

# Russell/Nomura Japan Equity Indexes

**NOMURA**

Nomura Securities Co Ltd, Tokyo  
Quantitative Research Center

## Performance summary—July 2010



**3 August 2010**

Japanese full report:

2 Aug

Analysts

Akihiro Tokuno  
Yumiko Hirano  
Nana Komiyama

+81-3-3274-0924  
idx\_mgr@frc.nomura.co.jp  
Quantitative Research Center  
Nomura Securities, Tokyo

**Please read the important disclosures and disclaimers on pp. 15-16. gl**

### Russell/Nomura Japan Equity Indexes performance summary: total returns (including dividends, as of end-July 2010)

Index	No. of stocks	Weight (%)	Index value	Returns (%) *				
				1 month	3 months	6 months	12 months	YTD
Total Market	1,485	100.00	267.21	0.98	-13.75	-4.61	-8.36	-5.14
Value	1,127	48.96	603.12	0.58	-14.66	-4.87	-11.10	-4.06
Growth	664	51.04	106.09	1.37	-12.88	-4.36	-5.47	-6.14
Large	346	86.10	260.74	1.35	-13.85	-5.23	-8.56	-5.82
Large Value	220	39.40	581.30	1.07	-14.90	-5.93	-11.76	-4.89
Large Growth	238	46.71	111.51	1.59	-12.95	-4.63	-5.70	-6.57
Top	60	49.72	214.59	2.03	-13.83	-6.41	-9.00	-6.90
Top Value	38	22.49	525.04	1.89	-14.61	-8.33	-12.90	-6.92
Top Growth	49	27.23	96.72	2.13	-13.19	-4.79	-5.91	-6.86
Mid	286	36.38	355.07	0.45	-13.88	-3.58	-7.88	-4.31
Mid Value	182	16.90	612.22	-0.01	-15.28	-2.61	-9.60	-2.09
Mid Growth	189	19.48	156.03	0.85	-12.62	-4.41	-5.25	-6.17
Mid-Small	1,425	50.28	341.05	-0.03	-13.68	-2.77	-7.63	-3.35
Mid-Small Value	1,089	26.47	619.97	-0.50	-14.70	-1.77	-9.10	-1.54
Mid-Small Growth	615	23.81	136.43	0.50	-12.52	-3.86	-4.85	-5.31
Small	1,139	13.90	307.87	-1.26	-13.17	-0.59	-6.91	-0.78
Small Value	907	9.56	599.36	-1.36	-13.66	-0.27	-8.22	-0.56
Small Growth	426	4.33	104.01	-1.03	-12.06	-1.32	-3.03	-1.27
Small Core	398	9.32	101.20	-1.41	-13.00	-1.09	-6.83	-1.20
Small Core Value	312	6.24	152.77	-1.46	-13.48	-1.21	-9.02	-1.33
Small Core Growth	176	3.08	36.71	-1.32	-12.01	-0.85	-1.39	-0.94
Micro	741	4.58	114.81	-0.93	-13.51	0.42	-7.07	0.08
Micro Value	595	3.33	150.41	-1.17	-14.00	1.53	-6.73	0.91
Micro Growth	250	1.25	44.92	-0.30	-12.18	-2.47	-7.12	-2.08
Prime	991	97.66	751.66	1.04	-13.76	-4.73	-8.46	-5.28
Prime Value	724	47.24	994.66	0.66	-14.67	-5.08	-11.32	-4.25
Prime Growth	507	50.43	532.52	1.39	-12.89	-4.40	-5.49	-6.21

Note: \*Returns are not annualized.

Source: Nomura

## What are the Russell/Nomura Japan Equity Indexes?

The Russell/Nomura Japan Equity Indexes are Japanese equity indexes developed jointly by US-based Russell Investments and the Quantitative Research Center, Nomura Securities Co., Ltd.

Russell/Nomura Japan Equity Indexes have the following characteristics:

- They represent the entire Japanese equity market in that component stocks are selected from among all listed stocks.
- They reflect the stocks that are actually available for investment, as stable shareholdings are excluded from market capitalization figures.
- There are subindexes for different sizes of company based on market capitalization.
- There are subindexes for growth and value stocks. Subindexes for growth and value stocks are based on P/B ratios adjusted for unrealized gains/losses on marketable securities and unrecognized retirement benefit obligations.
- The Prime Index consists of the top 1,000 stocks in the Total Market Index by market cap excluding stable shareholdings.
- Clear definitions mean that there is no arbitrariness in stock-selection methods.
- The composition of each index is reviewed once a year.

### About Russell Investments

Founded in 1936, Russell Investments is a global financial services firm that serves institutional investors, financial advisers, and individuals in more than 40 countries. Over the course of its history, Russell's innovations have come to define many of the practices that are standard in the investment world today and have earned the company a reputation for excellence and leadership.

Through a unique combination of wide-ranging and interlinked businesses, Russell delivers financial products, services, and advice. A pioneer, Russell began its strategic pension fund consulting business in 1969 and today is utilized by many well-known worldwide institutions for investment advice. The firm has US\$179bn in assets under management (as of 31 March 2010) in its mutual funds, retirement products, and institutional funds, and is recognized for its depth of research and quality of manager selection. Russell offers a comprehensive range of implementation services that help institutional clients maximize their assets. The Russell Indexes calculate over 50,000 benchmarks daily covering 65 countries and more than 10,000 securities.

Russell is headquartered in Tacoma, Washington, USA, with offices in Amsterdam, Auckland, Chicago, Johannesburg, London, Melbourne, New York, Paris, San Francisco, Seoul, Singapore, Sydney, Tokyo, and Toronto. For more information about how Russell helps to improve financial security for people, visit <http://www.russell.com>.

Russell/Nomura Japan Equity Indexes are protected by certain intellectual property rights of Nomura Securities Co., Ltd. and Russell Investments. Nomura Securities Co., Ltd. and Russell Investments do not guarantee the accuracy, completeness, reliability, or usefulness thereof and do not account for business activities and services that any index user and its affiliates undertake with the use of the Indexes.

## 1. Russell/Nomura Japan Equity Indexes performance summary: price returns (excluding dividends, as of end-July 2010)

Index	No. of stocks	Weight (%)	Index value	Returns (%) *				
				1 month	3 months	6 months	12 months	YTD
Total Market	1,485	100.00	190.43	0.98	-13.82	-5.54	-9.93	-6.07
Value	1,127	48.96	414.61	0.58	-14.69	-5.88	-12.61	-5.09
Growth	664	51.04	78.39	1.36	-12.96	-5.21	-7.10	-6.98
Large	346	86.10	185.71	1.35	-13.91	-6.14	-10.12	-6.73
Large Value	220	39.40	400.07	1.06	-14.92	-6.91	-13.24	-5.88
Large Growth	238	46.71	82.05	1.59	-13.04	-5.48	-7.34	-7.40
Top	60	49.72	151.23	2.03	-13.87	-7.39	-10.72	-7.87
Top Value	38	22.49	360.75	1.89	-14.61	-9.36	-14.41	-7.96
Top Growth	49	27.23	69.62	2.13	-13.27	-5.72	-7.77	-7.77
Mid	286	36.38	255.78	0.44	-13.95	-4.39	-9.26	-5.12
Mid Value	182	16.90	422.83	-0.03	-15.34	-3.52	-11.03	-3.01
Mid Growth	189	19.48	118.16	0.85	-12.71	-5.15	-6.57	-6.89
Mid-Small	1,425	50.28	244.67	-0.04	-13.76	-3.65	-9.07	-4.23
Mid-Small Value	1,089	26.47	426.88	-0.51	-14.77	-2.76	-10.61	-2.54
Mid-Small Growth	615	23.81	103.32	0.50	-12.61	-4.62	-6.20	-6.06
Small	1,139	13.90	218.33	-1.27	-13.26	-1.65	-8.52	-1.85
Small Value	907	9.56	409.83	-1.37	-13.74	-1.41	-9.88	-1.70
Small Growth	426	4.33	78.74	-1.04	-12.19	-2.20	-4.51	-2.17
Small Core	398	9.32	88.25	-1.42	-13.08	-2.11	-8.40	-2.23
Small Core Value	312	6.24	131.57	-1.46	-13.55	-2.31	-10.62	-2.43
Small Core Growth	176	3.08	32.98	-1.33	-12.13	-1.73	-2.92	-1.84
Micro	741	4.58	98.87	-0.95	-13.63	-0.71	-8.75	-1.05
Micro Value	595	3.33	127.81	-1.18	-14.11	0.31	-8.53	-0.32
Micro Growth	250	1.25	40.42	-0.33	-12.34	-3.35	-8.46	-2.96
Prime	991	97.66	641.61	1.03	-13.82	-5.65	-10.01	-6.20
Prime Value	724	47.24	835.42	0.65	-14.70	-6.08	-12.82	-5.26
Prime Growth	507	50.43	461.56	1.39	-12.98	-5.25	-7.12	-7.05

Note: \*Returns are not annualized.

Source: Nomura

## 2. Russell/Nomura Japan Equity Indexes performance summary: total returns (including dividends, as of end-July 2010)

Index	No. of stocks	Weight (%)	Index value	Returns (%) *				
				1 month	3 months	6 months	12 months	YTD
Total Market	1,485	100.00	267.21	0.98	-13.75	-4.61	-8.36	-5.14
Value	1,127	48.96	603.12	0.58	-14.66	-4.87	-11.10	-4.06
Growth	664	51.04	106.09	1.37	-12.88	-4.36	-5.47	-6.14
Large	346	86.10	260.74	1.35	-13.85	-5.23	-8.56	-5.82
Large Value	220	39.40	581.30	1.07	-14.90	-5.93	-11.76	-4.89
Large Growth	238	46.71	111.51	1.59	-12.95	-4.63	-5.70	-6.57
Top	60	49.72	214.59	2.03	-13.83	-6.41	-9.00	-6.90
Top Value	38	22.49	525.04	1.89	-14.61	-8.33	-12.90	-6.92
Top Growth	49	27.23	96.72	2.13	-13.19	-4.79	-5.91	-6.86
Mid	286	36.38	355.07	0.45	-13.88	-3.58	-7.88	-4.31
Mid Value	182	16.90	612.22	-0.01	-15.28	-2.61	-9.60	-2.09
Mid Growth	189	19.48	156.03	0.85	-12.62	-4.41	-5.25	-6.17
Mid-Small	1,425	50.28	341.05	-0.03	-13.68	-2.77	-7.63	-3.35
Mid-Small Value	1,089	26.47	619.97	-0.50	-14.70	-1.77	-9.10	-1.54
Mid-Small Growth	615	23.81	136.43	0.50	-12.52	-3.86	-4.85	-5.31
Small	1,139	13.90	307.87	-1.26	-13.17	-0.59	-6.91	-0.78
Small Value	907	9.56	599.36	-1.36	-13.66	-0.27	-8.22	-0.56
Small Growth	426	4.33	104.01	-1.03	-12.06	-1.32	-3.03	-1.27
Small Core	398	9.32	101.20	-1.41	-13.00	-1.09	-6.83	-1.20
Small Core Value	312	6.24	152.77	-1.46	-13.48	-1.21	-9.02	-1.33
Small Core Growth	176	3.08	36.71	-1.32	-12.01	-0.85	-1.39	-0.94
Micro	741	4.58	114.81	-0.93	-13.51	0.42	-7.07	0.08
Micro Value	595	3.33	150.41	-1.17	-14.00	1.53	-6.73	0.91
Micro Growth	250	1.25	44.92	-0.30	-12.18	-2.47	-7.12	-2.08
Prime	991	97.66	751.66	1.04	-13.76	-4.73	-8.46	-5.28
Prime Value	724	47.24	994.66	0.66	-14.67	-5.08	-11.32	-4.25
Prime Growth	507	50.43	532.52	1.39	-12.89	-4.40	-5.49	-6.21

Note: \*Returns are not annualized.

Source: Nomura

## 3. Russell/Nomura index data by industrial sector: number of stocks and weighting (as of end-July 2010)

	Index	Total Market		Value		Growth		Small		Prime	
		No. of stocks	Weight (%)	No. of stocks	Weight (%)	No. of stocks	Weight (%)	No. of stocks	Weight (%)	No. of stocks	Weight (%)
	Overall	1,485	100.00	1,127	100.00	664	100.00	1,139	100.00	991	100.00
1	Fishery, agriculture & forestry	5	0.10	4	0.10	4	0.10	5	0.72	4	0.10
2	Mining	5	0.25	5	0.17	2	0.33	3	0.16	4	0.25
3	Construction	72	1.89	65	2.88	17	0.95	62	5.00	44	1.81
4	Foods	67	3.12	54	2.02	34	4.18	51	4.53	41	3.06
5	Textiles & apparel	28	0.83	26	0.96	7	0.72	23	2.03	20	0.82
6	Pulp & paper	11	0.40	11	0.78	2	0.03	8	0.73	7	0.39
7	Chemicals	119	6.11	93	5.92	51	6.29	91	8.38	75	6.05
8	Pharmaceuticals	38	4.51	19	1.13	32	7.75	24	2.71	29	4.57
9	Oil & coal products	8	0.81	7	1.34	3	0.30	3	0.11	6	0.82
10	Rubber products	10	0.68	10	0.79	3	0.57	8	0.90	9	0.69
11	Glass & ceramics products	23	1.21	21	0.96	9	1.46	17	1.84	16	1.21
12	Iron & steel	31	2.26	25	1.23	10	3.25	23	2.29	22	2.28
13	Nonferrous metals	21	1.31	14	1.20	12	1.41	14	1.58	17	1.32
14	Metal products	22	0.72	18	0.95	5	0.49	17	1.18	17	0.71
15	Machinery	106	4.65	84	3.45	47	5.80	84	6.78	65	4.56
16	Electric appliances	152	15.89	104	10.12	84	21.43	109	9.21	107	16.06
17	Transportation equipment	59	8.72	49	7.74	27	9.66	41	4.29	45	8.85
18	Precision instruments	25	1.47	16	0.36	14	2.54	19	1.28	15	1.46
19	Other products	37	2.27	28	1.77	12	2.75	30	2.37	24	2.26
20	Electric power & gas	18	5.39	16	8.04	12	2.84	5	0.54	16	5.51
21	Land transportation	35	4.07	23	2.50	23	5.58	17	1.65	25	4.10
22	Marine transportation	8	0.60	6	1.17	3	0.05	5	0.33	7	0.61
23	Air transportation	1	0.28	0	0.00	1	0.55	0	0.00	1	0.29
24	Warehousing & harbor transportation services	15	0.24	14	0.46	3	0.03	13	0.82	7	0.21
25	Information & communication	88	6.18	48	5.78	56	6.56	72	5.96	55	6.18
26	Wholesale trade	101	4.71	92	7.06	26	2.45	89	6.31	50	4.54
27	Retail trade	133	3.87	83	4.14	78	3.61	114	8.28	80	3.70
28	Banks	90	8.94	87	17.98	4	0.27	63	8.82	80	9.11
29	Securities & commodity futures	22	1.46	18	2.48	8	0.47	18	1.63	14	1.46
30	Insurance	6	2.13	5	3.61	2	0.71	1	0.09	6	2.18
31	Other financing business	19	0.80	18	1.50	2	0.13	15	1.71	18	0.82
32	Real estate	37	2.00	23	0.67	20	3.28	30	2.37	23	1.98
33	Services	73	2.12	41	0.74	51	3.46	65	5.44	42	2.04

Source: Nomura

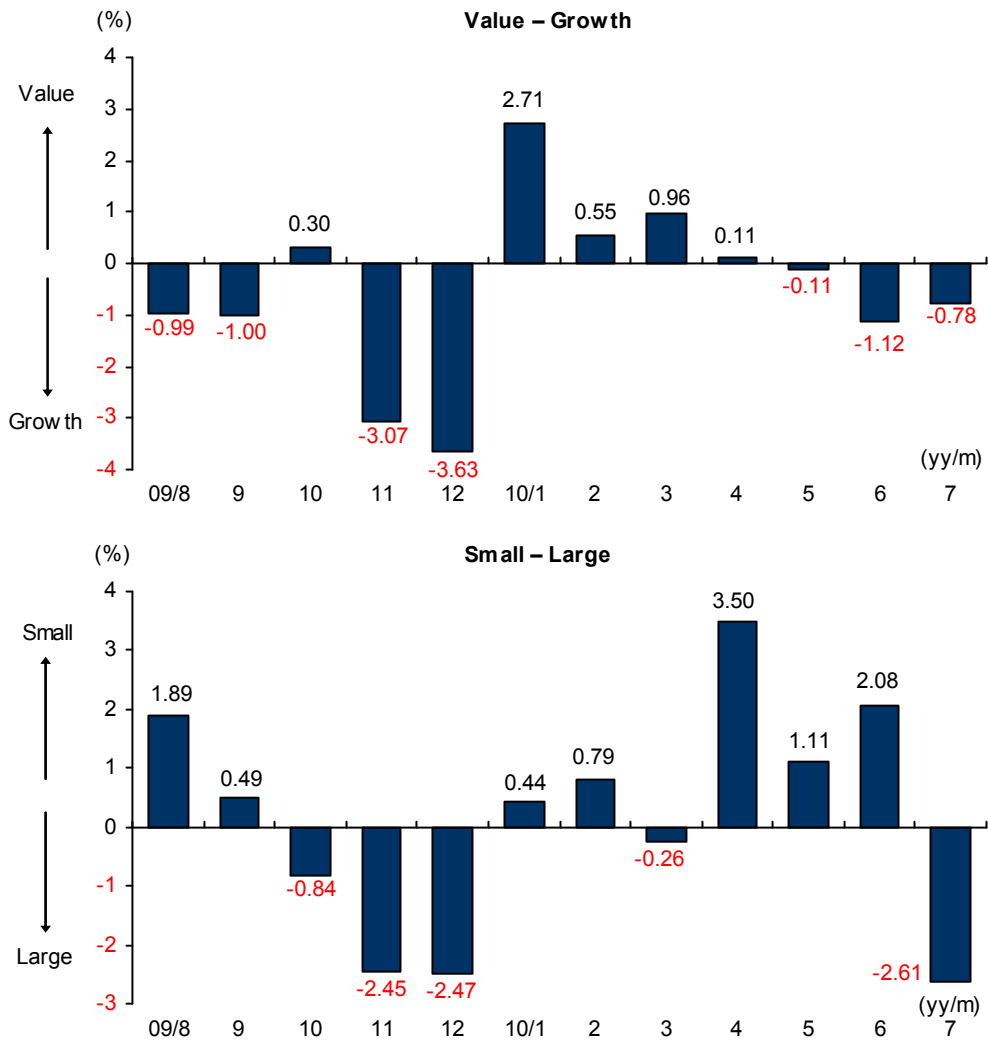
## 4. Russell/Nomura index performance by industrial sector: monthly returns\* (as of end-July 2010) (%)

	Index	Total Market		Value		Growth		Small		Prime	
		ex dividends	incl dividends	ex dividends	incl dividends	ex dividends	incl dividends	ex dividends	incl dividends	ex dividends	incl dividends
	Overall	0.98	0.98	0.58	0.58	1.36	1.37	-1.27	-1.26	1.03	1.04
1	Fishery, agriculture & forestry	0.75	0.74	1.40	1.38	0.18	0.18	0.75	0.74	0.84	0.83
2	Mining	-12.62	-12.62	-7.97	-7.97	-14.71	-14.71	-3.79	-3.79	-12.81	-12.81
3	Construction	0.22	0.40	1.02	1.26	-2.01	-2.01	-1.16	-1.16	0.22	0.41
4	Foods	0.12	0.13	0.67	0.68	-0.13	-0.13	-1.07	-1.06	0.14	0.15
5	Textiles & apparel	3.69	3.70	1.37	1.38	6.80	6.82	-1.21	-1.17	3.75	3.77
6	Pulp & paper	-3.82	-3.82	-3.81	-3.81	-4.18	-4.18	-1.99	-1.99	-4.03	-4.03
7	Chemicals	2.17	2.17	3.45	3.45	1.04	1.05	1.18	1.20	2.25	2.25
8	Pharmaceuticals	-0.33	-0.33	-1.56	-1.56	-0.16	-0.16	-4.30	-4.30	-0.29	-0.29
9	Oil & coal products	4.24	4.24	4.84	4.84	1.78	1.78	-5.89	-5.89	4.32	4.32
10	Rubber products	8.31	8.31	7.56	7.56	9.31	9.31	4.04	4.04	8.37	8.37
11	Glass & ceramics products	3.21	3.21	1.30	1.30	4.45	4.45	1.62	1.62	3.41	3.41
12	Iron & steel	0.24	0.24	2.95	2.95	-0.70	-0.70	2.21	2.21	0.20	0.20
13	Nonferrous metals	-0.29	-0.29	-2.02	-2.02	1.18	1.18	1.73	1.73	-0.17	-0.17
14	Metal products	2.67	2.67	2.42	2.42	3.15	3.15	0.26	0.26	2.90	2.90
15	Machinery	2.30	2.30	-0.90	-0.90	4.22	4.22	-3.29	-3.29	2.67	2.67
16	Electric appliances	5.03	5.03	5.09	5.09	5.01	5.01	0.10	0.10	5.13	5.13
17	Transportation equipment	1.22	1.22	0.47	0.47	1.81	1.80	-1.21	-1.21	1.22	1.22
18	Precision instruments	3.61	3.61	-2.95	-2.95	4.57	4.57	-0.85	-0.85	3.75	3.75
19	Other products	-4.43	-4.42	0.61	0.61	-7.29	-7.27	-0.66	-0.56	-4.54	-4.53
20	Electric power & gas	-2.23	-2.23	-2.41	-2.41	-1.72	-1.72	-2.56	-2.56	-2.23	-2.23
21	Land transportation	-2.27	-2.27	-3.76	-3.76	-1.62	-1.62	-1.16	-1.16	-2.30	-2.30
22	Marine transportation	3.86	3.86	4.09	4.09	-0.65	-0.65	-1.40	-1.40	3.90	3.90
23	Air transportation	3.53	3.53	-	-	3.53	3.53	-	-	3.53	3.53
24	Warehousing & harbor transportation services	-1.72	-1.72	-1.99	-1.99	2.17	2.17	-2.75	-2.75	-1.92	-1.92
25	Information & communication	0.03	0.04	-1.51	-1.51	1.38	1.38	-3.49	-3.49	0.05	0.05
26	Wholesale trade	0.68	0.69	0.54	0.55	1.09	1.09	-0.07	-0.02	0.83	0.84
27	Retail trade	-1.86	-1.86	-2.01	-2.01	-1.70	-1.69	-2.42	-2.42	-2.01	-2.01
28	Banks	0.64	0.64	0.70	0.70	-3.39	-3.39	-3.49	-3.49	0.65	0.65
29	Securities & commodity futures	-1.56	-1.56	-1.51	-1.51	-1.83	-1.83	-3.77	-3.77	-1.62	-1.62
30	Insurance	-0.35	-0.35	-0.65	-0.65	1.13	1.13	4.42	4.42	-0.35	-0.35
31	Other financing business	6.45	6.45	5.89	5.89	13.33	13.33	5.53	5.53	6.47	6.47
32	Real estate	-0.33	-0.32	-1.25	-1.22	-0.15	-0.14	-3.12	-3.05	-0.31	-0.31
33	Services	-1.83	-1.82	-4.35	-4.35	-1.29	-1.29	-1.69	-1.69	-1.87	-1.87

Note: \*Returns are not annualized.

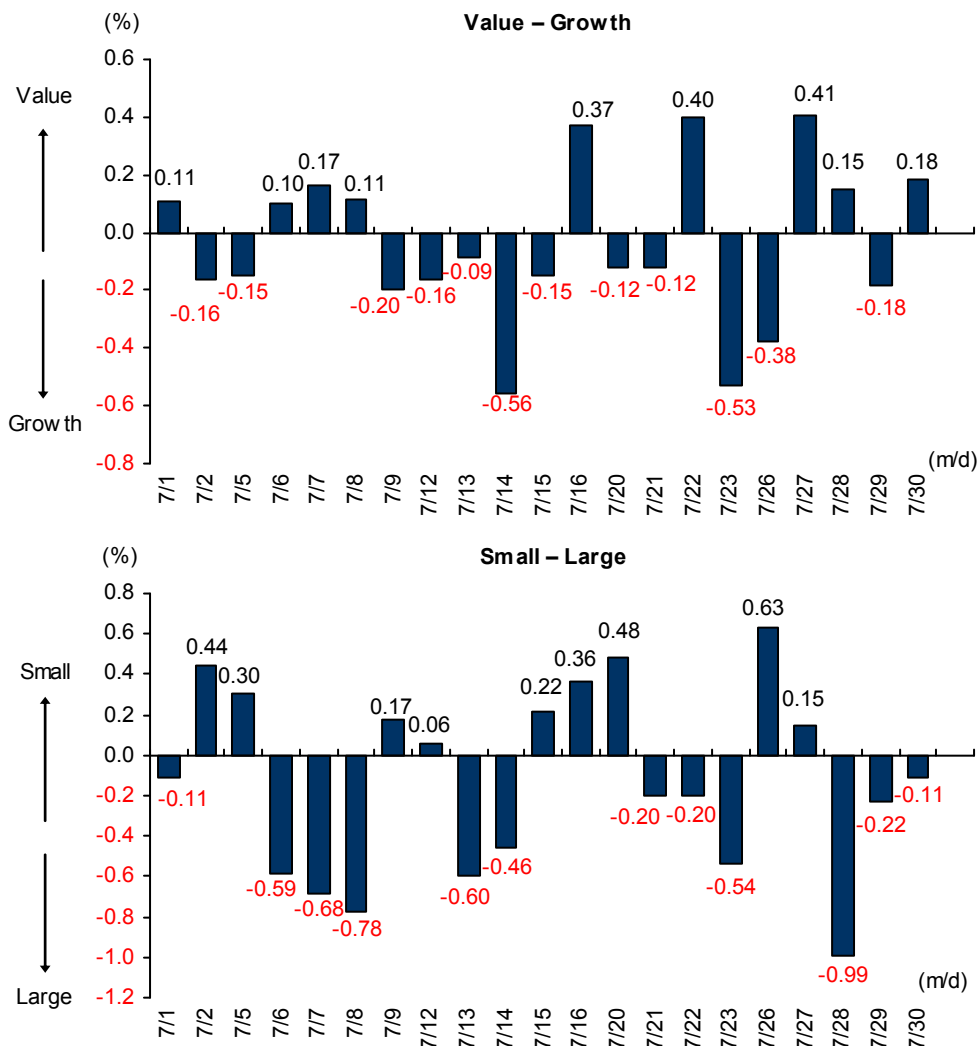
Source: Nomura

5. Monthly performance: style—total returns



Note: Value - Growth is the difference between Value and Growth returns. Small - Large is the difference between Small and Large returns. Returns are not annualized.  
Source: Nomura

6. Daily performance: style—total returns



Note: Value - Growth is the difference between Value and Growth returns. Small - Large is the difference between Small and Large returns. Returns are not annualized.  
Source: Nomura



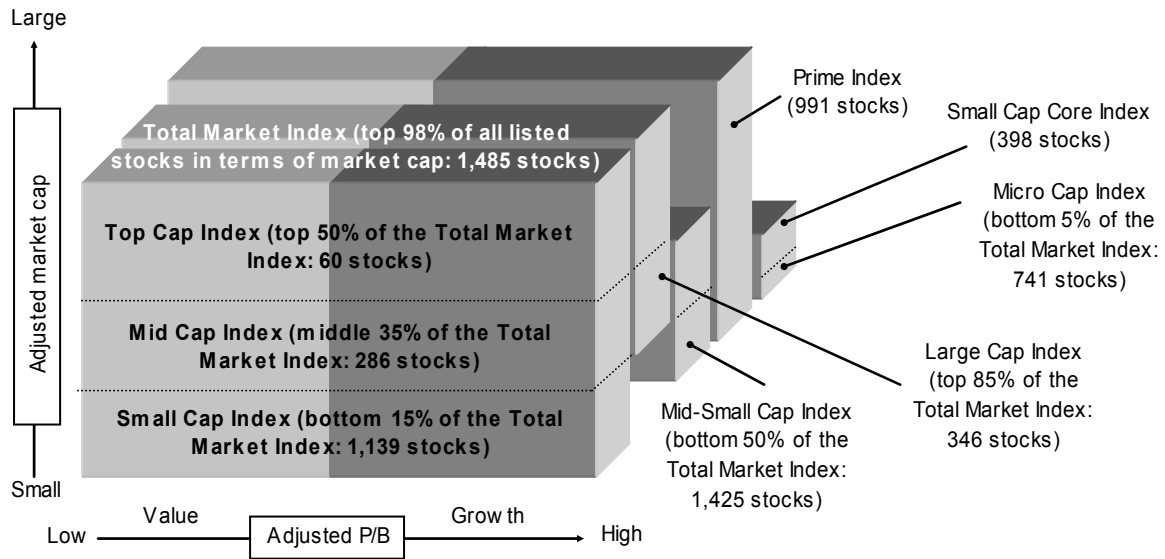
## 7. Russell/Nomura Japan Equity Indexes: key indicators (as of end-July 2010)

Index	P/E x	P/B x	Dividend yield %	ROE %	Rec profit growth %
Total Market	15.85	1.03	2.15	6.62	47.08
Value	15.74	0.80	2.28	5.18	47.24
Growth	15.96	1.40	2.03	9.09	46.93
Large	15.72	1.08	2.17	7.02	48.12
Large Value	15.38	0.85	2.31	5.60	47.37
Large Growth	16.02	1.40	2.06	9.02	48.81
Top	14.66	1.07	2.48	7.49	48.92
Top Value	13.90	0.85	2.60	6.28	43.31
Top Growth	15.36	1.35	2.38	9.08	54.59
Mid	17.45	1.09	1.76	6.37	46.94
Mid Value	17.93	0.83	1.94	4.73	54.00
Mid Growth	17.05	1.47	1.60	8.92	41.15
Mid-Small	17.24	0.99	1.82	5.84	45.19
Mid-Small Value	17.74	0.76	2.01	4.35	51.18
Mid-Small Growth	16.72	1.47	1.62	9.09	38.85
Small	16.71	0.79	1.99	4.83	41.07
Small Value	17.41	0.66	2.13	3.83	46.67
Small Growth	15.36	1.46	1.69	9.88	29.98
Small Core	18.10	0.83	1.97	4.68	28.54
Small Core Value	20.10	0.69	2.08	3.48	26.90
Small Core Growth	15.07	1.44	1.74	9.90	31.75
Micro	14.45	0.72	2.04	5.09	69.78
Micro Value	13.92	0.60	2.21	4.40	91.31
Micro Growth	16.10	1.52	1.58	9.82	25.81
Prime	15.92	1.04	2.15	6.67	47.51
Prime Value	15.87	0.81	2.27	5.20	47.57
Prime Growth	15.97	1.40	2.03	9.07	47.45

Note: All financial data are based on current-FY forecasts (with preference given to consolidated figures).

Source: Nomura

8. Russell/Nomura Japan Equity Indexes



Note: No. of stocks in each index is as of 30 July 2010.  
 Source: Nomura

All the indexes (Total Market, the capitalization indexes, Value, Growth, and Prime) also have indexes based on the 33 industrial sectors. Divisions based on market cap exclude the value of stable shareholdings. Value and Growth indexes are defined in terms of P/B ratios adjusted for unrealized gains/losses.

For composition rules and other information please refer to *Russell/Nomura Japan Equity Indexes*.

**9. Russell/Nomura Japan Equity Indexes performance summary: price returns (excluding dividends), US dollar basis (as of end-July 2010)**

Index	No. of stocks	Weight (%)	Index value	Returns (%) *				
				1 month	3 months	6 months	12 months	YTD
Total Market	1,485	100.00	528.96	3.66	-6.02	-1.35	-0.29	0.20
Value	1,127	48.96	1,151.67	3.25	-6.97	-1.71	-3.26	1.25
Growth	664	51.04	217.76	4.06	-5.09	-1.01	2.84	-0.77
Large	346	86.10	515.86	4.04	-6.12	-1.98	-0.50	-0.50
Large Value	220	39.40	1,111.30	3.74	-7.22	-2.79	-3.95	0.40
Large Growth	238	46.71	227.91	4.29	-5.17	-1.30	2.57	-1.22
Top	60	49.72	420.07	4.74	-6.08	-3.28	-1.16	-1.72
Top Value	38	22.49	1,002.06	4.60	-6.88	-5.34	-5.26	-1.82
Top Growth	49	27.23	193.38	4.85	-5.42	-1.54	2.10	-1.61
Mid	286	36.38	710.49	3.11	-6.17	-0.16	0.45	1.21
Mid Value	182	16.90	1,174.52	2.63	-7.68	0.76	-1.51	3.46
Mid Growth	189	19.48	328.22	3.53	-4.81	-0.95	3.42	-0.67
Mid-Small	1,425	50.28	679.62	2.62	-5.96	0.62	0.66	2.16
Mid-Small Value	1,089	26.47	1,185.77	2.13	-7.06	1.54	-1.05	3.96
Mid-Small Growth	615	23.81	286.99	3.17	-4.71	-0.40	3.83	0.21
Small	1,139	13.90	606.47	1.36	-5.41	2.70	1.26	4.71
Small Value	907	9.56	1,138.41	1.25	-5.94	2.96	-0.24	4.86
Small Growth	426	4.33	218.73	1.58	-4.24	2.13	5.70	4.37
Small Core	398	9.32	104.30	1.20	-5.22	2.22	1.40	4.29
Small Core Value	312	6.24	155.50	1.16	-5.72	2.02	-1.06	4.08
Small Core Growth	176	3.08	38.98	1.29	-4.18	2.62	7.47	4.71
Micro	741	4.58	116.86	1.68	-5.82	3.68	1.01	5.55
Micro Value	595	3.33	151.06	1.44	-6.34	4.75	1.26	6.33
Micro Growth	250	1.25	47.77	2.31	-4.41	0.93	1.33	3.51
Prime	991	97.66	861.59	3.72	-6.02	-1.48	-0.39	0.06
Prime Value	724	47.24	1,121.84	3.33	-6.98	-1.92	-3.49	1.06
Prime Growth	507	50.43	619.80	4.08	-5.10	-1.05	2.81	-0.84

Note: \*Returns are not annualized.

Source: Nomura

**10. Russell/Nomura Japan Equity Indexes performance summary: total returns (including dividends), US dollar basis (as of end-July 2010)**

Index	No. of stocks	Weight (%)	Index value	Returns (%) *				
				1 month	3 months	6 months	12 months	YTD
Total Market	1,485	100.00	742.23	3.67	-5.95	-0.38	1.44	1.19
Value	1,127	48.96	1,675.30	3.26	-6.94	-0.65	-1.59	2.34
Growth	664	51.04	294.68	4.06	-4.99	-0.12	4.65	0.12
Large	346	86.10	724.27	4.05	-6.06	-1.03	1.23	0.47
Large Value	220	39.40	1,614.71	3.75	-7.20	-1.77	-2.32	1.46
Large Growth	238	46.71	309.74	4.29	-5.08	-0.41	4.39	-0.34
Top	60	49.72	596.08	4.74	-6.03	-2.26	0.73	-0.68
Top Value	38	22.49	1,458.41	4.60	-6.89	-4.27	-3.58	-0.70
Top Growth	49	27.23	268.66	4.85	-5.33	-0.57	4.15	-0.64
Mid	286	36.38	986.29	3.12	-6.09	0.69	1.97	2.08
Mid Value	182	16.90	1,700.60	2.65	-7.62	1.71	0.07	4.45
Mid Growth	189	19.48	433.41	3.53	-4.72	-0.18	4.89	0.10
Mid-Small	1,425	50.28	947.35	2.63	-5.87	1.54	2.25	3.10
Mid-Small Value	1,089	26.47	1,722.13	2.14	-6.99	2.58	0.62	5.03
Mid-Small Growth	615	23.81	378.96	3.17	-4.60	0.40	5.33	1.01
Small	1,139	13.90	855.20	1.37	-5.31	3.81	3.05	5.85
Small Value	907	9.56	1,664.87	1.26	-5.85	4.15	1.60	6.08
Small Growth	426	4.33	288.92	1.60	-4.10	3.05	7.34	5.32
Small Core	398	9.32	119.60	1.21	-5.13	3.30	3.14	5.40
Small Core Value	312	6.24	180.56	1.16	-5.65	3.16	0.71	5.25
Small Core Growth	176	3.08	43.39	1.30	-4.05	3.54	9.16	5.67
Micro	741	4.58	135.70	1.70	-5.69	4.86	2.87	6.76
Micro Value	595	3.33	177.77	1.46	-6.22	6.03	3.24	7.64
Micro Growth	250	1.25	53.09	2.34	-4.24	1.84	2.82	4.46
Prime	991	97.66	1,009.37	3.72	-5.95	-0.51	1.34	1.04
Prime Value	724	47.24	1,335.68	3.33	-6.95	-0.88	-1.84	2.15
Prime Growth	507	50.43	715.09	4.08	-5.01	-0.17	4.62	0.05

Note: \*Returns are not annualized.

Source: Nomura

## Data publication services

Data for the Russell/Nomura Japan Equity Indexes can be obtained via the following channels.

**Index values are published in the following media:**

- Bloomberg (RNJI)
- Jiji (SQ21, SQ22, SQ23, SQ24)
- QUICK (NRIJ500–503, 510–517)
- Reuters (FRCNRI01, FRCNRI02, FRCNRI03, FRCNRI04)
- Our website (<http://qr.nomura.co.jp/jp/frcnri/index.html>)

**Daily index values for the Russell/Nomura Prime Index are published in the following media:**

- Bloomberg (RNPJ <INDEX>)
- Jiji (RT14 or RNPJ/2)
- QUICK (140)
- Reuters (.JRN)
- Our website (<http://qr.nomura.co.jp/jp/frcnri/index.html>)

**Daily index values for the Russell/Nomura Small Cap Core Index are published in the following media:**

- Bloomberg (RNSCC <INDEX>)
- Jiji (RT14 or RNSCC/NOMURA)
- QUICK (130)
- Reuters (.JRNSC)

### More detailed data

More detailed data on index values and individual stock information can be obtained through Nomura Research Institute services Aurora, e-Aurora, and IDS.

For information, contact:

Nomura Research Institute  
Investment Information Systems Business Department  
+81-3-5533-3870  
e-mail: [ids-sales@nri.co.jp](mailto:ids-sales@nri.co.jp)

### Rule book:

Russell/Nomura Japan equity index rule book

While every effort is made to ensure that the information used in this report and all published information is based on reliable data, it should be noted that at times, data may have changed or been amended.

# NOMURA

## Online availability of research and additional conflict-of-interest disclosures

Nomura Japanese Equity Research is available electronically for clients in the US on NOMURA.COM, REUTERS, BLOOMBERG and THOMSON ONE ANALYTICS. For clients in Europe, Japan and elsewhere in Asia it is available on NOMURA.COM, REUTERS and BLOOMBERG. Important disclosures may be accessed through the left hand side of the Nomura Disclosure web page <http://www.nomura.com/research> or requested from Nomura Securities International, Inc., on 1-877-865-5752. If you have any difficulties with the website, please email [grpsupport-eu@nomura.com](mailto:grpsupport-eu@nomura.com) for technical assistance.

The analysts responsible for preparing this report have received compensation based upon various factors including the firm's total revenues, a portion of which is generated by Investment Banking activities.

## Nomura business relationships:

The RUSSELL/NOMURA Total Market Index, a benchmark of the Japanese Stock Market, and related RUSSELL/NOMURA Japan Equity indexes are produced by Nomura Securities Financial Research Center (a division of Nomura Securities Co, Ltd.) and the Frank Russell Company.

## DISCLAIMERS

This publication contains material that has been prepared by the Nomura entity identified on the banner at the top or the bottom of page 1 herein and, if applicable, with the contributions of one or more Nomura entities whose employees and their respective affiliations are specified on page 1 herein or elsewhere identified in the publication. Affiliates and subsidiaries of Nomura Holdings, Inc. (collectively, the 'Nomura Group'), include: Nomura Securities Co., Ltd. ('NSC') Tokyo, Japan; Nomura International plc, United Kingdom; Nomura Securities International, Inc. ('NSI'), New York, NY; Nomura International (Hong Kong) Ltd., Hong Kong; Nomura Financial Investment (Korea) Co., Ltd., Korea; Nomura Singapore Ltd., Singapore (Registration number 197201440E, regulated by the Monetary Authority of Singapore); Nomura Australia Ltd., Australia (ABN 48 003 032 513), regulated by the Australian Securities and Investment Commission and holder of an Australian financial services licence number 246412; P.T. Nomura Indonesia, Indonesia; Nomura Securities Malaysia Sdn. Bhd., Malaysia; Nomura International (Hong Kong) Ltd., Taipei Branch, Taiwan; Nomura Financial Advisory and Securities (India) Private Limited, Mumbai, India (Registered Address: Ceejay House, Level 11, Plot F, Shivsagar Estate, Dr. Annie Besant Road, Worli, Mumbai- 400 018, India; SEBI Registration No: BSE INB011299030, NSE INB231299034, INF231299034, INE 231299034).

This material is: (i) for your private information, and we are not soliciting any action based upon it; (ii) not to be construed as an offer to sell or a solicitation of an offer to buy any security in any jurisdiction where such offer or solicitation would be illegal; and (iii) based upon information that we consider reliable. NOMURA GROUP DOES NOT WARRANT OR REPRESENT THAT THE PUBLICATION IS ACCURATE, COMPLETE, RELIABLE, FIT FOR ANY PARTICULAR PURPOSE OR MERCHANTABLE AND DOES NOT ACCEPT LIABILITY FOR ANY ACT (OR DECISION NOT TO ACT) RESULTING FROM USE OF THIS PUBLICATION AND RELATED DATA. TO THE MAXIMUM EXTENT PERMISSIBLE ALL WARRANTIES AND OTHER ASSURANCES BY NOMURA GROUP ARE HEREBY EXCLUDED AND NOMURA GROUP SHALL HAVE NO LIABILITY FOR THE USE, MISUSE, OR DISTRIBUTION OF THIS INFORMATION.

Opinions expressed are current opinions as of the original publication date appearing on this material only and the information, including the opinions contained herein, are subject to change without notice. Nomura is under no duty to update this publication. If and as applicable, NSI's investment banking relationships, investment banking and non-investment banking compensation and securities ownership (identified in this report as 'Disclosures Required in the United States'), if any, are specified in disclaimers and related disclosures in this report. In addition, other members of the Nomura Group may from time to time perform investment banking or other services (including acting as advisor, manager or lender) for, or solicit investment banking or other business from, companies mentioned herein. Further, the Nomura Group, and/or its officers, directors and employees, including persons, without limitation, involved in the preparation or issuance of this material may, to the extent permitted by applicable law and/or regulation, have long or short positions in, and buy or sell, the securities (including ownership by NSI, referenced above), or derivatives (including options) thereof, of companies mentioned herein, or related securities or derivatives. In addition, the Nomura Group, excluding NSI, may act as a market maker and principal, willing to buy and sell certain of the securities of companies mentioned herein. Further, the Nomura Group may buy and sell certain of the securities of companies mentioned herein, as agent for its clients.

Investors should consider this report as only a single factor in making their investment decision and, as such, the report should not be viewed as identifying or suggesting all risks, direct or indirect, that may be associated with any investment decision. Please see the further disclaimers in the disclosure information on companies covered by Nomura analysts available at [www.nomura.com/research](http://www.nomura.com/research) under the 'Disclosure' tab. Nomura Group produces a number of different types of research product including, amongst others, fundamental analysis, quantitative analysis and short term trading ideas; recommendations contained in one type of research product may differ from recommendations contained in other types of research product, whether as a result of differing time horizons, methodologies or otherwise; it is possible that individual employees of Nomura may have different perspectives to this publication.

NSC and other non-US members of the Nomura Group (ie excluding NSI), their officers, directors and employees may, to the extent it relates to non-US issuers and is permitted by applicable law, have acted upon or used this material prior to, or immediately following, its publication.

Foreign currency-denominated securities are subject to fluctuations in exchange rates that could have an adverse effect on the value or price of, or income derived from, the investment. In addition, investors in securities such as ADRs, the values of which are influenced by foreign currencies, effectively assume currency risk.

The securities described herein may not have been registered under the US Securities Act of 1933, and, in such case, may not be offered or sold in the United States or to US persons unless they have been registered under such Act, or except in compliance with an exemption from the registration requirements of such Act. Unless governing law permits otherwise, you must contact a Nomura entity in your home jurisdiction if you want to use our services in effecting a transaction in the securities mentioned in this material.

This publication has been approved for distribution in the United Kingdom and European Union as investment research by Nomura International plc ('NIPlc'), which is authorised and regulated by the UK Financial Services Authority ('FSA') and is a member of the London Stock Exchange. It does not constitute a personal recommendation, as defined by the FSA, or take into account the particular investment objectives, financial situations, or needs of individual investors. It is intended only for investors who are 'eligible counterparties' or 'professional clients' as defined by the FSA, and may not, therefore, be redistributed to retail clients as defined by the FSA. This publication may be distributed in Germany via Nomura Bank (Deutschland) GmbH, which is authorised and regulated in Germany by the Federal Financial Supervisory Authority ('BaFin'). This publication has been approved by Nomura International (Hong Kong) Ltd. ('NIHK'), which is regulated by the Hong Kong Securities and Futures Commission, for distribution in Hong Kong by NIHK. This publication has been approved for distribution in Australia by Nomura Australia Ltd, which is authorised and regulated in Australia by the Australian Securities and Investment Commission ('ASIC'). This publication has also been approved for distribution in Malaysia by Nomura Securities Malaysia Sdn Bhd. In Singapore, this publication has been distributed by Nomura Singapore Limited ('NSL'). NSL accepts legal responsibility for the content of this publication, where it concerns securities, futures and foreign exchange, issued by its foreign affiliate in respect of recipients who are not accredited, expert or institutional investors as defined by the Securities and Futures Act (Chapter 289).

Recipients of this publication may contact NSL in respect of matters arising from, or in connection with, this publication. NSI accepts responsibility for the contents of this material when distributed in the United States.

No part of this material may be (i) copied, photocopied, or duplicated in any form, by any means, or (ii) redistributed without the prior written consent of the Nomura Group member identified in the banner on page 1 of this report. Further information on any of the securities mentioned herein may be obtained upon request. If this publication has been distributed by electronic transmission, such as e-mail, then such transmission cannot be guaranteed to be secure or error-free as information could be intercepted, corrupted, lost, destroyed, arrive late or incomplete, or contain viruses. The sender therefore does not accept liability for any errors or omissions in the contents of this publication, which may arise as a result of electronic transmission. If verification is required, please request a hard-copy version.

This publication has not been approved for distribution in the Kingdom of Saudi Arabia or to clients other than 'professional clients' in the United Arab Emirates by Nomura Saudi Arabia, Nomura International plc or any other member of the Nomura Group, as the case may be. Neither this publication nor any copy thereof may be taken or transmitted or distributed, directly or indirectly, by any person other than those authorised to do so into the Kingdom of Saudi Arabia or in the United Arab Emirates or to any person located in the Kingdom of Saudi Arabia or to clients other than 'professional clients' in the United Arab Emirates. By accepting to receive this publication, you represent that you are not located in the Kingdom of Saudi Arabia or that you are a 'professional client' in the United Arab Emirates and agree to comply with these restrictions. Any failure to comply with these restrictions may constitute a violation of the laws of the Kingdom of Saudi Arabia or the United Arab Emirates.

## Disclaimers required in Japan

Investors in the financial products offered by Nomura Securities may incur fees and commissions specific to those products (for example, transactions involving Japanese equities are subject to a sales commission of up to 1.365% (tax included) of the transaction amount or a commission of ¥2,730 (tax included) for transactions of ¥200,000 or less, while transactions involving investment trusts are subject to various fees, such as sales commissions and trust fees, specific to each investment trust). In addition, all products carry the risk of losses owing to price fluctuations or other factors. Fees and risks vary by product. Please thoroughly read the written materials provided, such as documents delivered before making a contract, listed securities documents, or prospectuses.

Transactions involving Japanese equities (including Japanese REITs and Japanese ETFs) are subject to a sales commission of up to 1.365% (tax included) of the transaction amount (or a commission of ¥2,730 (tax included) for transactions of ¥200,000 or less). When Japanese equities are purchased via OTC transactions (including offerings), only the purchase price shall be paid, with no sales commission charged. However, Nomura Securities may charge a separate fee for OTC transactions, as agreed with the customer. Japanese equities carry the risk of losses owing to price fluctuations. Japanese REITs carry the risk of losses owing to fluctuations in price and/or earnings of underlying real estate. Japanese ETFs carry the risk of losses owing to fluctuations in the underlying equity indexes or other benchmarks.

Transactions involving foreign equities are subject to a domestic sales commission of up to 0.9975% (tax included) of the transaction amount (which equals the local transaction amount plus local fees and taxes in the case of a purchase or the local transaction amount minus local fees and taxes in the case of a sale) (for transaction amounts of ¥750,000 and below, maximum domestic sales commission is ¥7,455 tax included). Local fees and taxes in foreign financial instruments markets vary by country/territory. When foreign equities are purchased via OTC transactions (including offerings), only the purchase price shall be paid, with no sales commission charged. However, Nomura Securities may charge a separate fee for OTC transactions, as agreed with the customer. Foreign equities carry the risk of losses owing to factors such as price fluctuations and foreign exchange rate fluctuations.

Transactions involving convertible bonds are subject to a sales commission of up to 1.05% (tax included) of the transaction amount (or a commission of ¥4,200 (tax included) if this would be less than ¥4,200). When convertible bonds are purchased via OTC transactions (including offerings), only the purchase price shall be paid, with no sales commission charged. However, Nomura Securities may charge a separate fee for OTC transactions, as agreed with the customer. Convertible bonds carry the risk of losses owing to factors such as interest rate fluctuations and price fluctuations in the underlying stock. In addition, convertible bonds denominated in foreign currencies also carry the risk of losses owing to factors such as foreign exchange rate fluctuations.

When bonds are purchased via public offerings, secondary distributions, or other OTC transactions with Nomura Securities, only the purchase price shall be paid, with no sales commission charged. Bonds carry the risk of losses, as prices fluctuate in line with changes in market interest rates. In addition, foreign currency-denominated bonds also carry the risk of losses owing to factors such as foreign exchange rate fluctuations.

When Japanese government bonds (JGBs) for individual investors are purchased via public offerings, only the purchase price shall be paid, with no sales commission charged. When JGBs for individual investors are sold before maturity, an amount calculated via the following formula will be subtracted from the par value of the bond plus accrued interest: for 10-year variable rate bonds, an amount equal to the two preceding coupon payments (before tax) x 0.8; for 5-year fixed rate bonds, an amount equal to the four preceding coupon payments (before tax) x 0.8.

Purchases of investment trusts (and sales of some investment trusts) are subject to a fee of up to 5.25% (tax included) of the transaction amount. Also, a direct cost that may be incurred when selling investment trusts is a fee of up to 2.0% of the unit price at the time of redemption. Indirect costs that may be incurred during the course of holding investment trusts include, for domestic investment trusts, a trust fee of up to 5.25% (tax included, annualized basis) of the net assets in trust, as well as fees based on investment performance. Other indirect costs may also be incurred. For foreign investment trusts, indirect fees may be incurred during the course of holding such as investment company compensation.

Investment trusts invest mainly in securities such as Japanese and foreign equities and bonds, whose prices fluctuate. Investment trust unit prices fluctuate owing to price fluctuations in the underlying assets and to foreign exchange rate fluctuations. As such, investment trusts carry the risk of losses. Fees and risks vary by investment trust. Maximum applicable fees are subject to change; please thoroughly read the written materials provided, such as prospectuses or documents delivered before making a contract.

An annual account maintenance fee of up to ¥1,575 (tax included) is charged for any account held with Nomura Securities containing equities or investment securities. An additional annual account maintenance fee of up to ¥3,150 (tax included) is charged for any account containing foreign securities.

No account fee will be charged for other marketable securities or monies deposited.

Transfers of equities to another securities company via the Japan Securities Depository Center are subject to a transfer fee of up to ¥10,500 (tax included) per issue transferred depending on volume.

Margin transactions are subject to a sales commission of up to 1.365% (tax included) of the transaction amount (or a commission of ¥2,730 (tax included) for transactions of ¥200,000 or less), as well as management fees and rights handling fees. In addition, long margin transactions are subject to interest on the purchase amount, while short margin transactions are subject to fees for the lending of the shares borrowed. A margin equal to at least 30% of the transaction amount and at least ¥300,000 is required. With margin transactions, an amount up to roughly 3.3x the margin may be traded. Margin transactions therefore carry the risk of losses in excess of the margin owing to share price fluctuations. For details, please thoroughly read the written materials provided, such as listed securities documents or documents delivered before making a contract.

## Nomura Securities Co., Ltd.

Financial instruments firm registered with the Kanto Local Finance Bureau (registration No. 142)

Member associations: Japan Securities Dealers Association; Japan Securities Investment Advisers Association; and The Financial Futures Association of Japan.

## Additional information available upon request

NIPIC and other Nomura Group entities manage conflicts identified through the following: their Chinese Wall, confidentiality and independence policies, maintenance of a Stop List and a Watch List, personal account dealing rules, policies and procedures for managing conflicts of interest arising from the allocation and pricing of securities and impartial investment research and disclosure to clients via client documentation.

Disclosure information is available at the Nomura Disclosure web page:

<http://www.nomura.com/research/pages/disclosures/disclosures.aspx>