

Russell/Nomura Japan Equity Indexes

NOMURA

Nomura Securities Co Ltd, Tokyo
Quantitative Research Center

Performance summary—November 2010

2 December 2010

Japanese full report:

1 Dec

Analysts

Akihiro Tokuno

Yumiko Hirano

Nana Komiyama

+81-3-3274-0924

idx_mgr@frc.nomura.co.jp

Quantitative Research Center

Nomura Securities, Tokyo

Please read the important disclosures and disclaimers on pp. 14-15.gl



Russell/Nomura Japan Equity Indexes performance summary: total returns (including dividends, as of end-November 2010)

Index	No. of stocks	Weight (%)	Index value	Returns (%) *				
				1 month	3 months	6 months	12 months	YTD
Total Market	1,482	100.00	273.50	6.04	7.97	-1.02	5.10	-2.91
Value	1,123	48.41	612.48	5.92	7.23	-2.76	3.65	-2.57
Growth	665	51.59	109.40	6.14	8.66	0.67	6.49	-3.21
Large	346	86.65	268.41	5.95	8.51	-0.39	5.29	-3.05
Large Value	219	39.22	594.35	5.68	7.74	-2.27	3.50	-2.75
Large Growth	239	47.43	115.44	6.18	9.15	1.22	6.79	-3.28
Top	61	50.77	223.33	6.12	8.75	0.77	5.65	-3.11
Top Value	38	22.54	540.38	6.16	7.31	-1.57	1.53	-4.20
Top Growth	50	28.23	101.56	6.10	9.93	2.72	9.15	-2.19
Mid	285	35.88	360.03	5.71	8.16	-1.98	4.77	-2.97
Mid Value	181	16.68	620.43	5.04	8.31	-3.22	6.20	-0.77
Mid Growth	189	19.20	158.29	6.29	8.04	-0.87	3.56	-4.81
Mid-Small	1,421	49.23	343.28	5.94	7.17	-2.79	4.55	-2.72
Mid-Small Value	1,085	25.87	622.39	5.72	7.16	-3.79	5.51	-1.16
Mid-Small Growth	615	23.36	137.72	6.20	7.18	-1.67	3.48	-4.41
Small	1,136	13.35	303.87	6.58	4.57	-4.93	3.93	-2.07
Small Value	904	9.19	591.62	6.96	5.15	-4.80	4.29	-1.84
Small Growth	426	4.16	102.64	5.75	3.32	-5.20	3.10	-2.57
Small Core	397	9.01	100.37	6.14	4.92	-4.43	4.19	-2.00
Small Core Value	311	6.02	151.35	6.47	5.51	-4.32	3.93	-2.25
Small Core Growth	176	2.98	36.50	5.46	3.76	-4.65	4.70	-1.51
Micro	739	4.34	112.18	7.50	3.87	-5.94	3.39	-2.21
Micro Value	593	3.17	147.45	7.89	4.48	-5.71	4.98	-1.08
Micro Growth	250	1.17	43.51	6.47	2.24	-6.56	-0.72	-5.17
Prime	990	97.80	770.27	6.00	8.07	-0.88	5.14	-2.93
Prime Value	722	46.77	1,011.31	5.85	7.33	-2.64	3.60	-2.64
Prime Growth	508	51.02	549.68	6.14	8.75	0.79	6.58	-3.19

Note: *Returns are not annualized.

Source: Nomura

What are the Russell/Nomura Japan Equity Indexes?

The Russell/Nomura Japan Equity Indexes are Japanese equity indexes developed jointly by US-based Russell Investments and the Quantitative Research Center, Nomura Securities Co., Ltd.

Russell/Nomura Japan Equity Indexes have the following characteristics:

- They represent the entire Japanese equity market in that component stocks are selected from among all listed stocks.
- They reflect the stocks that are actually available for investment, as stable shareholdings are excluded from market capitalization figures.
- There are sub-indexes for different sizes of company based on market capitalization.
- There are sub-indexes for growth and value stocks. Subindexes for growth and value stocks are based on P/B ratios adjusted for unrealized gains/losses on marketable securities and unrecognized retirement benefit obligations.
- The Prime Index consists of the top 1,000 stocks in the Total Market Index by market cap excluding stable shareholdings.
- Clear definitions mean that there is no arbitrariness in stock-selection methods.
- The composition of each index is reviewed once a year.

About Russell Investments

Founded in 1936, Russell Investments is a global financial services firm that serves institutional investors, financial advisers, and individuals in more than 40 countries. Over the course of its history, Russell's innovations have come to define many of the practices that are standard in the investment world today and have earned the company a reputation for excellence and leadership.

Through a unique combination of wide-ranging and interlinked businesses, Russell delivers financial products, services, and advice. Russell began its strategic pension fund consulting business in 1969 and today is utilized by many well-known worldwide institutions for investment advice. The firm has US\$140bn in assets under management (as of 30 June 2010) in its mutual funds, retirement products, and institutional funds, and is recognized for its depth of research and quality of manager selection. Russell offers a comprehensive range of implementation services that help institutional clients maximize their assets. The Russell Indexes calculate over 50,000 benchmarks daily covering 70 countries and more than 10,000 securities.

Russell is headquartered in Tacoma, Washington, USA, with offices in Amsterdam, Auckland, Chicago, Johannesburg, London, Melbourne, New York, Paris, San Francisco, Seoul, Singapore, Sydney, Tokyo, and Toronto. For more information about how Russell helps to improve financial security for people, visit <http://www.russell.com>.

Russell/Nomura Japan Equity Indexes are protected by certain intellectual property rights of Nomura Securities Co., Ltd. and Russell Investments. Nomura Securities Co., Ltd. and Russell Investments do not guarantee the accuracy, completeness, reliability, or usefulness thereof and do not account for business activities and services that any index user and its affiliates undertake with the use of the Indexes.

1. Russell/Nomura Japan Equity Indexes performance summary: price returns (excluding dividends, as of end-November 2010)

Index	No. of stocks	Weight (%)	Index value	Returns (%) *				
				1 month	3 months	6 months	12 months	YTD
Total Market	1,482	100.00	193.24	6.02	7.08	-1.94	3.11	-4.69
Value	1,123	48.41	416.94	5.93	6.23	-3.74	1.52	-4.55
Growth	665	51.59	80.23	6.10	7.89	-0.19	4.63	-4.80
Large	346	86.65	189.50	5.94	7.60	-1.33	3.29	-4.82
Large Value	219	39.22	404.92	5.69	6.68	-3.28	1.36	-4.74
Large Growth	239	47.43	84.29	6.14	8.36	0.34	4.91	-4.87
Top	61	50.77	155.83	6.10	7.72	-0.30	3.44	-5.07
Top Value	38	22.54	367.13	6.17	6.16	-2.68	-0.74	-6.33
Top Growth	50	28.23	72.46	6.05	8.99	1.67	6.99	-4.01
Mid	285	35.88	257.50	5.70	7.43	-2.73	3.07	-4.48
Mid Value	181	16.68	424.80	5.04	7.39	-4.09	4.26	-2.56
Mid Growth	189	19.20	119.17	6.28	7.46	-1.52	2.06	-6.10
Mid-Small	1,421	49.23	244.47	5.93	6.43	-3.55	2.77	-4.31
Mid-Small Value	1,085	25.87	424.91	5.72	6.29	-4.65	3.51	-2.99
Mid-Small Growth	615	23.36	103.67	6.17	6.60	-2.32	1.95	-5.73
Small	1,136	13.35	213.86	6.57	3.85	-5.71	1.94	-3.86
Small Value	904	9.19	401.22	6.96	4.34	-5.64	2.17	-3.77
Small Growth	426	4.16	77.22	5.70	2.76	-5.85	1.44	-4.05
Small Core	397	9.01	86.86	6.12	4.17	-5.21	2.23	-3.78
Small Core Value	311	6.02	129.27	6.47	4.69	-5.15	1.86	-4.14
Small Core Growth	176	2.98	32.57	5.42	3.14	-5.34	2.96	-3.05
Micro	739	4.34	95.90	7.50	3.18	-6.71	1.36	-4.02
Micro Value	593	3.17	124.28	7.90	3.70	-6.56	2.75	-3.08
Micro Growth	250	1.17	38.95	6.43	1.81	-7.11	-2.21	-6.49
Prime	990	97.80	651.83	5.99	7.18	-1.80	3.15	-4.71
Prime Value	722	46.77	841.09	5.86	6.32	-3.62	1.48	-4.62
Prime Growth	508	51.02	472.83	6.10	7.98	-0.07	4.71	-4.78

Note: *Returns are not annualized.

Source: Nomura

2. Russell/Nomura Japan Equity Indexes performance summary: total returns (including dividends, as of end-November 2010)

Index	No. of stocks	Weight (%)	Index value	Returns (%) *				
				1 month	3 months	6 months	12 months	YTD
Total Market	1,482	100.00	273.50	6.04	7.97	-1.02	5.10	-2.91
Value	1,123	48.41	612.48	5.92	7.23	-2.76	3.65	-2.57
Growth	665	51.59	109.40	6.14	8.66	0.67	6.49	-3.21
Large	346	86.65	268.41	5.95	8.51	-0.39	5.29	-3.05
Large Value	219	39.22	594.35	5.68	7.74	-2.27	3.50	-2.75
Large Growth	239	47.43	115.44	6.18	9.15	1.22	6.79	-3.28
Top	61	50.77	223.33	6.12	8.75	0.77	5.65	-3.11
Top Value	38	22.54	540.38	6.16	7.31	-1.57	1.53	-4.20
Top Growth	50	28.23	101.56	6.10	9.93	2.72	9.15	-2.19
Mid	285	35.88	360.03	5.71	8.16	-1.98	4.77	-2.97
Mid Value	181	16.68	620.43	5.04	8.31	-3.22	6.20	-0.77
Mid Growth	189	19.20	158.29	6.29	8.04	-0.87	3.56	-4.81
Mid-Small	1,421	49.23	343.28	5.94	7.17	-2.79	4.55	-2.72
Mid-Small Value	1,085	25.87	622.39	5.72	7.16	-3.79	5.51	-1.16
Mid-Small Growth	615	23.36	137.72	6.20	7.18	-1.67	3.48	-4.41
Small	1,136	13.35	303.87	6.58	4.57	-4.93	3.93	-2.07
Small Value	904	9.19	591.62	6.96	5.15	-4.80	4.29	-1.84
Small Growth	426	4.16	102.64	5.75	3.32	-5.20	3.10	-2.57
Small Core	397	9.01	100.37	6.14	4.92	-4.43	4.19	-2.00
Small Core Value	311	6.02	151.35	6.47	5.51	-4.32	3.93	-2.25
Small Core Growth	176	2.98	36.50	5.46	3.76	-4.65	4.70	-1.51
Micro	739	4.34	112.18	7.50	3.87	-5.94	3.39	-2.21
Micro Value	593	3.17	147.45	7.89	4.48	-5.71	4.98	-1.08
Micro Growth	250	1.17	43.51	6.47	2.24	-6.56	-0.72	-5.17
Prime	990	97.80	770.27	6.00	8.07	-0.88	5.14	-2.93
Prime Value	722	46.77	1,011.31	5.85	7.33	-2.64	3.60	-2.64
Prime Growth	508	51.02	549.68	6.14	8.75	0.79	6.58	-3.19

Note: *Returns are not annualized.

Source: Nomura

3. Russell/Nomura index data by industrial sector: number of stocks and weighting (as of end-November 2010)

	Index	Total Market		Value		Growth		Small		Prime	
		No. of stocks	Weight (%)	No. of stocks	Weight (%)	No. of stocks	Weight (%)	No. of stocks	Weight (%)	No. of stocks	Weight (%)
	Overall	1,482	100.00	1,123	100.00	665	100.00	1,136	100.00	990	100.00
1	Fishery, agriculture & forestry	5	0.09	4	0.09	4	0.10	5	0.69	4	0.09
2	Mining	5	0.33	5	0.17	2	0.49	3	0.17	4	0.34
3	Construction	71	1.91	64	2.87	17	1.01	61	4.95	44	1.84
4	Foods	66	3.01	53	1.91	34	4.03	50	4.30	41	2.95
5	Textiles & apparel	27	0.82	25	0.98	6	0.67	23	2.05	19	0.81
6	Pulp & paper	11	0.35	11	0.70	2	0.03	8	0.66	7	0.34
7	Chemicals	119	6.03	93	6.03	52	6.03	91	8.68	75	5.97
8	Pharmaceuticals	38	4.43	19	1.14	32	7.52	24	2.69	29	4.49
9	Oil & coal products	8	0.88	7	1.48	3	0.32	3	0.11	6	0.89
10	Rubber products	10	0.66	10	0.77	3	0.55	8	0.89	9	0.67
11	Glass & ceramics products	23	1.21	21	0.99	9	1.43	17	1.85	16	1.21
12	Iron & steel	31	2.17	25	1.22	10	3.07	23	2.35	22	2.19
13	Nonferrous metals	21	1.37	14	1.28	12	1.45	14	1.65	17	1.38
14	Metal products	22	0.66	18	0.89	5	0.45	17	1.12	17	0.66
15	Machinery	106	4.93	84	3.45	47	6.32	84	7.06	65	4.84
16	Electric appliances	152	16.08	104	10.46	84	21.36	109	9.31	107	16.25
17	Transportation equipment	59	9.40	49	8.48	27	10.26	41	4.88	45	9.52
18	Precision instruments	25	1.44	16	0.35	14	2.46	19	1.31	15	1.43
19	Other products	37	2.15	28	1.75	12	2.52	30	2.33	24	2.14
20	Electric power & gas	18	5.03	16	7.57	12	2.64	5	0.47	16	5.13
21	Land transportation	35	3.69	23	2.31	23	4.99	17	1.55	25	3.72
22	Marine transportation	8	0.57	6	1.13	3	0.05	5	0.29	7	0.58
23	Air transportation	1	0.28	0	0.00	1	0.54	0	0.00	1	0.28
24	Warehousing & harbor transportation services	15	0.24	14	0.46	3	0.03	13	0.82	7	0.21
25	Information & communication	88	6.18	48	5.95	56	6.40	72	5.74	55	6.19
26	Wholesale trade	101	5.11	92	7.69	26	2.69	89	6.32	50	4.96
27	Retail trade	133	3.82	83	4.25	78	3.43	114	8.22	80	3.66
28	Banks	90	8.12	87	16.52	4	0.25	63	8.28	80	8.26
29	Securities & commodity futures	22	1.41	18	2.45	8	0.44	18	1.53	14	1.42
30	Insurance	7	2.51	5	3.66	3	1.43	1	0.08	7	2.57
31	Other financing business	18	0.81	17	1.54	2	0.12	14	1.64	17	0.82
32	Real estate	37	2.21	23	0.73	20	3.60	30	2.38	23	2.19
33	Services	73	2.08	41	0.74	51	3.33	65	5.61	42	2.00

Source: Nomura

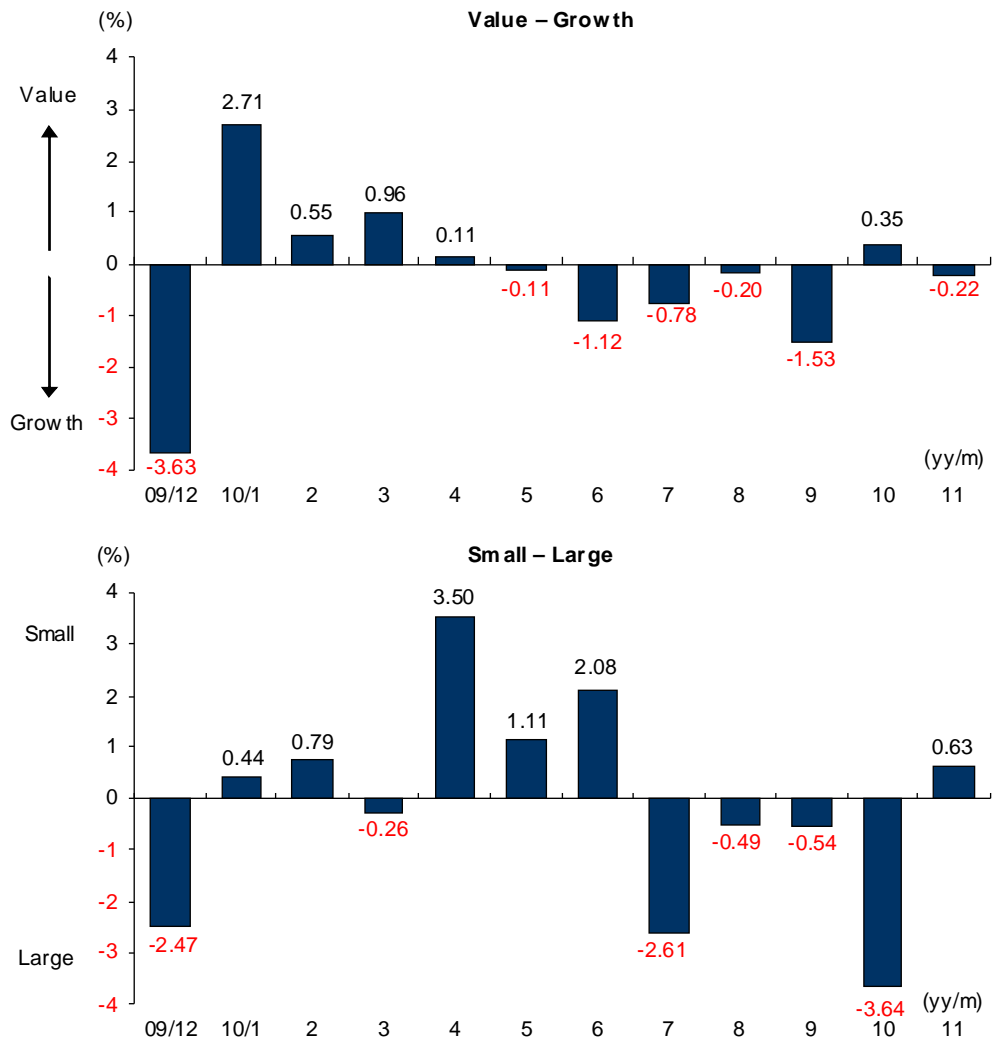
4. Russell/Nomura index performance by industrial sector: monthly returns* (as of end-November 2010) (%)

	Index	Total Market		Value		Growth		Small		Prime	
		ex dividends	incl dividends	ex dividends	incl dividends	ex dividends	incl dividends	ex dividends	incl dividends	ex dividends	incl dividends
	Overall	6.02	6.04	5.93	5.92	6.10	6.14	6.57	6.58	5.99	6.00
1	Fishery, agriculture & forestry	0.05	0.23	0.77	1.15	-0.55	-0.55	0.05	0.23	-0.58	-0.40
2	Mining	1.72	1.72	-1.45	-1.45	2.80	2.80	1.06	1.06	1.73	1.73
3	Construction	7.59	7.59	8.20	8.20	6.01	6.01	8.09	8.09	7.40	7.40
4	Foods	5.35	5.36	4.15	4.19	5.89	5.89	3.46	3.46	5.44	5.46
5	Textiles & apparel	4.41	4.45	7.14	7.21	0.87	0.87	6.25	6.37	4.43	4.47
6	Pulp & paper	2.16	2.17	2.11	2.13	3.14	3.14	6.61	6.56	2.07	2.09
7	Chemicals	4.63	4.66	5.47	5.49	3.85	3.89	3.62	3.60	4.60	4.63
8	Pharmaceuticals	3.52	3.50	3.11	3.11	3.58	3.55	1.43	1.49	3.48	3.47
9	Oil & coal products	10.12	10.11	9.97	9.97	10.76	10.76	12.98	12.92	10.12	10.12
10	Rubber products	6.13	6.13	6.31	6.31	5.89	5.89	8.46	8.46	6.16	6.16
11	Glass & ceramics products	11.73	11.73	11.38	11.38	11.95	11.97	7.71	7.68	11.75	11.76
12	Iron & steel	7.43	7.43	8.02	8.01	7.22	7.22	7.20	7.17	7.40	7.40
13	Nonferrous metals	5.20	5.12	6.11	5.92	4.46	4.46	7.53	7.53	5.14	5.05
14	Metal products	4.16	4.20	2.37	2.39	7.62	7.70	4.93	5.00	4.10	4.14
15	Machinery	9.94	9.98	7.87	7.88	11.03	11.08	9.11	9.17	9.83	9.87
16	Electric appliances	7.23	7.36	7.64	7.64	7.05	7.23	12.42	12.45	7.15	7.27
17	Transportation equipment	9.00	9.00	10.00	9.99	8.24	8.23	10.92	10.87	8.99	8.98
18	Precision instruments	7.76	7.75	8.19	8.16	7.70	7.69	9.28	9.24	7.82	7.80
19	Other products	7.55	7.56	5.90	5.90	8.66	8.66	7.86	7.88	7.55	7.55
20	Electric power & gas	-0.16	-0.16	-0.44	-0.44	0.58	0.58	-4.05	-4.05	-0.16	-0.16
21	Land transportation	1.11	1.11	1.63	1.64	0.88	0.88	0.57	0.60	1.13	1.13
22	Marine transportation	9.65	9.84	9.46	9.65	14.19	14.19	8.77	8.56	9.62	9.81
23	Air transportation	-2.95	-2.95	-	-	-2.95	-2.95	-	-	-2.95	-2.95
24	Warehousing & harbor transportation services	5.17	5.16	5.07	5.06	6.67	6.67	5.05	5.03	5.31	5.31
25	Information & communication	5.74	5.76	5.15	5.14	6.26	6.30	5.44	5.45	5.67	5.69
26	Wholesale trade	6.66	6.52	6.18	6.06	7.97	7.76	5.70	5.72	6.67	6.52
27	Retail trade	7.59	7.60	8.32	8.33	6.74	6.75	5.05	5.09	7.77	7.78
28	Banks	4.88	4.88	4.90	4.90	3.85	3.85	2.75	2.74	4.89	4.89
29	Securities & commodity futures	15.11	14.98	15.17	15.01	14.82	14.81	13.05	12.97	15.23	15.10
30	Insurance	6.51	6.52	2.43	2.45	17.78	17.78	10.00	10.00	6.51	6.52
31	Other financing business	5.11	5.10	5.14	5.12	4.76	4.76	13.77	13.71	5.12	5.10
32	Real estate	0.45	0.44	2.42	2.40	0.08	0.08	4.75	4.73	0.28	0.27
33	Services	4.89	4.86	9.13	9.11	4.04	4.02	8.22	8.24	4.89	4.86

Note: *Returns are not annualized.

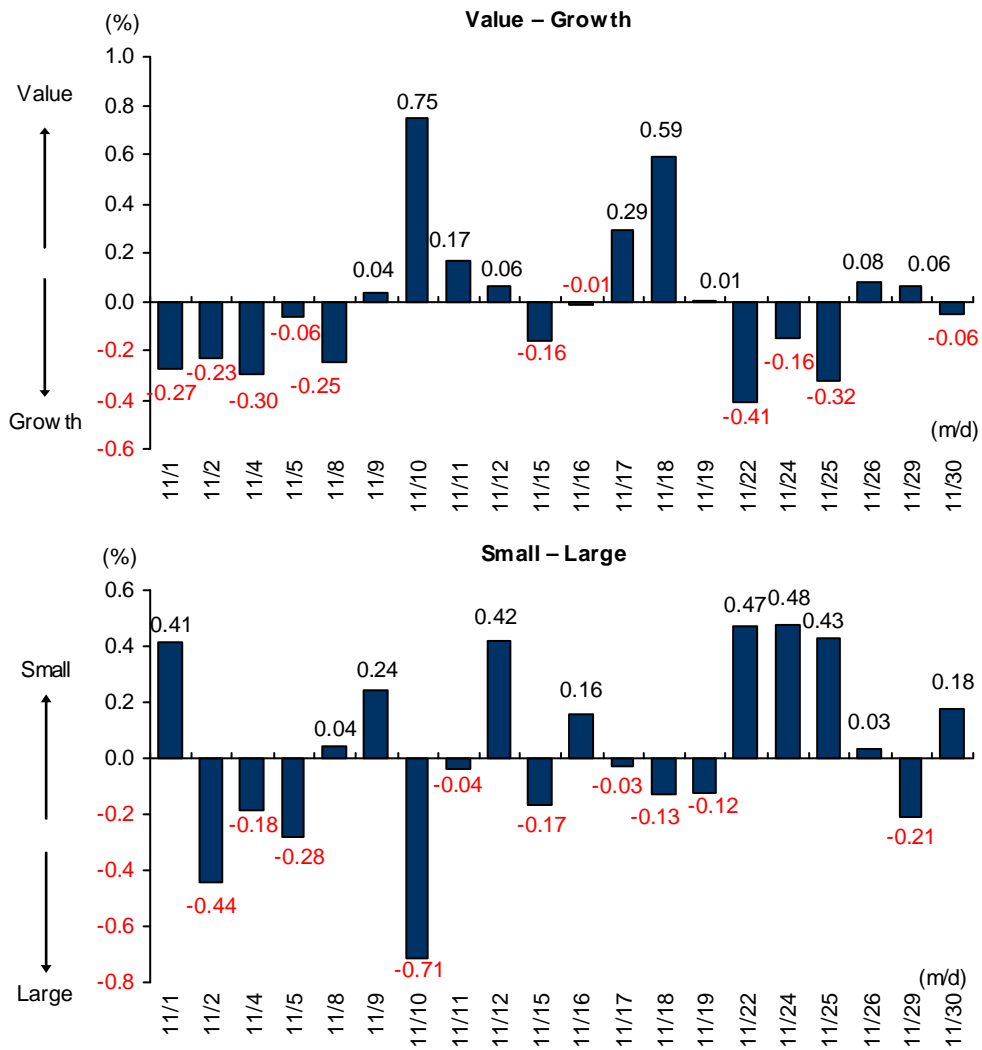
Source: Nomura

5. Monthly performance: style—total returns



Note: Value - Growth is the difference between Value and Growth returns. Small - Large is the difference between Small and Large returns. Returns are not annualized.
Source: Nomura

6. Daily performance: style—total returns



Note: Value – Growth is the difference between Value and Growth returns. Small – Large is the difference between Small and Large returns. Returns are not annualized.
 Source: Nomura

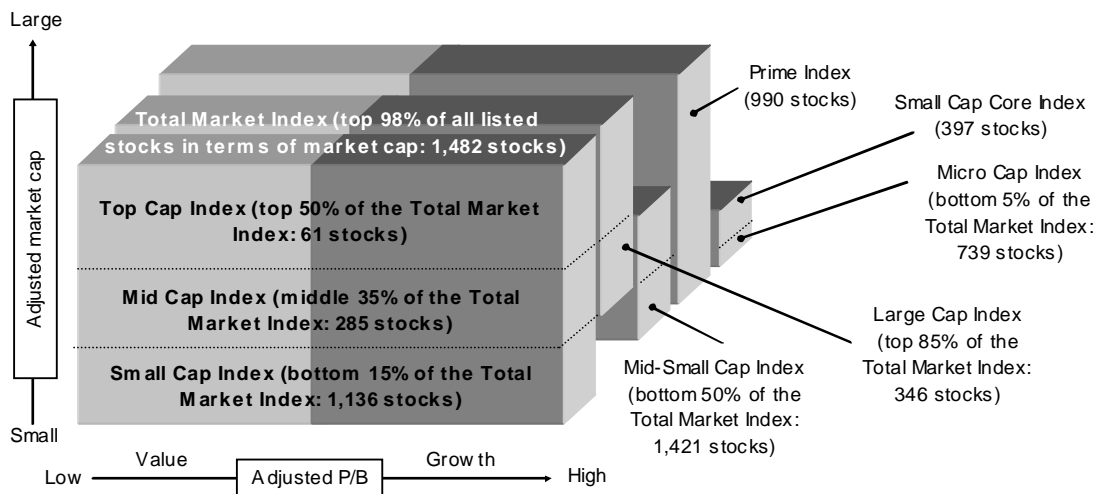
7. Russell/Nomura Japan Equity Indexes: key indicators (as of end-November 2010)

Index	P/E x	P/B x	Dividend yield %	ROE %	Rec profit growth %
Total Market	15.86	1.04	2.12	6.73	49.39
Value	15.03	0.81	2.28	5.46	54.98
Growth	16.73	1.44	1.96	8.88	43.74
Large	15.89	1.10	2.12	7.10	49.47
Large Value	14.85	0.85	2.30	5.87	54.14
Large Growth	16.85	1.44	1.98	8.82	45.21
Top	14.96	1.10	2.37	7.58	48.69
Top Value	13.58	0.87	2.53	6.54	47.68
Top Growth	16.28	1.41	2.23	8.92	49.68
Mid	17.40	1.09	1.78	6.44	50.62
Mid Value	16.97	0.84	1.98	5.02	64.66
Mid Growth	17.78	1.49	1.61	8.67	39.11
Mid-Small	16.91	0.99	1.86	5.96	50.13
Mid-Small Value	16.55	0.76	2.05	4.65	62.32
Mid-Small Growth	17.33	1.48	1.64	8.84	37.34
Small	15.73	0.78	2.06	5.05	48.97
Small Value	15.84	0.65	2.19	4.14	58.53
Small Growth	15.48	1.43	1.77	9.59	30.63
Small Core	17.16	0.82	2.04	4.88	36.72
Small Core Value	18.05	0.68	2.16	3.83	39.00
Small Core Growth	15.62	1.42	1.82	9.44	32.50
Micro	13.40	0.70	2.09	5.35	76.06
Micro Value	12.85	0.59	2.25	4.67	100.24
Micro Growth	15.15	1.46	1.65	9.99	26.20
Prime	15.97	1.06	2.11	6.77	49.72
Prime Value	15.19	0.82	2.27	5.48	55.34
Prime Growth	16.76	1.44	1.97	8.87	44.19

Note: All financial data are based on current-FY forecasts (with preference given to consolidated figures).

Source: Nomura

8. Russell/Nomura Japan Equity Indexes



Note: No. of stocks in each index is as of 30 November 2010.
 Source: Nomura

All the indexes (Total Market, the capitalization indexes, Value, Growth, and Prime) also have indexes based on the 33 industrial sectors. Divisions based on market cap exclude the value of stable shareholdings. Value and Growth indexes are defined in terms of P/B ratios adjusted for unrealized gains/losses.

For composition rules and other information please refer to *Russell/Nomura Japan Equity Indexes*.

9. Russell/Nomura Japan Equity Indexes performance summary: price returns (excluding dividends), US dollar basis (as of end-November 2010)

Index	No. of stocks	Weight (%)	Index value	Returns (%) *				
				1 month	3 months	6 months	12 months	YTD
Total Market	1,482	100.00	551.68	1.79	7.34	6.76	5.71	4.50
Value	1,123	48.41	1,190.35	1.70	6.49	4.80	4.08	4.65
Growth	665	51.59	229.05	1.87	8.15	8.67	7.27	4.38
Large	346	86.65	541.02	1.71	7.86	7.43	5.89	4.35
Large Value	219	39.22	1,156.02	1.47	6.94	5.30	3.92	4.44
Large Growth	239	47.43	240.65	1.90	8.63	9.24	7.56	4.30
Top	61	50.77	444.89	1.87	7.98	8.54	6.05	4.08
Top Value	38	22.54	1,048.14	1.94	6.42	5.95	1.77	2.70
Top Growth	50	28.23	206.86	1.81	9.26	10.69	9.69	5.25
Mid	285	35.88	735.13	1.48	7.69	5.90	5.67	4.72
Mid Value	181	16.68	1,212.78	0.85	7.65	4.41	6.89	6.83
Mid Growth	189	19.20	340.21	2.03	7.72	7.21	4.63	2.96
Mid-Small	1,421	49.23	697.95	1.70	6.69	5.00	5.36	4.91
Mid-Small Value	1,085	25.87	1,213.09	1.50	6.55	3.81	6.12	6.36
Mid-Small Growth	615	23.36	295.98	1.94	6.86	6.35	4.52	3.36
Small	1,136	13.35	610.56	2.31	4.10	2.66	4.52	5.41
Small Value	904	9.19	1,145.46	2.69	4.60	2.73	4.75	5.51
Small Growth	426	4.16	220.47	1.48	3.01	2.50	4.00	5.20
Small Core	397	9.01	105.51	1.89	4.43	3.20	4.81	5.50
Small Core Value	311	6.02	157.03	2.22	4.94	3.27	4.43	5.10
Small Core Growth	176	2.98	39.57	1.21	3.40	3.06	5.56	6.29
Micro	739	4.34	116.50	3.21	3.43	1.57	3.92	5.23
Micro Value	593	3.17	150.96	3.59	3.95	1.73	5.34	6.27
Micro Growth	250	1.17	47.31	2.18	2.06	1.13	0.26	2.52
Prime	990	97.80	899.63	1.76	7.44	6.91	5.75	4.48
Prime Value	722	46.77	1,160.84	1.63	6.58	4.93	4.04	4.58
Prime Growth	508	51.02	652.58	1.87	8.24	8.79	7.35	4.40

Note: *Returns are not annualized.

Source: Nomura

10. Russell/Nomura Japan Equity Indexes performance summary: total returns (including dividends), US dollar basis (as of end-November 2010)

Index	No. of stocks	Weight (%)	Index value	Returns (%) *				
				1 month	3 months	6 months	12 months	YTD
Total Market	1,482	100.00	780.82	1.80	8.23	7.76	7.76	6.45
Value	1,123	48.41	1,748.59	1.69	7.50	5.86	6.27	6.82
Growth	665	51.59	312.32	1.90	8.92	9.61	9.18	6.12
Large	346	86.65	766.30	1.72	8.77	8.45	7.94	6.30
Large Value	219	39.22	1,696.84	1.46	8.00	6.40	6.11	6.62
Large Growth	239	47.43	329.58	1.94	9.42	10.20	9.49	6.05
Top	61	50.77	637.60	1.89	9.02	9.71	8.32	6.23
Top Value	38	22.54	1,542.75	1.92	7.57	7.16	4.09	5.04
Top Growth	50	28.23	289.96	1.86	10.20	11.84	11.90	7.24
Mid	285	35.88	1,027.86	1.49	8.43	6.72	7.42	6.39
Mid Value	181	16.68	1,771.27	0.85	8.57	5.37	8.88	8.79
Mid Growth	189	19.20	451.91	2.05	8.31	7.92	6.17	4.37
Mid-Small	1,421	49.23	980.04	1.71	7.43	5.83	7.18	6.66
Mid-Small Value	1,085	25.87	1,776.87	1.49	7.43	4.75	8.18	8.37
Mid-Small Growth	615	23.36	393.18	1.96	7.44	7.06	6.09	4.81
Small	1,136	13.35	867.54	2.32	4.83	3.51	6.55	7.37
Small Value	904	9.19	1,689.03	2.69	5.41	3.64	6.92	7.62
Small Growth	426	4.16	293.04	1.52	3.58	3.21	5.71	6.82
Small Core	397	9.01	121.93	1.90	5.18	4.05	6.82	7.45
Small Core Value	311	6.02	183.85	2.22	5.76	4.17	6.55	7.17
Small Core Growth	176	2.98	44.34	1.25	4.01	3.81	7.34	7.99
Micro	739	4.34	136.27	3.21	4.12	2.40	6.00	7.21
Micro Value	593	3.17	179.11	3.58	4.74	2.65	7.63	8.46
Micro Growth	250	1.17	52.85	2.22	2.49	1.73	1.79	3.97
Prime	990	97.80	1,063.10	1.77	8.33	7.92	7.79	6.42
Prime Value	722	46.77	1,395.76	1.62	7.60	6.00	6.21	6.74
Prime Growth	508	51.02	758.64	1.90	9.02	9.73	9.27	6.14

Note: *Returns are not annualized.

Source: Nomura

Data publication services

Data for the Russell/Nomura Japan Equity Indexes can be obtained via the following channels.

Index values are published in the following media:

- Bloomberg (RNJI)
- Jiji (SQ21, SQ22, SQ23, SQ24)
- QUICK (NRU500–503, 510–517)
- Reuters (FRCNRI01, FRCNRI02, FRCNRI03, FRCNRI04)
- Our website (<http://qr.nomura.co.jp/jp/frcnri/index.html>)

Daily index values for the Russell/Nomura Prime Index are published in the following media:

- Bloomberg (RNPJ <INDEX>)
- Jiji (RT14 or RNPJ/2)
- QUICK (140)
- Reuters (.JRN)
- Our website (<http://qr.nomura.co.jp/jp/frcnri/index.html>)

Daily index values for the Russell/Nomura Small Cap Core Index are published in the following media:

- Bloomberg (RNSCC <INDEX>)
- Jiji (RT14 or RNSCC/NOMURA)
- QUICK (130)
- Reuters (.JRNSC)

More detailed data

More detailed data on index values and individual stock information can be obtained through Nomura Research Institute services Aurora, e-Aurora, and IDS.

For information, contact:
 Nomura Research Institute
 Investment Information Systems Business Department
 +81-3-5533-3870
 e-mail: ids-sales@nri.co.jp

Rule book:

Russell/Nomura Japan equity index rule book

While every effort is made to ensure that the information used in this report and all published information is based on reliable data, it should be noted that at times, data may have changed or been amended.

Any Authors named on this report are Research Analysts unless otherwise indicated

Online availability of research and additional conflict-of-interest disclosures

Nomura Japanese Equity Research is available electronically for clients in the US on NOMURA.COM, REUTERS, BLOOMBERG and THOMSON ONE ANALYTICS. For clients in Europe, Japan and elsewhere in Asia it is available on NOMURA.COM, REUTERS and BLOOMBERG. Important disclosures may be accessed through the left hand side of the Nomura Disclosure web page <http://www.nomura.com/research> or requested from Nomura Securities International, Inc., on 1-877-865-5752. If you have any difficulties with the website, please email grpsupport-eu@nomura.com for technical assistance.

Industry Specialists identified in some Nomura research reports are senior employees within the Firm who are responsible for the sales and trading effort in the sector for which they have coverage. Industry Specialists do not contribute in any manner to the content of research report in which their names appear.

DISCLAIMERS

This publication contains material that has been prepared by the Nomura entity identified on the banner at the top or the bottom of page 1 herein and, if applicable, with the contributions of one or more Nomura entities whose employees and their respective affiliations are specified on page 1 herein or elsewhere identified in the publication. Affiliates and subsidiaries of Nomura Holdings, Inc. (collectively, the 'Nomura Group'), include: Nomura Securities Co., Ltd. ('NSC') Tokyo, Japan; Nomura International plc, United Kingdom; Nomura Securities International, Inc. ('NSI'), New York, NY; Nomura International (Hong Kong) Ltd., Hong Kong; Nomura Financial Investment (Korea) Co., Ltd., Korea (Information on Nomura analysts registered with the Korea Financial Investment Association ('KOFIA') can be found on the KOFIA Intranet at <http://dis.kofia.or.kr>); Nomura Singapore Ltd., Singapore (Registration number 197201440E, regulated by the Monetary Authority of Singapore); Nomura Securities Singapore Pte Ltd., Singapore (Registration number 198702521E, regulated by the Monetary Authority of Singapore); Capital Nomura Securities Public Company Limited; Nomura Australia Ltd., Australia (ABN 48 003 032 513), regulated by the Australian Securities and Investment Commission and holder of an Australian financial services licence number 246412; P.T. Nomura Indonesia, Indonesia; Nomura Securities Malaysia Sdn. Bhd., Malaysia; Nomura International (Hong Kong) Ltd., Taipei Branch, Taiwan; Nomura Financial Advisory and Securities (India) Private Limited, Mumbai, India (Registered Address: Ceejay House, Level 11, Plot F, Shivsagar Estate, Dr. Annie Besant Road, Worli, Mumbai- 400 018, India; SEBI Registration No: BSE INB011299030, NSE INB231299034, INF231299034, INE 231299034).

THIS MATERIAL IS: (I) FOR YOUR PRIVATE INFORMATION, AND WE ARE NOT SOLICITING ANY ACTION BASED UPON IT; (II) NOT TO BE CONSTRUED AS AN OFFER TO SELL OR A SOLICITATION OF AN OFFER TO BUY ANY SECURITY IN ANY JURISDICTION WHERE SUCH OFFER OR SOLICITATION WOULD BE ILLEGAL; AND (III) BASED UPON INFORMATION THAT WE CONSIDER RELIABLE.

NOMURA GROUP DOES NOT WARRANT OR REPRESENT THAT THE PUBLICATION IS ACCURATE, COMPLETE, RELIABLE, FIT FOR ANY PARTICULAR PURPOSE OR MERCHANTABLE AND DOES NOT ACCEPT LIABILITY FOR ANY ACT (OR DECISION NOT TO ACT) RESULTING FROM USE OF THIS PUBLICATION AND RELATED DATA. TO THE MAXIMUM EXTENT PERMISSIBLE ALL WARRANTIES AND OTHER ASSURANCES BY NOMURA GROUP ARE HEREBY EXCLUDED AND NOMURA GROUP SHALL HAVE NO LIABILITY FOR THE USE, MISUSE, OR DISTRIBUTION OF THIS INFORMATION.

Opinions expressed are current opinions as of the original publication date appearing on this material only and the information, including the opinions contained herein, are subject to change without notice. Nomura is under no duty to update this publication. If and as applicable, NSI's investment banking relationships, investment banking and non-investment banking compensation and securities ownership (identified in this report as 'Disclosures Required in the United States'), if any, are specified in disclaimers and related disclosures in this report. In addition, other members of the Nomura Group may from time to time perform investment banking or other services (including acting as advisor, manager or lender) for, or solicit investment banking or other business from, companies mentioned herein. Further, the Nomura Group, and/or its officers, directors and employees, including persons, without limitation, involved in the preparation or issuance of this material may, to the extent permitted by applicable law and/or regulation, have long or short positions in, and buy or sell, the securities (including ownership by NSI, referenced above), or derivatives (including options) thereof, of companies mentioned herein, or related securities or derivatives. In addition, the Nomura Group, excluding NSI, may act as a market maker and principal, willing to buy and sell certain of the securities of companies mentioned herein. Further, the Nomura Group may buy and sell certain of the securities of companies mentioned herein, as agent for its clients.

Investors should consider this report as only a single factor in making their investment decision and, as such, the report should not be viewed as identifying or suggesting all risks, direct or indirect, that may be associated with any investment decision. Please see the further disclaimers in the disclosure information on companies covered by Nomura analysts available at www.nomura.com/research under the 'Disclosure' tab. Nomura Group produces a number of different types of research product including, among others, fundamental analysis, quantitative analysis and short term trading ideas; recommendations contained in one type of research product may differ from recommendations contained in other types of research product, whether as a result of differing time horizons, methodologies or otherwise; it is possible that individual employees of Nomura may have different perspectives to this publication.

NSC and other non-US members of the Nomura Group (i.e. excluding NSI), their officers, directors and employees may, to the extent it relates to non-US issuers and is permitted by applicable law, have acted upon or used this material prior to, or immediately following, its publication.

Foreign-currency-denominated securities are subject to fluctuations in exchange rates that could have an adverse effect on the value or price of, or income derived from, the investment. In addition, investors in securities such as ADRs, the values of which are influenced by foreign currencies, effectively assume currency risk.

The securities described herein may not have been registered under the US Securities Act of 1933, and, in such case, may not be offered or sold in the United States or to US persons unless they have been registered under such Act, or except in compliance with an exemption from the registration requirements of such Act. Unless governing law permits otherwise, you must contact a Nomura entity in your home jurisdiction if you want to use our services in effecting a transaction in the securities mentioned in this material.

This publication has been approved for distribution in the United Kingdom and European Union as investment research by Nomura International plc ('NIPIC'), which is authorized and regulated by the UK Financial Services Authority ('FSA') and is a member of the London Stock Exchange. It does not constitute a personal recommendation, as defined by the FSA, or take into account the particular investment objectives, financial situations, or needs of individual investors. It is intended only for investors who are 'eligible counterparties' or 'professional clients' as defined by the FSA, and may not, therefore, be redistributed to retail clients as defined by the FSA. This publication may be distributed in Germany via Nomura Bank (Deutschland) GmbH, which is authorized and regulated in Germany by the Federal Financial Supervisory Authority ('BaFin'). This publication has been approved by Nomura International (Hong Kong) Ltd. ('NIHK'), which is regulated by the Hong Kong Securities and Futures Commission, for distribution in Hong Kong by NIHK. This publication has been approved for distribution in Australia by Nomura Australia Ltd, which is authorized and regulated in Australia by the Australian Securities and Investment Commission ('ASIC'). This publication has also been approved for distribution in Malaysia by Nomura Securities Malaysia Sdn Bhd. In Singapore, this publication has been distributed by Nomura Singapore Limited ('NSL') and/or Nomura Securities Singapore Pte Ltd ('NSS'). NSL and NSS accepts legal responsibility for the content of this publication, where it concerns securities, futures and foreign exchange, issued by their foreign affiliates in respect of recipients who are not accredited, expert or institutional

investors as defined by the Securities and Futures Act (Chapter 289). Recipients of this publication should contact NSL or NSS (as the case may be) in respect of matters arising from, or in connection with, this publication. Unless prohibited by the provisions of Regulation S of the U.S. Securities Act of 1933, this material is distributed in the United States, by Nomura Securities International, Inc., a US-registered broker-dealer, which accepts responsibility for its contents in accordance with the provisions of Rule 15a-6, under the US Securities Exchange Act of 1934. This publication has not been approved for distribution in the Kingdom of Saudi Arabia or to clients other than 'professional clients' in the United Arab Emirates by Nomura Saudi Arabia, Nomura International plc or any other member of the Nomura Group, as the case may be. Neither this publication nor any copy thereof may be taken or transmitted or distributed, directly or indirectly, by any person other than those authorised to do so into the Kingdom of Saudi Arabia or in the United Arab Emirates or to any person located in the Kingdom of Saudi Arabia or to clients other than 'professional clients' in the United Arab Emirates. By accepting to receive this publication, you represent that you are not located in the Kingdom of Saudi Arabia or that you are a 'professional client' in the United Arab Emirates and agree to comply with these restrictions. Any failure to comply with these restrictions may constitute a violation of the laws of the Kingdom of Saudi Arabia or the United Arab Emirates. No part of this material may be (i) copied, photocopied, or duplicated in any form, by any means; or (ii) redistributed without the prior written consent of the Nomura Group member identified in the banner on page 1 of this report. Further information on any of the securities mentioned herein may be obtained upon request. If this publication has been distributed by electronic transmission, such as e-mail, then such transmission cannot be guaranteed to be secure or error-free as information could be intercepted, corrupted, lost, destroyed, arrive late or incomplete, or contain viruses. The sender therefore does not accept liability for any errors or omissions in the contents of this publication, which may arise as a result of electronic transmission. If verification is required, please request a hard-copy version.

Disclaimers required in Japan

Investors in the financial products offered by Nomura Securities may incur fees and commissions specific to those products (for example, transactions involving Japanese equities are subject to a sales commission of up to 1.365% (tax included) of the transaction amount or a commission of ¥2,730 (tax included) for transactions of ¥200,000 or less, while transactions involving investment trusts are subject to various fees, such as sales commissions and trust fees, specific to each investment trust). In addition, all products carry the risk of losses owing to price fluctuations or other factors. Fees and risks vary by product. Please thoroughly read the written materials provided, such as documents delivered before making a contract, listed securities documents, or prospectuses.

Nomura Securities Co., Ltd.

Financial instruments firm registered with the Kanto Local Finance Bureau (registration No. 142)

Member associations: Japan Securities Dealers Association; Japan Securities Investment Advisers Association; and The Financial Futures Association of Japan.

Additional information available upon request

NIPlc and other Nomura Group entities manage conflicts identified through the following: their Chinese Wall, confidentiality and independence policies, maintenance of a Restricted List and a Watch List, personal account dealing rules, policies and procedures for managing conflicts of interest arising from the allocation and pricing of securities and impartial investment research and disclosure to clients via client documentation.

Disclosure information is available at the Nomura Disclosure web page:

<http://www.nomura.com/research/pages/disclosures/disclosures.aspx>