

Russell/Nomura Japan Equity Indexes

EQUITY: INDEX SERVICES DEPARTMENT

Performance summary

Research Analysts

[Japan index products](#)

Index Services Department - NFRC

idx_mgr@nfrc.co.jp

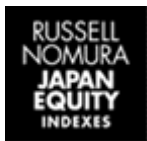


Fig. 1: Russell/Nomura Japan Equity Indexes performance summary

As of end-May 2023

Total return (including dividends)

(Index)	No of stocks	Weight (%)	Index value	Returns (%) *				
				1 month	3 month	6 month	12 month	YTD
Total Market	1491	100.00	905.52	3.88	8.45	9.09	14.52	14.41
Value	1097	48.36	1923.44	2.97	6.15	10.11	17.17	13.24
Growth	768	51.64	377.15	4.75	10.71	8.15	12.07	15.53
Large	299	85.70	875.20	4.54	9.26	9.74	14.52	15.45
Large Value	201	39.59	1800.09	3.65	6.55	10.39	16.76	13.73
Large Growth	186	46.10	397.59	5.31	11.71	9.19	12.64	16.98
Top	60	52.72	736.00	5.49	10.35	10.76	14.35	16.62
Top Value	38	22.80	1741.16	5.34	8.26	11.82	18.53	14.64
Top Growth	44	29.92	345.41	5.61	12.02	9.96	11.13	18.19
Mid	239	32.98	1155.96	3.04	7.55	8.16	14.78	13.63
Mid Value	163	16.79	1704.05	1.43	4.31	8.51	14.42	12.53
Mid Growth	142	16.18	554.29	4.76	11.16	7.79	15.44	14.81
Mid-Small	1431	47.28	1136.08	2.14	6.41	7.29	14.67	12.04
Mid-Small Value	1059	25.56	1885.31	0.95	4.35	8.62	15.98	12.02
Mid-Small Growth	724	21.72	479.65	3.59	8.96	5.74	13.39	12.05
Small	1192	14.30	1081.24	0.14	3.87	5.34	14.41	8.52
Small Value	896	8.77	2084.53	0.03	4.41	8.85	18.90	11.07
Small Growth	582	5.53	360.94	0.30	3.02	0.18	7.83	4.70
Small Core	400	9.89	349.18	0.61	4.92	5.87	14.42	9.21
Small Core Value	285	5.80	506.48	0.66	5.43	9.47	19.22	11.86
Small Core Growth	216	4.09	132.46	0.55	4.21	1.12	8.08	5.64
Micro	792	4.41	417.86	-0.91	1.58	4.16	14.36	7.01
Micro Value	611	2.97	568.46	-1.18	2.47	7.66	18.29	9.55
Micro Growth	366	1.44	140.49	-0.37	-0.21	-2.38	7.10	2.13
Prime	996	98.02	2542.93	3.98	8.59	9.17	14.51	14.54
Prime Value	716	47.01	3156.57	3.10	6.26	10.15	17.13	13.31
Prime Growth	540	51.01	1894.77	4.81	10.85	8.29	12.12	15.70

Note: * Returns are not annualized.

Source: Nomura Fiduciary Research & Consulting Co., Ltd. (NFRC)

*Japanese version published on 1 June 2023.

What are the Russell/Nomura Japan Equity Indexes?

The Russell/Nomura Japan Equity Indexes are Japanese equity indexes developed jointly by Nomura Fiduciary Research & Consulting Co., Ltd. and Frank Russell Company.^[1]

Russell/Nomura Japan Equity Indexes should be useful in:

- Determining investment strategies (strategic asset allocation)
- Determining manager structures
- Devising asset management benchmarks
- Supporting portfolio management activities
- Evaluating the performance of various investment styles
- Managing risk

Russell/Nomura Japan Equity Indexes have the following characteristics:

- They are share price indexes that are weighted by free float-adjusted market capitalization and cover the top 98% of all listed stocks in terms of float-adjusted market capitalization, thereby offering broad market coverage
- Stocks are chosen from the whole Japanese stock market^[2]
- Because the indexes take into consideration the stable shareholding ratio, they reflect the stocks that are actually available for investment
- There are style indexes for large and small companies and for value and growth stocks
- The Prime Index consists of the top 1,000 stocks in the Total Market Index by market cap excluding stable shareholdings
- Stocks are selected quantitatively based on clearly defined criteria
- The composition of each index is reviewed once a year

Complete details of rules for the Russell/Nomura Japan Equity Index can be found in the Russell/Nomura Japan Equity Indexes rulebook.

1. NFRC took over the index business of Nomura Securities Co., Ltd., effective 1 February 2023.

2. Tokyo Stock Exchange (Prime Market, Standard market, Growth Market, and TOKYO PRO Market), Nagoya Stock Exchange, Sapporo Securities Exchange, and Fukuoka Stock Exchange.

Fig. 2: Russell/Nomura Japan Equity Indexes performance summary

As of end-May 2023

Price return (excluding dividends)

(Index)	No of stocks	Weight (%)	Index value	Returns (%) *				
				1 month	3 month	6 month	12 month	YTD
Total Market	1491	100.00	484.05	3.84	7.14	7.56	11.50	12.98
Value	1097	48.36	935.05	2.92	4.41	8.06	13.15	11.34
Growth	768	51.64	221.52	4.71	9.84	7.09	10.03	14.57
Large	299	85.70	465.78	4.50	7.95	8.22	11.50	14.03
Large Value	201	39.59	867.05	3.61	4.78	8.33	12.67	11.81
Large Growth	186	46.10	231.76	5.27	10.82	8.13	10.57	16.01
Top	60	52.72	379.19	5.45	9.03	9.27	11.44	15.21
Top Value	38	22.80	815.67	5.30	6.54	9.86	14.63	12.81
Top Growth	44	29.92	192.81	5.57	11.01	8.82	9.01	17.11
Mid	239	32.98	641.70	3.00	6.25	6.59	11.56	12.20
Mid Value	163	16.79	854.11	1.39	2.49	6.32	10.10	10.49
Mid Growth	142	16.18	343.11	4.72	10.47	6.87	13.48	14.03
Mid-Small	1431	47.28	627.15	2.09	5.11	5.71	11.54	10.60
Mid-Small Value	1059	25.56	948.00	0.89	2.59	6.51	11.86	10.06
Mid-Small Growth	724	21.72	296.97	3.54	8.25	4.79	11.48	11.24
Small	1192	14.30	587.70	0.06	2.58	3.74	11.45	7.08
Small Value	896	8.77	1053.17	-0.06	2.78	6.86	15.19	9.24
Small Growth	582	5.53	223.39	0.24	2.26	-0.86	6.05	3.81
Small Core	400	9.89	234.06	0.56	3.65	4.32	11.56	7.80
Small Core Value	285	5.80	323.84	0.60	3.82	7.53	15.58	10.07
Small Core Growth	216	4.09	96.70	0.49	3.42	0.08	6.31	4.73
Micro	792	4.41	274.26	-1.04	0.25	2.45	11.20	5.48
Micro Value	611	2.97	353.91	-1.32	0.80	5.58	14.44	7.67
Micro Growth	366	1.44	104.76	-0.47	-0.87	-3.42	5.31	1.27
Prime	996	98.02	1627.30	3.94	7.29	7.65	11.50	13.12
Prime Value	716	47.01	1872.76	3.05	4.52	8.11	13.10	11.42
Prime Growth	540	51.01	1304.42	4.77	9.97	7.23	10.08	14.74

Note: * Returns are not annualized.

Source: NFRC

Fig. 3: Russell/Nomura Japan Equity Indexes performance summary

As of end-May 2023

Total return (including dividends)

Index	No. of stocks	Weight (%)	Index value	Returns (%) *				
				1 month	3 months	6 months	12 months	YTD
Total Market	1491	100.00	905.52	3.88	8.45	9.09	14.52	14.41
Value	1097	48.36	1923.44	2.97	6.15	10.11	17.17	13.24
Growth	768	51.64	377.15	4.75	10.71	8.15	12.07	15.53
Large	299	85.70	875.20	4.54	9.26	9.74	14.52	15.45
Large Value	201	39.59	1800.09	3.65	6.55	10.39	16.76	13.73
Large Growth	186	46.10	397.59	5.31	11.71	9.19	12.64	16.98
Top	60	52.72	736.00	5.49	10.35	10.76	14.35	16.62
Top Value	38	22.80	1741.16	5.34	8.26	11.82	18.53	14.64
Top Growth	44	29.92	345.41	5.61	12.02	9.96	11.13	18.19
Mid	239	32.98	1155.96	3.04	7.55	8.16	14.78	13.63
Mid Value	163	16.79	1704.05	1.43	4.31	8.51	14.42	12.53
Mid Growth	142	16.18	554.29	4.76	11.16	7.79	15.44	14.81
Mid-Small	1431	47.28	1136.08	2.14	6.41	7.29	14.67	12.04
Mid-Small Value	1059	25.56	1885.31	0.95	4.35	8.62	15.98	12.02
Mid-Small Growth	724	21.72	479.65	3.59	8.96	5.74	13.39	12.05
Small	1192	14.30	1081.24	0.14	3.87	5.34	14.41	8.52
Small Value	896	8.77	2084.53	0.03	4.41	8.85	18.90	11.07
Small Growth	582	5.53	360.94	0.30	3.02	0.18	7.83	4.70
Small Core	400	9.89	349.18	0.61	4.92	5.87	14.42	9.21
Small Core Value	285	5.80	506.48	0.66	5.43	9.47	19.22	11.86
Small Core Growth	216	4.09	132.46	0.55	4.21	1.12	8.08	5.64
Micro	792	4.41	417.86	-0.91	1.58	4.16	14.36	7.01
Micro Value	611	2.97	568.46	-1.18	2.47	7.66	18.29	9.55
Micro Growth	366	1.44	140.49	-0.37	-0.21	-2.38	7.10	2.13
Prime	996	98.02	2542.93	3.98	8.59	9.17	14.51	14.54
Prime Value	716	47.01	3156.57	3.10	6.26	10.15	17.13	13.31
Prime Growth	540	51.01	1894.77	4.81	10.85	8.29	12.12	15.70

Note: * Returns are not annualized.

Source: NFRC

Fig. 4: Russell/Nomura index data by industrial sector

As of end-May 2023

Number of stocks and weighting

(Index)	Total Market		Value		Growth		Small		Prime	
	No of stocks	Weight (%)	No of stocks	Weight (%)	No of stocks	Weight (%)	No of stocks	Weight (%)	No of stocks	Weight (%)
Overall	1491	100.00	1097	100.00	768	100.00	1192	100.00	996	100.00
Fishery, agriculture & forestry	6	0.08	5	0.13	3	0.04	6	0.59	4	0.08
Mining	5	0.31	5	0.64	0	0.00	4	0.28	2	0.30
Construction	68	2.05	64	3.99	14	0.23	58	4.69	41	1.96
Foods	62	3.45	51	2.85	36	4.02	48	4.63	41	3.44
Textiles & apparel	19	0.42	17	0.68	5	0.18	18	1.69	11	0.39
Pulp & Paper	8	0.16	8	0.34	1	0.00	7	0.64	6	0.16
Chemicals	116	6.38	94	5.06	50	7.61	90	7.57	76	6.35
Pharmaceuticals	39	5.46	20	3.12	26	7.64	27	2.49	33	5.55
Oil & coal products	5	0.41	5	0.86	0	0.00	3	0.38	3	0.41
Rubber products	9	0.72	9	1.28	2	0.21	8	1.12	7	0.73
Glass & ceramics products	22	0.72	19	1.15	6	0.32	18	2.10	18	0.72
Iron and steel	16	0.77	16	1.59	1	0.01	14	1.57	12	0.77
Nonferrous Metals	19	0.69	17	1.34	4	0.08	16	1.87	14	0.68
Processed metals	21	0.50	20	0.80	6	0.22	18	1.64	15	0.49
Farm & industrial machinery	103	5.61	93	5.01	44	6.17	84	6.90	66	5.56
Electric Appliances	123	19.55	98	10.88	69	27.68	87	8.26	90	19.80
Transportation Equipment	43	6.36	41	11.18	8	1.85	29	2.08	32	6.45
precision equipment	26	2.73	17	0.47	16	4.84	20	2.07	19	2.76
Other products	35	2.40	22	0.95	20	3.75	29	2.19	24	2.40
Electricity and gas	20	1.24	18	2.52	3	0.04	12	1.35	19	1.26
Land transportation	41	2.93	37	3.25	26	2.63	22	1.90	31	2.95
Marine transportation	6	0.62	6	1.27	1	0.01	3	0.13	4	0.62
Air transportation	2	0.45	2	0.22	2	0.67	0	0.00	2	0.46
Warehousing & harbor transportation services	9	0.14	8	0.26	2	0.02	8	0.60	5	0.13
Information and communications	149	8.73	49	3.84	139	13.31	127	10.31	86	8.66
Wholesale Trade	101	6.23	92	10.91	35	1.85	90	7.30	59	6.16
Retail trade	130	4.18	79	2.02	90	6.21	109	8.55	86	4.08
Banks	65	5.91	65	12.20	1	0.02	53	5.02	48	5.95
Securities & commodity futures	18	0.66	14	1.27	6	0.09	15	0.82	10	0.65
Insurance	8	2.43	7	3.88	4	1.07	2	0.11	8	2.48
Other Financing Business	21	1.14	18	1.79	7	0.54	18	2.21	19	1.16
Real estate	45	1.80	34	2.58	25	1.08	34	1.92	27	1.77
Services	131	4.75	47	1.68	116	7.63	115	7.02	78	4.67

Source: NFRC

Fig. 5: Russell/Nomura index data by industrial sector

As of end-May 2023

Monthly return*

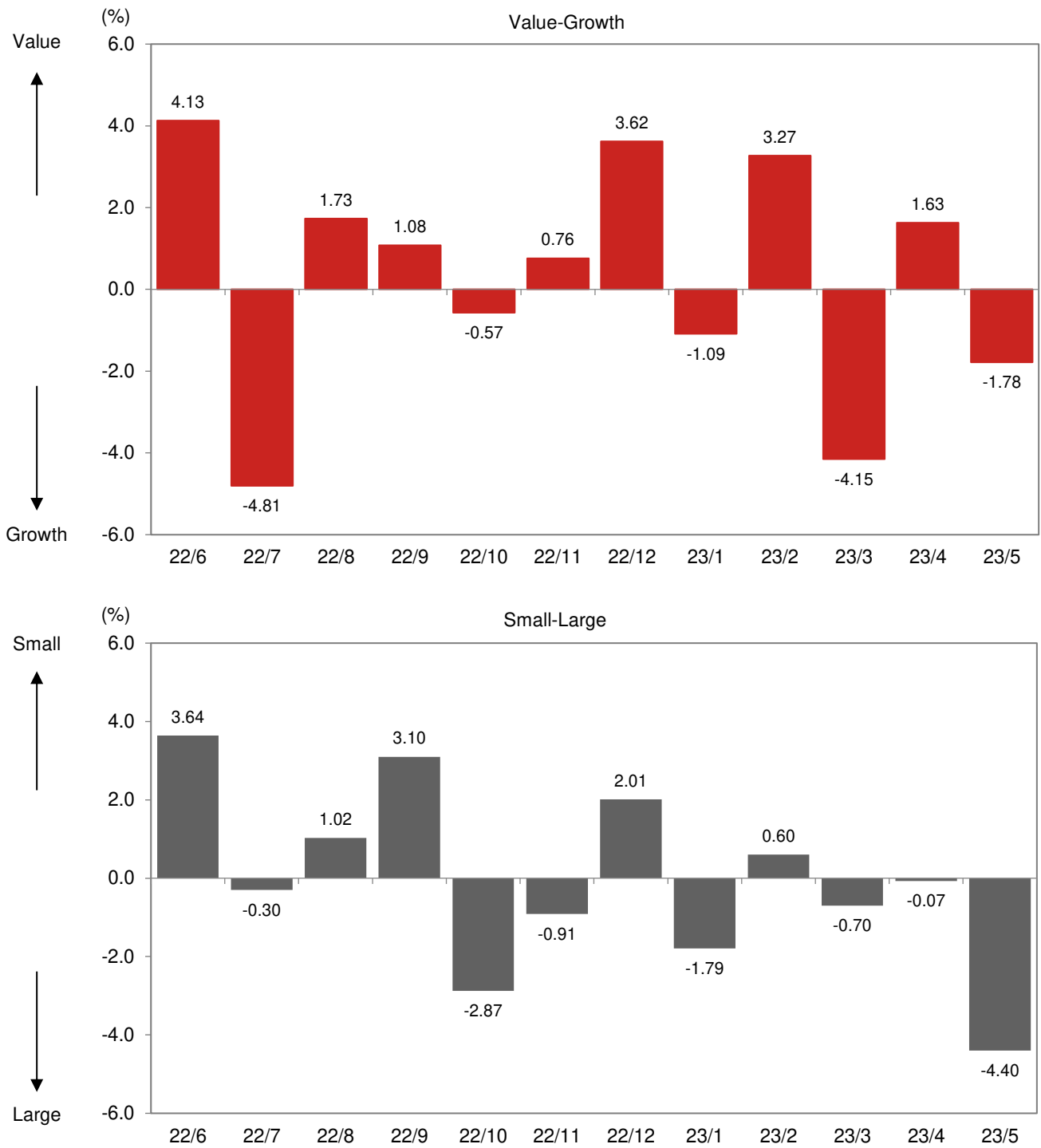
Index	Total Market		Value		Growth		Small		Prime	
	excl dividends	incl dividends	excl dividends	incl dividends	excl dividends	incl dividends	excl dividends	incl dividends	excl dividends	incl dividends
Total	3.84	3.88	2.92	2.97	4.71	4.75	0.06	0.14	3.94	3.98
Fishery, agriculture & forestry	0.29	0.63	1.31	1.62	-2.58	-2.17	0.29	0.63	0.70	1.13
Mining	-0.76	-0.66	-0.76	-0.66	-	-	-8.33	-7.64	-0.33	-0.25
Construction	1.43	1.53	1.78	1.86	-3.99	-3.65	0.67	0.89	1.52	1.59
Foods	0.58	0.63	1.89	1.94	-0.26	-0.22	0.74	0.86	0.64	0.69
Textiles & apparels	-5.13	-5.09	-4.91	-4.88	-5.92	-5.82	-5.98	-5.91	-5.13	-5.08
Pulp & paper	-1.16	-1.16	-1.16	-1.16	-2.99	-2.99	-2.63	-2.63	-1.28	-1.28
Chemicals	2.24	2.24	3.27	3.29	1.60	1.60	0.48	0.52	2.33	2.33
Pharmaceuticals	2.04	2.06	0.40	0.40	2.68	2.70	-2.61	-2.59	2.06	2.08
Oil & coal products	-4.88	-4.97	-4.88	-4.97	-	-	-8.04	-8.04	-4.97	-5.06
Rubber products	3.69	3.70	3.57	3.59	4.37	4.37	1.22	1.29	3.59	3.60
Glass & ceramics products	-1.50	-1.49	-1.58	-1.57	-1.22	-1.21	1.88	1.92	-1.52	-1.51
Iron & steel	-1.40	-1.38	-1.42	-1.39	0.44	0.44	2.01	2.12	-1.36	-1.33
Nonferrous metals	-5.57	-5.46	-5.82	-5.71	-1.28	-1.06	1.63	1.81	-5.59	-5.47
Metal products	-1.25	-1.13	-1.89	-1.79	1.00	1.19	3.91	4.16	-1.45	-1.33
Machinery	5.78	5.87	1.14	1.28	9.60	9.66	1.64	1.77	5.90	5.99
Electric appliances	9.77	9.79	8.45	8.43	10.27	10.30	1.03	0.96	9.86	9.88
Transportation equipment	4.44	4.62	4.60	4.79	3.52	3.66	1.56	1.77	4.45	4.64
Precision equipment	8.97	9.00	6.73	6.88	9.18	9.19	2.80	2.91	9.03	9.05
Other products	2.89	3.14	1.42	1.46	3.24	3.55	-2.41	-2.34	3.00	3.25
Electric power & gas	5.62	5.64	6.21	6.23	-20.08	-20.08	6.82	6.83	5.62	5.64
Land transportation	0.74	0.79	0.05	0.10	1.55	1.59	-1.91	-1.80	0.80	0.85
Marine transportation	-6.16	-6.27	-6.06	-6.17	-24.17	-23.77	-20.58	-20.34	-5.93	-6.04
Air transportation	3.93	4.02	3.70	3.82	4.01	4.09	-	-	3.93	4.02
Warehousing & harbor transportation services	-0.30	-0.17	-0.19	-0.05	-1.67	-1.67	-2.93	-2.86	-0.27	-0.15
Information & communication	1.04	1.06	3.39	3.40	0.42	0.45	2.21	2.24	1.01	1.04
Wholesale trade	5.17	5.19	6.00	6.03	0.78	0.79	0.68	0.81	5.37	5.39
Retail trade	-1.11	-1.07	-4.02	-3.97	-0.19	-0.15	-1.34	-1.30	-1.06	-1.02
Banks	3.87	3.92	3.88	3.93	-1.80	-1.80	0.10	0.16	3.99	4.04
Securities & commodity futures	-0.04	-0.03	-0.01	-0.01	-0.44	-0.33	-0.98	-0.94	0.04	0.04
Insurance	7.47	7.43	5.69	5.65	14.00	13.97	-10.93	-10.93	7.47	7.43
Other financing business	2.46	2.52	2.81	2.89	1.39	1.40	-0.94	-0.80	2.57	2.64
Real estate	-0.31	-0.26	0.01	0.09	-1.03	-1.02	-1.20	-1.10	-0.44	-0.38
Services	1.20	1.22	-8.74	-8.73	3.52	3.55	-3.98	-3.93	1.34	1.37

Note: * Returns are not annualized.

Source: NFRC

Fig. 6: Monthly performance

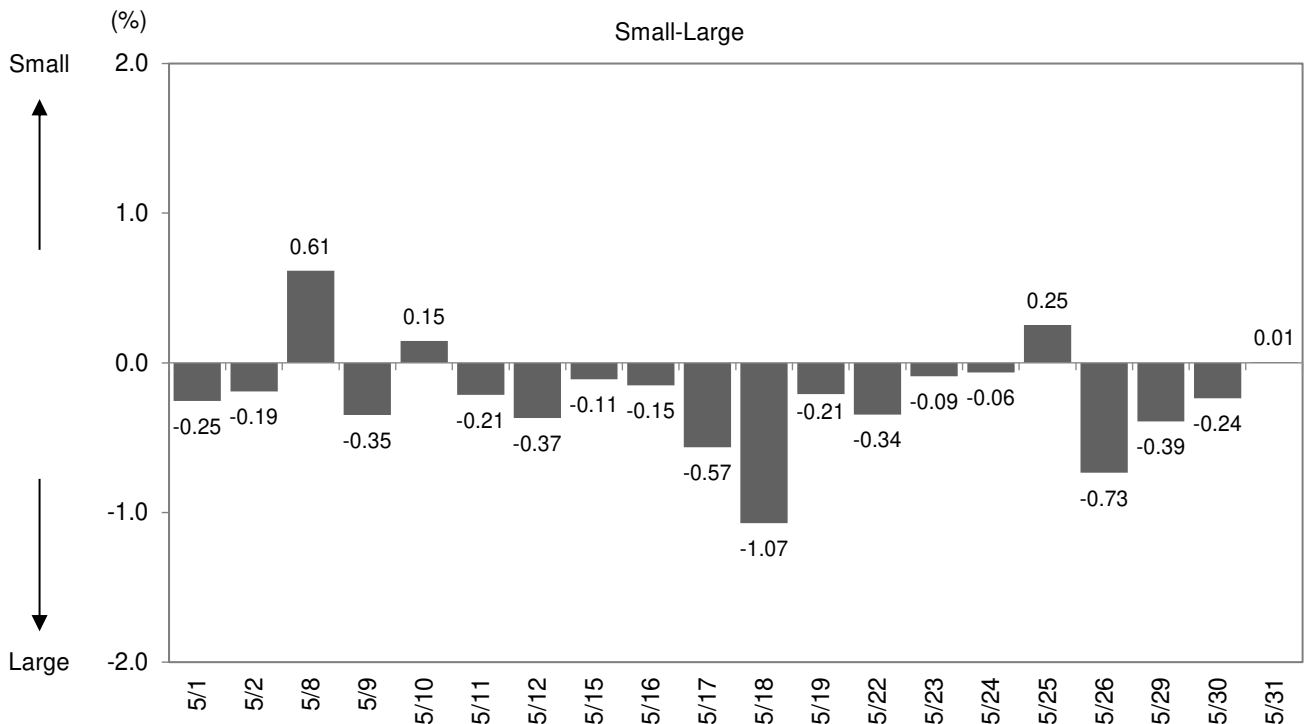
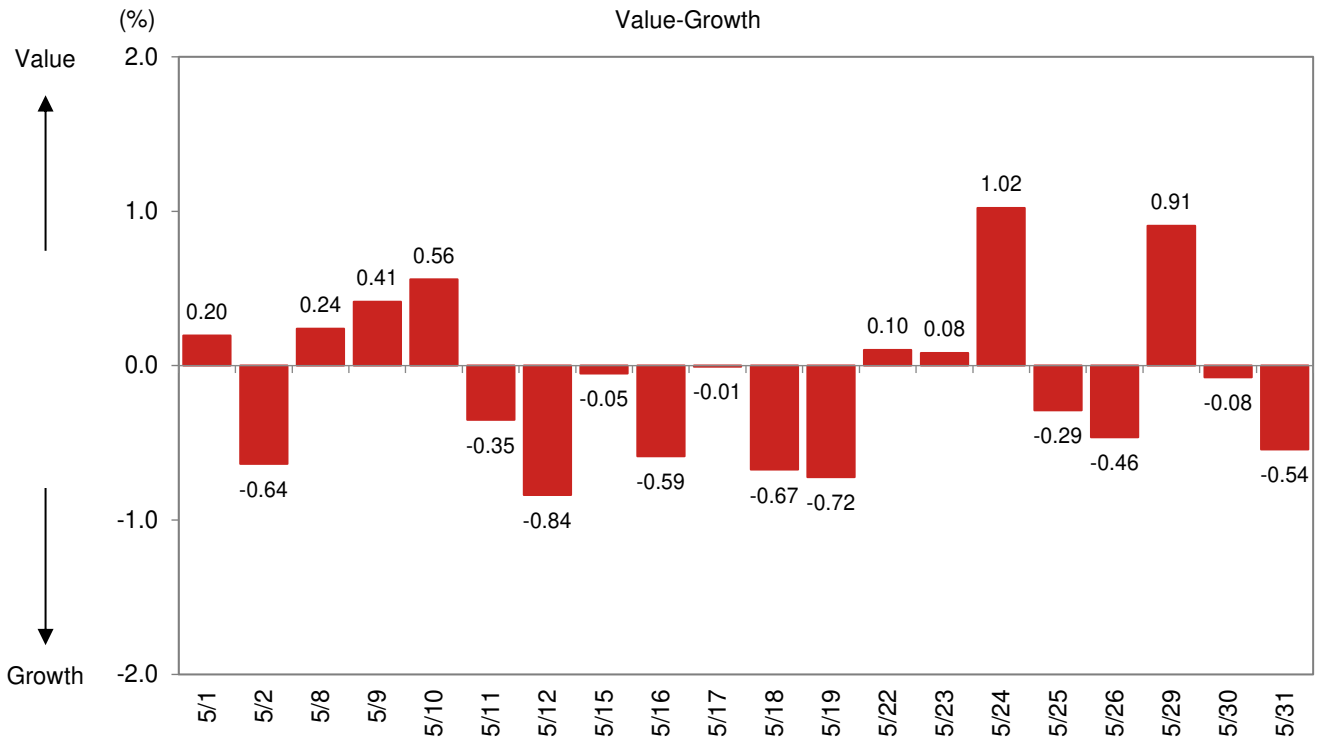
Total return



Note: Value-Growth is the difference between Value and Growth returns. Small-Large is the difference between Small and Large returns. Returns are not annualized.
Source: NFRC

Fig. 7: Daily performance

Total return



Note: Value-Growth is the difference between Value and Growth returns. Small-Large is the difference between Small and Large returns. Returns are not annualized.
Source: NFRC

Fig. 8: Russell/Nomura Japan Equity Indexes key indicators

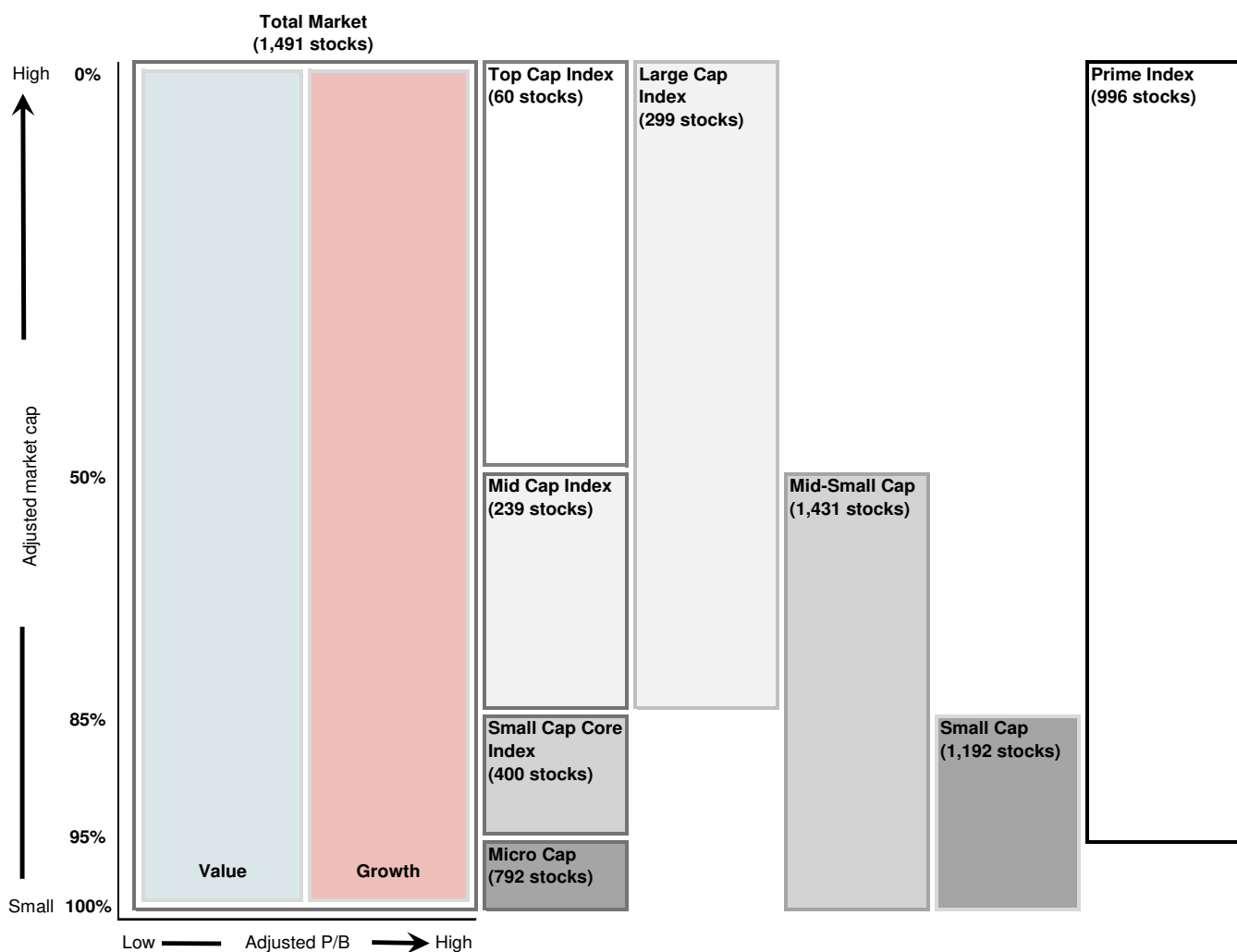
As of end-May 2023

Index	P/E (x)	P/B (x)	Dividend yield (%)	ROE (%)	Rec profit growth (%)
Total Market	14.34	1.23	2.46	8.82	7.76
Value	10.57	0.80	3.29	7.75	10.59
Growth	21.52	2.48	1.67	11.97	2.59
Large	14.45	1.29	2.44	9.24	6.80
Large Value	10.45	0.83	3.34	8.16	9.72
Large Growth	21.52	2.49	1.67	12.04	1.82
Top	15.32	1.42	2.44	9.58	6.54
Top Value	11.30	0.91	3.32	8.28	12.07
Top Growth	21.01	2.50	1.78	12.35	-0.60
Mid	13.24	1.13	2.43	8.79	7.13
Mid Value	9.47	0.74	3.36	8.04	7.32
Mid Growth	22.53	2.48	1.45	11.46	6.64
Mid-Small	13.39	1.07	2.47	8.18	8.89
Mid-Small Value	10.00	0.72	3.28	7.37	9.52
Mid-Small Growth	22.26	2.46	1.52	11.46	7.27
Small	13.73	0.94	2.57	7.01	13.39
Small Value	11.17	0.68	3.11	6.22	14.91
Small Growth	21.53	2.38	1.71	11.48	9.02
Small Core	13.96	1.00	2.53	7.32	19.95
Small Core Value	11.10	0.71	3.09	6.50	23.65
Small Core Growth	21.98	2.41	1.73	11.37	10.71
Micro	13.24	0.83	2.65	6.43	1.67
Micro Value	11.32	0.64	3.14	5.73	0.85
Micro Growth	20.35	2.30	1.65	11.78	4.83
Prime	14.38	1.24	2.45	8.89	8.00
Prime Value	10.57	0.81	3.30	7.82	11.05
Prime Growth	21.52	2.48	1.67	11.98	2.54

Note: All financial data are based on current-FY forecasts (with preference given to consolidated figures).

Source: NFRC

Fig. 9: Russell/Nomura Japan Equity Indexes



No. of stocks in each index is as of end-May 2023

Source: NFRC

All the indexes (Total Market, the capitalization indexes, Value, Growth, and Prime) also have indexes based on the 33 industrial sectors.

Divisions based on market cap exclude the value of stable shareholdings.

Value and Growth indexes are defined in terms of P/B ratios adjusted for unrealized gains/losses.

For composition rules and other information, please refer to Russell/Nomura Japan Equity Indexes rulebook.

Fig. 10: Russell/Nomura Japan Equity Indexes performance summary

As of end-May 2023

Price return (excluding dividends), US dollar basis

(Index)	No of stocks	Weight (%)	Index value	Returns (%) *				
				1 month	3 month	6 month	12 month	YTD
Total Market	1491	100.00	830.94	0.85	4.85	6.62	1.93	6.83
Value	1097	48.36	1605.14	-0.04	2.17	7.12	3.44	5.28
Growth	768	51.64	380.28	1.69	7.48	6.15	0.59	8.33
Large	299	85.70	799.57	1.49	5.63	7.28	1.93	7.82
Large Value	201	39.59	1488.42	0.62	2.54	7.39	2.99	5.73
Large Growth	186	46.10	397.85	2.24	8.45	7.18	1.08	9.69
Top	60	52.72	650.94	2.42	6.70	8.31	1.88	8.94
Top Value	38	22.80	1400.21	2.26	4.26	8.90	4.79	6.67
Top Growth	44	29.92	330.99	2.53	8.64	7.87	-0.35	10.73
Mid	239	32.98	1101.57	0.03	3.98	5.66	1.99	6.09
Mid Value	163	16.79	1466.19	-1.53	0.29	5.39	0.65	4.47
Mid Growth	142	16.18	589.00	1.70	8.10	5.93	3.74	7.82
Mid-Small	1431	47.28	1076.59	-0.85	2.86	4.79	1.96	4.58
Mid-Small Value	1059	25.56	1627.38	-2.01	0.39	5.58	2.26	4.07
Mid-Small Growth	724	21.72	509.79	0.56	5.93	3.87	1.91	5.18
Small	1192	14.30	1008.87	-2.82	0.38	2.83	1.89	1.25
Small Value	896	8.77	1807.92	-2.94	0.57	5.93	5.30	3.30
Small Growth	582	5.53	383.49	-2.65	0.07	-1.72	-3.06	-1.84
Small Core	400	9.89	170.96	-2.34	1.43	3.41	1.98	1.93
Small Core Value	285	5.80	236.54	-2.30	1.59	6.59	5.66	4.08
Small Core Growth	216	4.09	70.63	-2.40	1.20	-0.79	-2.81	-0.97
Micro	792	4.41	200.32	-3.89	-1.90	1.55	1.66	-0.26
Micro Value	611	2.97	258.50	-4.16	-1.36	4.66	4.62	1.80
Micro Growth	366	1.44	76.52	-3.33	-2.99	-4.26	-3.73	-4.24
Prime	996	98.02	1350.46	0.94	4.99	6.71	1.93	6.96
Prime Value	716	47.01	1554.16	0.09	2.28	7.16	3.40	5.35
Prime Growth	540	51.01	1082.50	1.75	7.62	6.29	0.63	8.49

Note: * Returns are not annualized.

Source: NFRC

Fig. 11: Russell/Nomura Japan Equity Indexes performance summary

As of end-May 2023

Total return (including dividends), US dollar basis

Index	No. of stocks	Weight (%)	Index value	Returns (%) *				
				1 month	3 months	6 months	12 months	YTD
Total Market	1491	100.00	1554.45	0.89	6.13	8.14	4.69	8.18
Value	1097	48.36	3301.84	0.01	3.88	9.15	7.11	7.07
Growth	768	51.64	647.43	1.74	8.34	7.20	2.45	9.24
Large	299	85.70	1502.40	1.53	6.91	8.79	4.69	9.16
Large Value	201	39.59	3090.11	0.66	4.27	9.43	6.74	7.54
Large Growth	186	46.10	682.52	2.28	9.32	8.24	2.97	10.61
Top	60	52.72	1263.44	2.46	7.99	9.79	4.53	10.27
Top Value	38	22.80	2988.94	2.31	5.94	10.84	8.36	8.40
Top Growth	44	29.92	592.94	2.57	9.62	9.00	1.59	11.76
Mid	239	32.98	1984.36	0.07	5.24	7.22	4.92	7.45
Mid Value	163	16.79	2925.24	-1.49	2.08	7.56	4.60	6.40
Mid Growth	142	16.18	951.52	1.75	8.77	6.85	5.53	8.56
Mid-Small	1431	47.28	1950.24	-0.80	4.13	6.35	4.83	5.94
Mid-Small Value	1059	25.56	3236.40	-1.96	2.11	7.68	6.02	5.92
Mid-Small Growth	724	21.72	823.39	0.61	6.63	4.82	3.66	5.95
Small	1192	14.30	1856.10	-2.75	1.64	4.42	4.59	2.62
Small Value	896	8.77	3578.38	-2.85	2.17	7.90	8.70	5.02
Small Growth	582	5.53	619.61	-2.58	0.81	-0.70	-1.43	-1.00
Small Core	400	9.89	255.05	-2.29	2.67	4.95	4.60	3.26
Small Core Value	285	5.80	369.94	-2.24	3.17	8.52	8.99	5.77
Small Core Growth	216	4.09	96.75	-2.35	1.98	0.23	-1.19	-0.11
Micro	792	4.41	305.21	-3.77	-0.60	3.25	4.55	1.19
Micro Value	611	2.97	415.21	-4.02	0.27	6.72	8.14	3.59
Micro Growth	366	1.44	102.62	-3.24	-2.35	-3.23	-2.09	-3.43
Prime	996	98.02	2110.31	0.99	6.26	8.22	4.68	8.30
Prime Value	716	47.01	2619.56	0.13	3.98	9.18	7.07	7.14
Prime Growth	540	51.01	1572.42	1.79	8.48	7.34	2.50	9.40

Note: * Returns are not annualized.

Source: NFRC

Data publication services

Data for the Russell/Nomura Japan Equity Indexes can be obtained via the following channels.³⁾

Index values are published in the following media:

- Bloomberg (RNJI)
- Jiji (RNSI/12400, RNSIIDV/12400)
- QUICK (NRIJ500–503, 510–517)
- Reuters (FRCNRI01, FRCNRI02, FRCNRI03, FRCNRI04, .JRNP, .JRNS)
- NFRC website (<http://qr.nomuraholdings.com/en/frcnri/index.html>)

Daily index values are published in the following media:

Russell/Nomura Prime Index:

- Bloomberg (RNPJ <Index>)
- Jiji (RNP/NOMURA)
- QUICK (140)

More detailed data:

More detailed data on index values and individual stock information can be obtained through Nomura Research Institute services Aurora, e-Aurora, and IDS.

For information, contact:

Nomura Research Institute
Investment Information Systems Business Department
e-mail: ids-sales@nri.co.jp

Other reports:

Russell/Nomura Japan Equity Indexes rulebook

Russell/Nomura Japan Equity Indexes handbook

Contact:

Nomura Fiduciary Research & Consulting Co., Ltd.

e-mail: idx_mgr@nfrco.jp

3. Published data are all for reference only.

Disclaimer

The intellectual property rights and any other rights in Russell/Nomura Japan Index belong to Nomura Fiduciary Research & Consulting Co., Ltd. ("NFRC") and Frank Russell Company ("Russell"). NFRC and Russell do not guarantee accuracy, completeness, reliability, usefulness, marketability, merchantability and fitness of the Index, and do not account for business activities or services that any index user and/or its affiliates undertakes with the use of the Index. Publication of the index could be delayed or canceled if a computer malfunction, natural disaster, or other unavoidable event affects the index calculation process.

Please read "About The Index License" before using the indexes, regardless of the channel through which indexes/data is acquired (NFRC website, services via information vendors, etc).

"About The Index License"

<http://qr.nomuraholdings.com/en/indexlicense.html>

This report was prepared by NFRC for information purposes only. Although this report is based upon sources we believe to be reliable, we do not guarantee its accuracy or completeness. Unless otherwise stated, all statements, figures, graphs and other information included in this report are as of the date of this report and are subject to change without notice. The contents of this report are not intended in any way to indicate or guarantee future investment results. Further, this report is not intended as a solicitation or recommendation with respect to the purchase or sale of any particular investment. If a customer invests in investment product that uses a market index developed or provided by NFRC, a portion of the index usage fee may be directly or indirectly attributable to NFRC. For more information on the market index of NFRC, please visit the following website.

Securities Market Benchmarks <http://qr.nomuraholdings.com/en/>

This report may not be copied, re-distributed or reproduced in whole or in part without the prior written approval of NFRC.

Nomura Fiduciary Research & Consulting Co., Ltd.

Registration Number: Director-General of the Kanto Local Financial Bureau (Finance & Commerce) Registration No.451

Membership: Japan Investment Advisers Association No. 011-00961