

## Russell/Nomura Japan Equity Indexes

EQUITY: INDEX SERVICES DEPARTMENT

### Performance summary

Research Analysts

[Japan index products](#)

Index Services Department - NFRC

idx\_mgr@nfrc.co.jp



Fig. 1: Russell/Nomura Japan Equity Indexes performance summary

As of end-August 2024

Total return (including dividends)

(Index)	No of stocks	Weight (%)	Index value	Returns (%) *				
				1-month	3 month	6 month	12 month	YTD
Total Market	1388	100.00	1181.59	-2.85	-1.68	2.91	19.31	16.27
Value	1010	47.71	2719.03	-5.02	-4.78	3.68	22.17	19.51
Growth	719	52.29	454.64	-0.79	1.33	2.22	16.55	13.46
Large	298	86.68	1148.51	-2.91	-1.95	2.91	20.25	17.19
Large Value	199	39.42	2568.02	-5.29	-5.32	3.39	22.92	20.66
Large Growth	192	47.26	483.49	-0.83	1.06	2.52	17.86	14.44
Top	50	50.93	986.05	-3.72	-3.13	1.92	23.55	19.51
Top Value	28	19.53	2538.73	-6.95	-7.65	1.10	25.13	24.37
Top Growth	38	31.40	431.78	-1.59	-0.08	2.42	22.22	16.65
Mid	248	35.75	1473.18	-1.73	-0.21	4.36	15.61	14.05
Mid Value	171	19.89	2368.65	-3.60	-2.92	5.74	20.41	17.23
Mid Growth	154	15.85	640.00	0.72	3.41	2.71	10.15	10.35
Mid-Small	1338	49.07	1442.90	-1.94	-0.13	3.96	15.04	13.12
Mid-Small Value	982	28.18	2598.26	-3.64	-2.68	5.55	19.86	16.38
Mid-Small Growth	681	20.89	549.19	0.45	3.51	1.93	9.03	9.05
Small	1090	13.32	1362.11	-2.50	0.08	2.92	13.70	10.72
Small Value	811	8.29	2825.28	-3.73	-2.08	5.09	18.79	14.41
Small Growth	527	5.03	402.95	-0.41	3.85	-0.44	5.74	5.15
Small Core	347	8.75	438.81	-2.61	0.10	3.56	13.54	11.19
Small Core Value	239	5.21	687.84	-3.95	-2.74	5.24	18.85	15.09
Small Core Growth	189	3.55	148.40	-0.56	4.57	1.19	6.10	5.90
Micro	743	4.57	529.68	-2.30	0.06	1.73	14.13	9.83
Micro Value	572	3.08	768.18	-3.36	-0.95	4.84	18.80	13.29
Micro Growth	338	1.48	155.56	-0.03	2.20	-4.04	4.92	3.43
Prime	992	98.31	3317.50	-2.85	-1.69	2.93	19.33	16.35
Prime Value	703	46.51	4461.48	-5.04	-4.85	3.63	22.12	19.61
Prime Growth	547	51.80	2286.33	-0.78	1.33	2.30	16.68	13.58

Note: \* Returns are not annualized.

Source: Nomura Fiduciary Research & Consulting Co., Ltd. (NFRC)

For composition rules, please refer to Russell/Nomura Japan Equity Indexes rulebook.

Fig. 2: Russell/Nomura Japan Equity Indexes performance summary

As of end-August 2024

Price return (excluding dividends)

(Index)	No of stocks	Weight (%)	Index value	Returns (%) *				
				1 month	3 month	6 month	12 month	YTD
Total Market	1388	100.00	616.60	-2.88	-1.82	1.74	16.65	14.91
Value	1010	47.71	1283.15	-5.04	-4.92	2.20	18.80	17.76
Growth	719	52.29	262.18	-0.82	1.18	1.34	14.59	12.44
Large	298	86.68	596.95	-2.93	-2.08	1.78	17.61	15.87
Large Value	199	39.42	1201.11	-5.30	-5.46	1.94	19.55	18.94
Large Growth	192	47.26	276.74	-0.85	0.93	1.65	15.89	13.44
Top	50	50.93	496.65	-3.73	-3.21	0.85	20.92	18.24
Top Value	28	19.53	1155.86	-6.97	-7.73	-0.27	21.77	22.66
Top Growth	38	31.40	236.70	-1.60	-0.16	1.56	20.16	15.64
Mid	248	35.75	797.60	-1.76	-0.43	3.13	12.98	12.66
Mid Value	171	19.89	1151.90	-3.61	-3.11	4.22	17.08	15.50
Mid Growth	154	15.85	388.89	0.67	3.16	1.83	8.32	9.37
Mid-Small	1338	49.07	776.44	-1.98	-0.34	2.68	12.36	11.67
Mid-Small Value	982	28.18	1267.36	-3.66	-2.86	3.98	16.51	14.60
Mid-Small Growth	681	20.89	333.67	0.39	3.28	1.02	7.19	8.01
Small	1090	13.32	720.68	-2.56	-0.11	1.51	10.89	9.10
Small Value	811	8.29	1383.77	-3.78	-2.26	3.43	15.37	12.52
Small Growth	527	5.03	244.48	-0.48	3.64	-1.46	3.88	3.96
Small Core	347	8.75	286.49	-2.66	-0.08	2.19	10.80	9.63
Small Core Value	239	5.21	426.52	-4.00	-2.91	3.62	15.47	13.24
Small Core Growth	189	3.55	106.22	-0.63	4.39	0.17	4.24	4.73
Micro	743	4.57	338.02	-2.37	-0.17	0.24	11.20	8.12
Micro Value	572	3.08	463.34	-3.42	-1.15	3.11	15.30	11.32
Micro Growth	338	1.48	113.67	-0.14	1.92	-5.08	3.08	2.20
Prime	992	98.31	2072.61	-2.87	-1.83	1.76	16.68	15.00
Prime Value	703	46.51	2569.69	-5.06	-4.99	2.16	18.75	17.87
Prime Growth	547	51.80	1545.32	-0.81	1.19	1.42	14.72	12.56

Note: \* Returns are not annualized.

Source: NFRC

Fig. 3: Russell/Nomura Japan Equity Indexes performance summary

As of end-August 2024

Total return (including dividends)

Index	No. of stocks	Weight (%)	Index value	Returns (%) *				
				1 month	3 months	6 months	12 months	YTD
Total Market	1388	100.00	1181.59	-2.85	-1.68	2.91	19.31	16.27
Value	1010	47.71	2719.03	-5.02	-4.78	3.68	22.17	19.51
Growth	719	52.29	454.64	-0.79	1.33	2.22	16.55	13.46
Large	298	86.68	1148.51	-2.91	-1.95	2.91	20.25	17.19
Large Value	199	39.42	2568.02	-5.29	-5.32	3.39	22.92	20.66
Large Growth	192	47.26	483.49	-0.83	1.06	2.52	17.86	14.44
Top	50	50.93	986.05	-3.72	-3.13	1.92	23.55	19.51
Top Value	28	19.53	2538.73	-6.95	-7.65	1.10	25.13	24.37
Top Growth	38	31.40	431.78	-1.59	-0.08	2.42	22.22	16.65
Mid	248	35.75	1473.18	-1.73	-0.21	4.36	15.61	14.05
Mid Value	171	19.89	2368.65	-3.60	-2.92	5.74	20.41	17.23
Mid Growth	154	15.85	640.00	0.72	3.41	2.71	10.15	10.35
Mid-Small	1338	49.07	1442.90	-1.94	-0.13	3.96	15.04	13.12
Mid-Small Value	982	28.18	2598.26	-3.64	-2.68	5.55	19.86	16.38
Mid-Small Growth	681	20.89	549.19	0.45	3.51	1.93	9.03	9.05
Small	1090	13.32	1362.11	-2.50	0.08	2.92	13.70	10.72
Small Value	811	8.29	2825.28	-3.73	-2.08	5.09	18.79	14.41
Small Growth	527	5.03	402.95	-0.41	3.85	-0.44	5.74	5.15
Small Core	347	8.75	438.81	-2.61	0.10	3.56	13.54	11.19
Small Core Value	239	5.21	687.84	-3.95	-2.74	5.24	18.85	15.09
Small Core Growth	189	3.55	148.40	-0.56	4.57	1.19	6.10	5.90
Micro	743	4.57	529.68	-2.30	0.06	1.73	14.13	9.83
Micro Value	572	3.08	768.18	-3.36	-0.95	4.84	18.80	13.29
Micro Growth	338	1.48	155.56	-0.03	2.20	-4.04	4.92	3.43
Prime	992	98.31	3317.50	-2.85	-1.69	2.93	19.33	16.35
Prime Value	703	46.51	4461.48	-5.04	-4.85	3.63	22.12	19.61
Prime Growth	547	51.80	2286.33	-0.78	1.33	2.30	16.68	13.58

Note: \* Returns are not annualized.

Source: NFRC

Fig. 4: Russell/Nomura index data by industrial sector

As of end-August 2024

Number of stocks and weighting

Index	Total Market		Value		Growth		Small		Prime	
	No of stocks	Weight	No of stocks	Weight	No of stocks	Weight	No of stocks	Weight	No of stocks	Weight
Overall	1388	100.00	1010	100.00	719	100.00	1090	100.00	992	100.00
Fishery, agriculture & forestry	6	0.08	5	0.15	3	0.02	6	0.61	4	0.07
Mining	6	0.35	6	0.74	1	0.01	5	0.38	3	0.34
Construction	64	2.14	60	4.09	22	0.37	54	5.17	42	2.07
Foods	59	3.10	47	2.17	34	3.95	46	4.91	41	3.09
Textiles and apparel	18	0.36	16	0.64	3	0.11	17	1.62	13	0.34
Pulp and paper	8	0.15	8	0.32	0	0.00	7	0.66	6	0.15
Chemicals	101	5.84	79	4.47	48	7.09	76	7.31	75	5.83
Pharmaceuticals	32	5.05	22	2.89	19	7.02	21	2.34	28	5.11
Oil and coal products	4	0.57	4	1.20	0	0.00	1	0.06	4	0.58
Rubber products	10	0.60	10	1.06	3	0.19	8	0.84	8	0.60
Glass and ceramics products	23	0.71	21	1.20	9	0.26	18	2.06	17	0.69
Iron & steel	20	0.82	20	1.70	1	0.01	17	1.31	11	0.79
Nonferrous metals	18	0.78	16	1.55	4	0.07	15	2.68	15	0.78
Metal products	21	0.47	21	0.75	7	0.21	17	1.32	15	0.45
Machinery	101	5.44	83	4.32	53	6.46	81	6.85	68	5.36
Electric appliances	123	18.61	90	8.61	73	27.74	86	7.60	94	18.83
Transportation equipment	41	6.39	40	9.21	7	3.81	27	2.04	33	6.46
Precision equipments	24	2.57	15	0.38	15	4.57	18	2.03	18	2.58
Other products	32	2.45	21	1.01	19	3.77	26	2.23	25	2.46
Electricity and gas	20	1.38	20	2.88	2	0.01	12	1.49	17	1.39
Land transportation	36	2.24	31	3.32	22	1.26	20	2.87	32	2.25
Marine transportation	6	0.85	6	1.77	0	0.00	3	0.16	4	0.85
Airlines	3	0.34	2	0.27	3	0.40	1	0.03	2	0.34
Warehousing & harbor transportation services	8	0.14	8	0.28	1	0.01	8	1.03	5	0.12
Information and communications	123	7.88	37	3.94	107	11.48	100	9.26	84	7.85
Wholesale trade	101	6.91	88	9.85	45	4.22	87	6.47	60	6.84
Retail trade	123	4.03	65	2.22	88	5.68	106	9.28	85	3.94
Banks	66	7.38	66	15.39	2	0.07	52	5.71	51	7.44
Securities & commodity futures	19	0.86	14	1.68	7	0.11	16	1.06	11	0.84
Insurance	9	3.30	8	4.55	4	2.17	3	0.19	8	3.36
Other financing business	19	1.28	16	2.08	4	0.56	15	1.83	18	1.30
Real estate	43	2.02	32	3.29	26	0.85	32	1.91	27	1.98
Services	101	4.90	33	2.01	87	7.53	89	6.75	68	4.87

Source: NFRC

Fig. 5: Russell/Nomura index data by industrial sector

As of end-August 2024

Monthly return\*

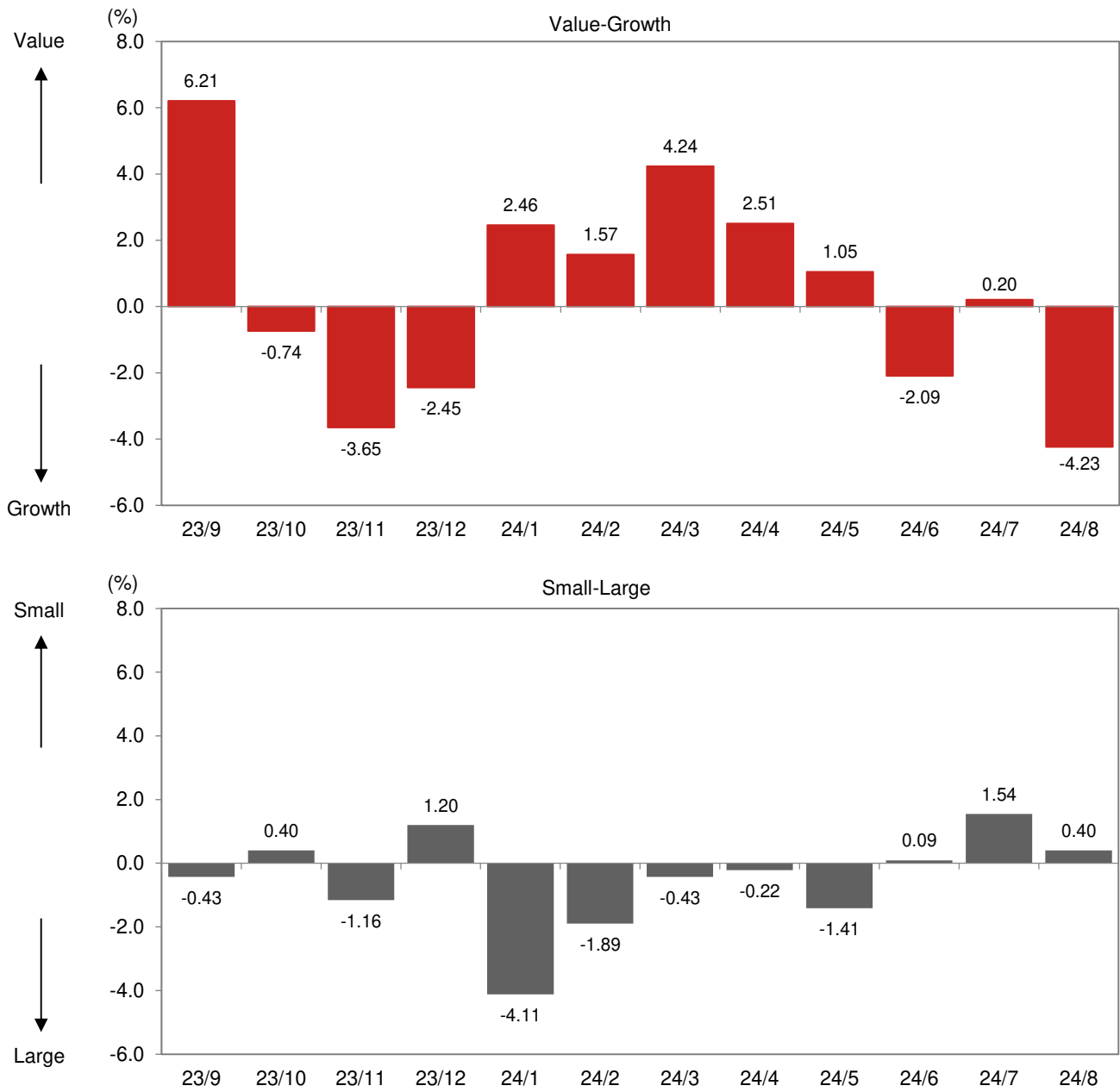
Index	Total Market		Value		Growth		Small		Prime	
	excl	incl	excl	incl	excl	incl	excl	incl	excl	incl
Total	-2.88	-2.85	-5.04	-5.02	-0.82	-0.79	-2.56	-2.50	-2.87	-2.85
Fishery, agriculture & forestry	-1.38	-1.38	-1.47	-1.47	-0.55	-0.55	-1.38	-1.38	-1.45	-1.45
Mining	-6.69	-6.51	-6.69	-6.50	-7.02	-7.02	-6.47	-6.47	-6.75	-6.56
Construction	-2.02	-2.01	-1.97	-1.97	-2.60	-2.48	-3.85	-3.81	-1.94	-1.93
Foods	-5.05	-5.04	-3.31	-3.29	-5.90	-5.90	-5.46	-5.44	-5.08	-5.08
Textiles & apparel	-2.74	-2.70	-3.37	-3.33	0.88	0.88	-1.55	-1.48	-2.84	-2.80
Pulp & paper	-1.70	-1.70	-1.70	-1.70	-	-	3.90	3.90	-1.53	-1.53
Chemicals	-3.76	-3.76	-1.63	-1.63	-4.95	-4.95	-3.97	-3.97	-3.78	-3.78
Pharmaceuticals	2.97	2.98	3.67	3.68	2.71	2.72	-1.63	-1.54	3.00	3.01
Oil & coal products	1.03	1.03	1.03	1.03	-	-	2.69	2.69	1.03	1.03
Rubber products	-7.76	-7.75	-7.74	-7.73	-7.81	-7.81	-7.91	-7.91	-7.86	-7.85
Glass & ceramic products	-4.74	-4.74	-6.10	-6.10	1.38	1.38	-3.67	-3.67	-4.68	-4.68
Iron & steel	-2.85	-2.85	-2.90	-2.90	4.39	4.39	-4.40	-4.40	-2.77	-2.77
Nonferrous metals	2.23	2.23	1.79	1.79	11.79	11.79	8.90	8.90	2.25	2.25
Metal products	-10.13	-10.07	-11.76	-11.69	-4.47	-4.44	-3.96	-3.93	-10.45	-10.40
Machinery	-6.36	-6.36	-3.86	-3.85	-7.83	-7.83	-3.92	-3.90	-6.41	-6.40
Electric appliances	-1.08	-1.07	-1.85	-1.84	-0.86	-0.85	-2.86	-2.84	-1.07	-1.06
Transportation equipment	-5.98	-5.98	-5.96	-5.96	-6.02	-6.02	-5.11	-5.11	-5.95	-5.95
Precision equipment	3.50	3.51	-6.50	-6.50	4.34	4.35	-6.92	-6.85	3.58	3.60
Other products	-1.56	-1.56	2.58	2.58	-2.52	-2.52	-0.45	-0.42	-1.55	-1.55
Electric power & gas	0.47	0.47	0.45	0.45	5.11	5.11	-2.76	-2.76	0.41	0.41
Land transportation	-1.84	-1.84	-2.29	-2.29	-0.76	-0.76	-1.28	-1.28	-1.85	-1.85
Marine transportation	3.25	3.25	3.25	3.25	-	-	0.03	0.03	3.29	3.29
Air transportation	1.08	1.08	0.77	0.77	1.27	1.27	-6.31	-6.31	1.16	1.16
Warehousing & harbor transportation services	-2.42	-2.42	-2.64	-2.64	5.24	5.24	-2.42	-2.42	-1.86	-1.86
Information & communication	1.51	1.51	-5.87	-5.87	4.05	4.06	4.62	4.63	1.53	1.54
Wholesale trade	-5.87	-5.86	-7.37	-7.36	-2.49	-2.48	-3.33	-3.25	-5.94	-5.94
Retail trade	3.33	3.76	-2.13	-1.47	5.43	5.77	-2.50	-2.20	3.56	4.00
Banks	-11.84	-11.83	-11.91	-11.91	6.02	6.02	-10.10	-10.10	-11.84	-11.84
Securities & commodity futures	-10.68	-10.68	-10.83	-10.83	-8.53	-8.60	-8.13	-8.14	-10.69	-10.69
Insurance	-7.88	-7.88	-7.46	-7.46	-8.66	-8.66	1.75	1.75	-7.88	-7.88
Other financing business	-3.13	-3.10	-2.62	-2.59	-4.82	-4.82	-5.94	-5.80	-3.11	-3.09
Real estate	-1.42	-1.40	-1.75	-1.73	-0.25	-0.23	-1.41	-1.25	-1.34	-1.32
Services	1.62	1.65	-1.97	-1.95	2.54	2.57	1.23	1.33	1.62	1.65

Note: \* Returns are not annualized.

Source: NFRC

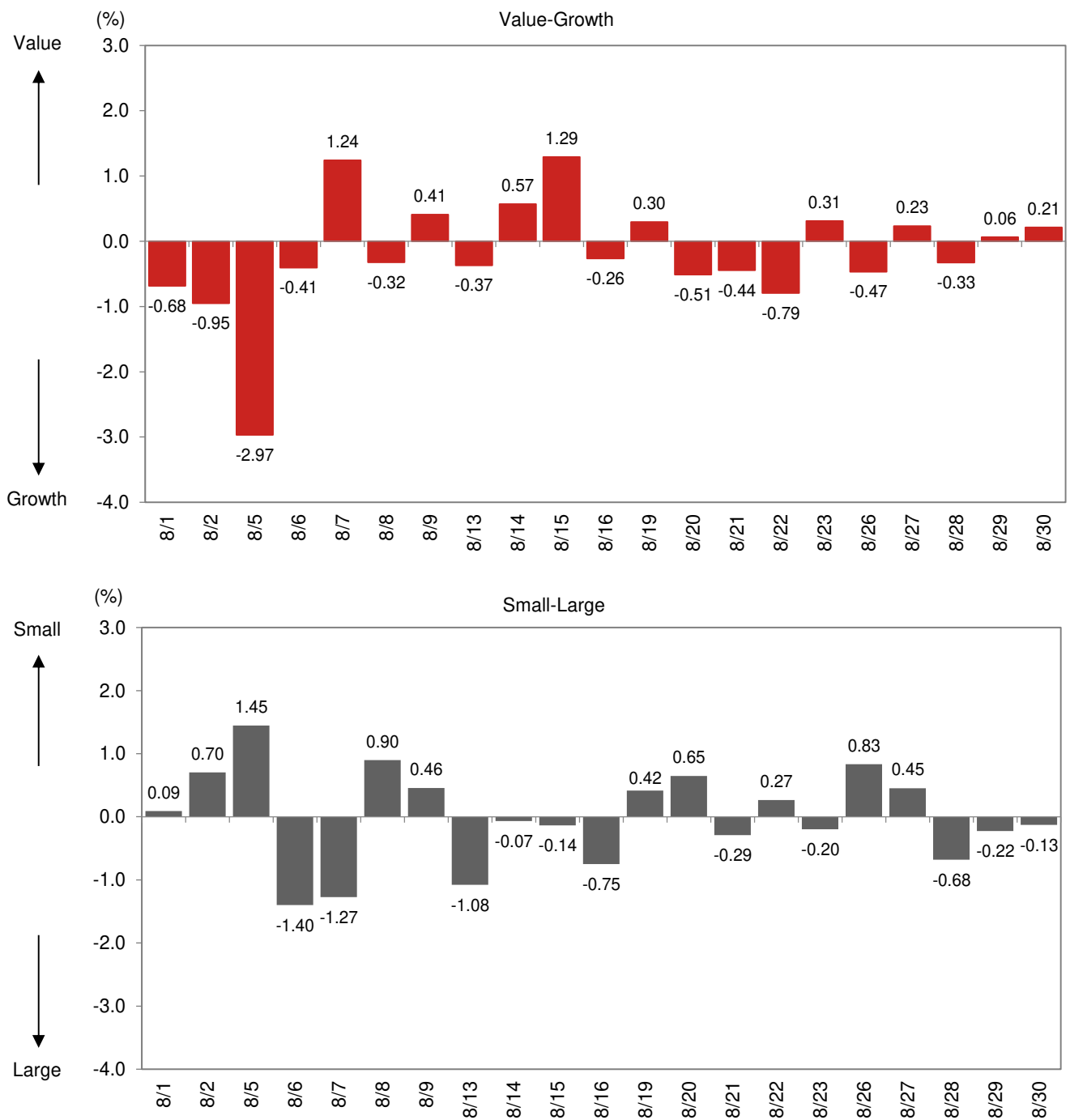
**Fig. 6: Monthly performance**

Total return



Note: Value-Growth is the difference between Value and Growth returns. Small-Large is the difference between Small and Large returns. Returns are not annualized.  
Source: NFRC

Fig. 7: Daily performance



Note: Value-Growth is the difference between Value and Growth returns. Small-Large is the difference between Small and Large returns. Returns are not annualized.  
Source: NFRC

Fig. 8: Russell/Nomura Japan Equity Indexes key indicators

As of end-August 2024

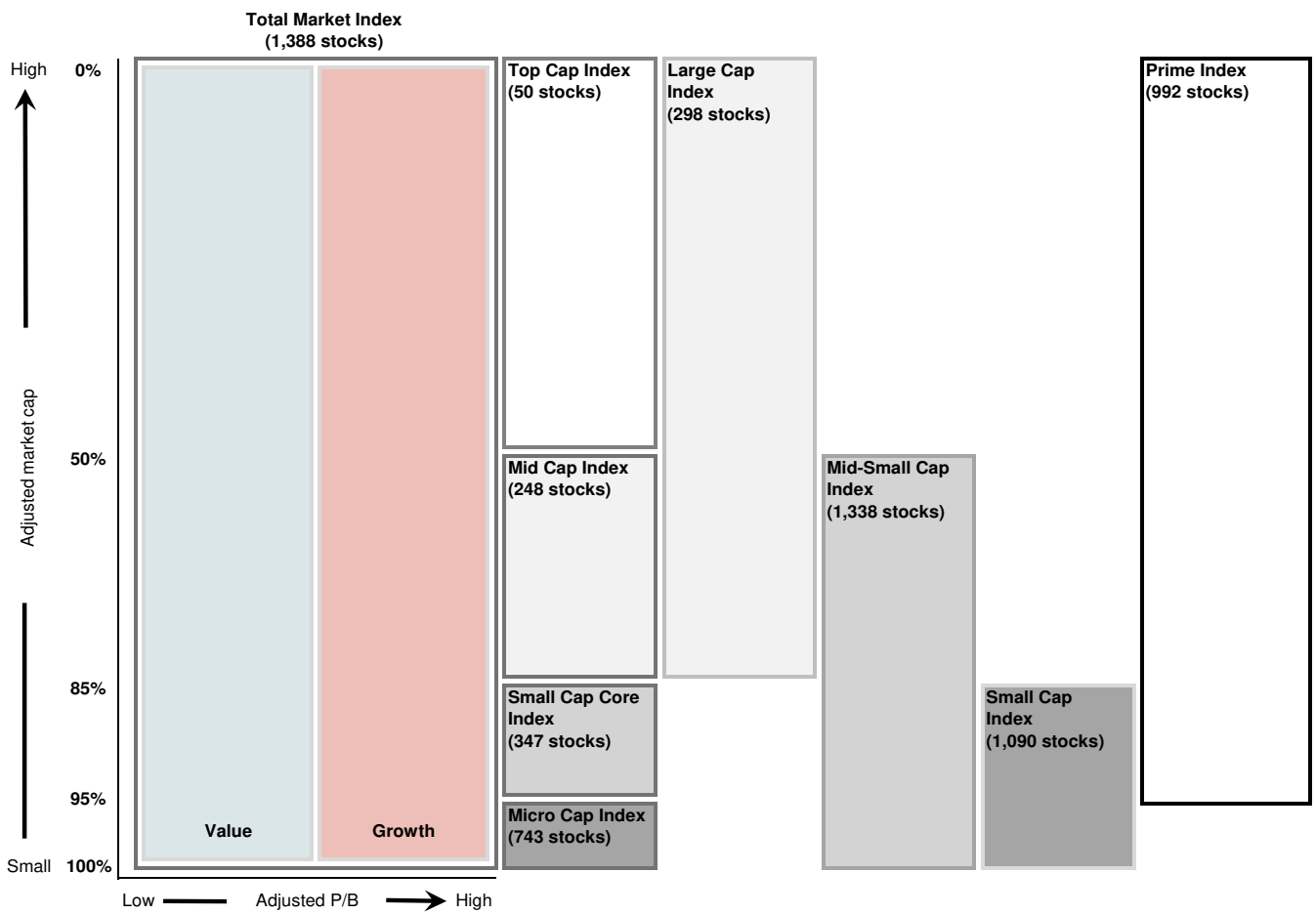
Index	P/E (x)	P/B (x)	Dividend yield (%)	ROE (%)	Rec profit growth (%)
Total Market	15.66	1.36	2.36	8.94	9.50
Value	12.09	0.90	3.04	7.65	8.42
Growth	21.41	2.52	1.74	12.25	11.35
Large	15.92	1.42	2.32	9.20	9.54
Large Value	12.07	0.93	3.05	7.91	8.77
Large Growth	21.68	2.54	1.72	12.18	10.76
Top	17.01	1.60	2.26	9.73	8.32
Top Value	12.81	0.99	3.09	7.91	7.23
Top Growth	21.38	2.62	1.75	12.76	9.52
Mid	14.58	1.22	2.41	8.63	11.00
Mid Value	11.43	0.88	3.01	7.90	10.12
Mid Growth	22.29	2.39	1.66	11.13	13.28
Mid-Small	14.46	1.17	2.46	8.34	10.53
Mid-Small Value	11.64	0.85	3.00	7.50	9.17
Mid-Small Growth	21.45	2.39	1.72	11.55	14.10
Small	14.15	1.06	2.58	7.67	9.28
Small Value	12.20	0.79	2.98	6.63	6.68
Small Growth	19.19	2.37	1.92	12.87	16.40
Small Core	14.46	1.11	2.52	7.88	8.98
Small Core Value	12.25	0.81	2.94	6.78	5.63
Small Core Growth	19.65	2.40	1.90	12.73	17.42
Micro	13.59	0.97	2.70	7.32	9.80
Micro Value	12.12	0.76	3.06	6.40	8.44
Micro Growth	18.17	2.30	1.97	13.21	14.20
Prime	15.72	1.37	2.35	8.97	9.58
Prime Value	12.12	0.91	3.03	7.69	8.50
Prime Growth	21.45	2.52	1.74	12.23	11.39

Note: All financial data are based on current-FY forecasts (with preference given to consolidated figures).

Source: NFRC



**Fig. 9: Russell/Nomura Japan Equity Indexes**



No. of stocks in each index is as of end-August 2024

Source: NFRC

All the indexes (Total Market, the capitalization indexes, Value and Growth indexes, and Prime) also have indexes based on the 33 industrial sectors.

Divisions based on market cap exclude the value of stable shareholdings.

Value and Growth indexes are defined in terms of P/B ratios adjusted for unrealized gains/losses.

Fig. 10: Russell/Nomura Japan Equity Indexes performance summary

As of end-August 2024

Price return (excluding dividends), US dollar basis

(Index)	No of stocks	Weight (%)	Index value	Returns (%) *				
				1 month	3 month	6 month	12 month	YTD
Total Market	1388	100.00	1020.61	1.13	6.45	5.07	17.44	12.10
Value	1010	47.71	2123.90	-1.13	3.09	5.54	19.60	14.89
Growth	719	52.29	433.96	3.27	9.71	4.66	15.36	9.70
Large	298	86.68	988.09	1.08	6.17	5.11	18.41	13.04
Large Value	199	39.42	1988.10	-1.40	2.51	5.28	20.36	16.04
Large Growth	192	47.26	458.07	3.24	9.43	4.98	16.67	10.67
Top	50	50.93	822.07	0.24	4.95	4.15	21.74	15.35
Top Value	28	19.53	1913.21	-3.13	0.04	2.99	22.59	19.67
Top Growth	38	31.40	391.79	2.45	8.25	4.88	20.97	12.82
Mid	248	35.75	1320.21	2.29	7.96	6.50	13.74	9.92
Mid Value	171	19.89	1906.66	0.36	5.05	7.62	17.87	12.68
Mid Growth	154	15.85	643.70	4.82	11.86	5.16	9.05	6.70
Mid-Small	1338	49.07	1285.18	2.06	8.06	6.04	13.11	8.95
Mid-Small Value	982	28.18	2097.77	0.31	5.32	7.38	17.29	11.80
Mid-Small Growth	681	20.89	552.30	4.53	11.98	4.32	7.91	5.37
Small	1090	13.32	1192.88	1.45	8.31	4.83	11.63	6.44
Small Value	811	8.29	2290.45	0.18	5.97	6.81	16.14	9.77
Small Growth	527	5.03	404.67	3.62	12.37	1.76	4.58	1.42
Small Core	347	8.75	201.77	1.35	8.34	5.53	11.54	6.95
Small Core Value	239	5.21	300.39	-0.04	5.26	7.01	16.24	10.48
Small Core Growth	189	3.55	74.81	3.47	13.19	3.45	4.94	2.17
Micro	743	4.57	238.06	1.65	8.25	3.52	11.95	5.48
Micro Value	572	3.08	326.32	0.56	7.18	6.48	16.08	8.60
Micro Growth	338	1.48	80.05	3.98	10.51	-1.97	3.77	-0.30
Prime	992	98.31	1658.48	1.13	6.44	5.09	17.46	12.19
Prime Value	703	46.51	2056.23	-1.15	3.01	5.50	19.55	14.99
Prime Growth	547	51.80	1236.54	3.28	9.72	4.74	15.49	9.81

Note: \* Returns are not annualized.

Source: NFRC

Fig. 11: Russell/Nomura Japan Equity Indexes performance summary

As of end-August 2024

Total return (including dividends), US dollar basis

Index	No. of stocks	Weight (%)	Index value	Returns (%) *				
				1 month	3 months	6 months	12 months	YTD
Total Market	1388	100.00	1955.80	1.15	6.60	6.28	20.11	13.43
Value	1010	47.71	4500.60	-1.11	3.25	7.07	23.00	16.60
Growth	719	52.29	752.53	3.30	9.86	5.57	17.33	10.69
Large	298	86.68	1901.05	1.10	6.32	6.28	21.06	14.33
Large Value	199	39.42	4250.64	-1.38	2.65	6.77	23.74	17.72
Large Growth	192	47.26	800.28	3.26	9.58	5.87	18.66	11.65
Top	50	50.93	1632.14	0.25	5.03	5.25	24.38	16.60
Top Value	28	19.53	4202.17	-3.11	0.13	4.41	25.97	21.34
Top Growth	38	31.40	714.69	2.46	8.34	5.77	23.04	13.80
Mid	248	35.75	2438.45	2.32	8.20	7.77	16.39	11.27
Mid Value	171	19.89	3920.66	0.38	5.26	9.20	21.22	14.37
Mid Growth	154	15.85	1059.34	4.88	12.12	6.07	10.89	7.66
Mid-Small	1338	49.07	2388.33	2.10	8.28	7.36	15.81	10.36
Mid-Small Value	982	28.18	4300.71	0.33	5.52	9.00	20.67	13.54
Mid-Small Growth	681	20.89	909.04	4.59	12.23	5.26	9.77	6.39
Small	1090	13.32	2254.60	1.52	8.51	6.29	14.46	8.02
Small Value	811	8.29	4676.47	0.23	6.17	8.53	19.59	11.62
Small Growth	527	5.03	666.98	3.70	12.60	2.81	6.45	2.59
Small Core	347	8.75	309.04	1.41	8.53	6.95	14.31	8.48
Small Core Value	239	5.21	484.43	0.01	5.45	8.69	19.65	12.28
Small Core Growth	189	3.55	104.52	3.54	13.38	4.49	6.82	3.32
Micro	743	4.57	373.04	1.73	8.49	5.05	14.90	7.15
Micro Value	572	3.08	541.02	0.62	7.40	8.27	19.60	10.53
Micro Growth	338	1.48	109.56	4.09	10.81	-0.90	5.62	0.91
Prime	992	98.31	2654.61	1.16	6.59	6.29	20.13	13.51
Prime Value	703	46.51	3570.01	-1.13	3.17	7.02	22.94	16.69
Prime Growth	547	51.80	1829.49	3.31	9.87	5.65	17.46	10.80

Note: \* Returns are not annualized.

Source: NFRC

# Data publication services

Data for the Russell/Nomura Japan Equity Indexes can be obtained via the following channels.<sup>[1]</sup>

---

## Index values are published in the following media:

- Bloomberg (RNJI)
- Jiji (RNSI/12400, RNSIIDV/12400)
- QUICK (NRIJ500–503, 510–517)
- Refinitiv (FRCNRI01, FRCNRI02, FRCNRI03, FRCNRI04, .JRNP, .JRNS)
- Website (<http://qr.nomuraholdings.com/en/frcnri/index.html> )

---

## More detailed data:

More detailed data on index values and individual stock information can be obtained through Nomura Research Institute services Aurora, e-Aurora, and IDS. For information, contact:

Nomura Research Institute  
Investment Information Systems Business Department  
e-mail: [ids-sales@nri.co.jp](mailto:ids-sales@nri.co.jp)

---

## Contact:

Nomura Fiduciary Research & Consulting Co., Ltd.  
e-mail: [idx\\_mgr@nfrco.jp](mailto:idx_mgr@nfrco.jp)

---

---

1. Published data are all for reference only.

# Disclaimer

The intellectual property rights and any other rights in Russell/Nomura Japan Equity Index belong to Nomura Fiduciary Research & Consulting Co., Ltd. ("NFRC") and Frank Russell Company ("Russell"). NFRC and Russell do not guarantee accuracy, completeness, reliability, usefulness, marketability, merchantability and fitness of the Index, and do not account for business activities or services that any index user and/or its affiliates undertakes with the use of the Index.

Publication of the index could be delayed or canceled if a computer malfunction, natural disaster, or other unavoidable event affects the index calculation process.

Please read "About The Index License" before using the indexes, regardless of the channel through which indexes/data is acquired (NFRC website, services via information vendors, etc).

"About The Index License"

<http://qr.nomuraholdings.com/en/indexlicense.html>

- This material has been prepared by NFRC for information purposes only.
- All opinions and/or predictions contained in this material are based on the determination of NFRC at the time this material was prepared and are subject to change without notice. We do not provide any guarantee or assurance that opinions contained in this material relating to future predictions will actually take place. Some part of the content of this material is based on various information available to NFRC which NFRC determined to be reliable. However, NFRC does not guarantee the accuracy of such information, and there is a possibility that such information was summarized and imperfect. The past investment performance is not indicative of the future results.
- This material is not intended as an investment solicitation or an investment advice in connection with any particular security transaction.
- If a customer invests in an investment product that uses a market benchmark developed and provided by NFRC, a portion of the fees for the use of such benchmark may be directly or indirectly attributed to NFRC. For details, please visit the following website. Securities Market Benchmarks  
<http://qr.nomuraholdings.com/en/>
- This material may only be used by the customer to whom it was distributed. This material is the copyrighted work of NFRC and you may not copy, transmit or redistribute this material, in whole or in part, without the prior written consent of NFRC.

Nomura Fiduciary Research & Consulting Co., Ltd.

Registration Number: Director-General of the Kanto Local Financial Bureau (Finance & Commerce) Registration No.451

Membership: Japan Investment Advisers Association No. 011-00961