

## Russell/Nomura Japan Equity Indexes

EQUITY: INDEX SERVICES DEPARTMENT

### Performance summary

Research Analysts

[Japan index products](#)

Index Services Department - NFRC

idx\_mgr@nfrc.co.jp



Fig. 1: Russell/Nomura Japan Equity Indexes performance summary

As of end-February 2025

Total return (including dividends)

Index	No of stocks	Weight (%)	Index value	Returns (%) *				
				1 month	3 month	6 month	12 month	YTD
Total Market	1295	100.00	1182.48	-3.80	0.15	0.08	2.99	-3.60
Value	993	51.87	2818.42	-2.72	2.04	3.66	7.47	-2.41
Growth	654	48.13	439.65	-4.94	-1.82	-3.30	-1.15	-4.85
Large	250	84.55	1145.96	-3.96	0.16	-0.22	2.68	-3.69
Large Value	175	41.70	2657.35	-2.86	2.03	3.48	6.99	-2.51
Large Growth	156	42.85	467.14	-5.00	-1.60	-3.38	-0.95	-4.81
Top	50	51.48	971.23	-5.91	-1.60	-1.50	0.39	-5.85
Top Value	32	21.83	2631.50	-5.26	0.54	3.65	4.80	-5.11
Top Growth	39	29.65	411.31	-6.39	-3.11	-4.74	-2.43	-6.39
Mid	200	33.07	1502.46	-0.75	3.03	1.99	6.43	-0.12
Mid Value	143	19.87	2453.93	-0.08	3.73	3.60	9.55	0.51
Mid Growth	117	13.20	639.26	-1.74	1.98	-0.12	2.59	-1.05
Mid-Small	1245	48.52	1469.54	-1.46	2.07	1.85	5.88	-1.09
Mid-Small Value	961	30.04	2695.91	-0.79	3.17	3.76	9.51	-0.35
Mid-Small Growth	615	18.47	544.38	-2.53	0.33	-0.88	1.03	-2.27
Small	1045	15.45	1386.96	-2.94	0.08	1.82	4.80	-3.11
Small Value	818	10.17	2946.76	-2.14	2.08	4.30	9.61	-2.00
Small Growth	498	5.28	393.02	-4.45	-3.55	-2.47	-2.90	-5.19
Small Core	349	10.59	449.22	-3.29	-0.23	2.37	6.02	-3.42
Small Core Value	260	6.80	718.79	-2.57	1.70	4.50	9.98	-2.27
Small Core Growth	181	3.78	146.89	-4.56	-3.50	-1.02	0.15	-5.40
Micro	696	4.86	533.97	-2.18	0.74	0.81	2.55	-2.44
Micro Value	558	3.37	799.69	-1.27	2.85	4.10	9.14	-1.43
Micro Growth	317	1.49	146.33	-4.17	-3.69	-5.93	-9.73	-4.66
Prime	996	98.70	3320.06	-3.83	0.13	0.08	3.00	-3.62
Prime Value	752	50.92	4625.83	-2.75	2.02	3.68	7.45	-2.43
Prime Growth	524	47.79	2211.60	-4.95	-1.79	-3.27	-1.04	-4.85

Note: \* Returns are not annualized.

Source: Nomura Fiduciary Research & Consulting Co., Ltd. (NFRC)

For composition rules, please refer to Russell/Nomura Japan Equity Indexes rulebook.

**Fig. 2: Russell/Nomura Japan Equity Indexes performance summary**

As of end-February 2025

Price return (excluding dividends)

(Index)	No of stocks	Weight (%)	Index value	Returns (%) *				
				1 month	3 month	6 month	12 month	YTD
Total Market	1295	100.00	610.12	-3.83	-0.02	-1.05	0.67	-3.64
Value	993	51.87	1310.70	-2.75	1.87	2.15	4.39	-2.45
Growth	654	48.13	251.45	-4.97	-1.99	-4.09	-2.81	-4.89
Large	250	84.55	589.03	-3.98	0.01	-1.33	0.43	-3.71
Large Value	175	41.70	1224.81	-2.87	1.89	1.97	3.96	-2.53
Large Growth	156	42.85	265.20	-5.02	-1.75	-4.17	-2.59	-4.84
Top	50	51.48	483.86	-5.93	-1.68	-2.58	-1.75	-5.87
Top Value	32	21.83	1180.35	-5.28	0.49	2.12	1.84	-5.13
Top Growth	39	29.65	223.57	-6.40	-3.22	-5.55	-4.07	-6.41
Mid	200	33.07	804.09	-0.77	2.76	0.81	3.97	-0.15
Mid Value	143	19.87	1176.11	-0.09	3.47	2.10	6.41	0.48
Mid Growth	117	13.20	385.38	-1.78	1.71	-0.90	0.92	-1.09
Mid-Small	1245	48.52	781.51	-1.50	1.79	0.65	3.35	-1.15
Mid-Small Value	961	30.04	1295.95	-0.83	2.89	2.26	6.33	-0.41
Mid-Small Growth	615	18.47	328.09	-2.59	0.06	-1.67	-0.67	-2.33
Small	1045	15.45	724.87	-3.04	-0.21	0.58	2.10	-3.22
Small Value	818	10.17	1422.42	-2.24	1.78	2.79	6.32	-2.10
Small Growth	498	5.28	236.43	-4.55	-3.82	-3.29	-4.71	-5.30
Small Core	349	10.59	289.77	-3.37	-0.48	1.15	3.36	-3.50
Small Core Value	260	6.80	439.33	-2.65	1.43	3.00	6.73	-2.36
Small Core Growth	181	3.78	104.24	-4.64	-3.72	-1.86	-1.70	-5.48
Micro	696	4.86	336.43	-2.32	0.39	-0.47	-0.23	-2.60
Micro Value	558	3.37	475.22	-1.40	2.51	2.56	5.75	-1.58
Micro Growth	317	1.49	106.02	-4.33	-4.07	-6.72	-11.46	-4.84
Prime	996	98.70	2050.94	-3.85	-0.03	-1.05	0.70	-3.65
Prime Value	752	50.92	2625.60	-2.77	1.85	2.18	4.38	-2.47
Prime Growth	524	47.79	1482.49	-4.98	-1.96	-4.07	-2.70	-4.88

Note: \* Returns are not annualized.

Source: NFRC

**Fig. 3: Russell/Nomura Japan Equity Indexes performance summary**

As of end-February 2025

Total return (including dividends)

Index	No. of stocks	Weight (%)	Index value	Returns (%) *				
				1 month	3 months	6 months	12 months	YTD
Total Market	1295	100.00	1182.48	-3.80	0.15	0.08	2.99	-3.60
Value	993	51.87	2818.42	-2.72	2.04	3.66	7.47	-2.41
Growth	654	48.13	439.65	-4.94	-1.82	-3.30	-1.15	-4.85
Large	250	84.55	1145.96	-3.96	0.16	-0.22	2.68	-3.69
Large Value	175	41.70	2657.35	-2.86	2.03	3.48	6.99	-2.51
Large Growth	156	42.85	467.14	-5.00	-1.60	-3.38	-0.95	-4.81
Top	50	51.48	971.23	-5.91	-1.60	-1.50	0.39	-5.85
Top Value	32	21.83	2631.50	-5.26	0.54	3.65	4.80	-5.11
Top Growth	39	29.65	411.31	-6.39	-3.11	-4.74	-2.43	-6.39
Mid	200	33.07	1502.46	-0.75	3.03	1.99	6.43	-0.12
Mid Value	143	19.87	2453.93	-0.08	3.73	3.60	9.55	0.51
Mid Growth	117	13.20	639.26	-1.74	1.98	-0.12	2.59	-1.05
Mid-Small	1245	48.52	1469.54	-1.46	2.07	1.85	5.88	-1.09
Mid-Small Value	961	30.04	2695.91	-0.79	3.17	3.76	9.51	-0.35
Mid-Small Growth	615	18.47	544.38	-2.53	0.33	-0.88	1.03	-2.27
Small	1045	15.45	1386.96	-2.94	0.08	1.82	4.80	-3.11
Small Value	818	10.17	2946.76	-2.14	2.08	4.30	9.61	-2.00
Small Growth	498	5.28	393.02	-4.45	-3.55	-2.47	-2.90	-5.19
Small Core	349	10.59	449.22	-3.29	-0.23	2.37	6.02	-3.42
Small Core Value	260	6.80	718.79	-2.57	1.70	4.50	9.98	-2.27
Small Core Growth	181	3.78	146.89	-4.56	-3.50	-1.02	0.15	-5.40
Micro	696	4.86	533.97	-2.18	0.74	0.81	2.55	-2.44
Micro Value	558	3.37	799.69	-1.27	2.85	4.10	9.14	-1.43
Micro Growth	317	1.49	146.33	-4.17	-3.69	-5.93	-9.73	-4.66
Prime	996	98.70	3320.06	-3.83	0.13	0.08	3.00	-3.62
Prime Value	752	50.92	4625.83	-2.75	2.02	3.68	7.45	-2.43
Prime Growth	524	47.79	2211.60	-4.95	-1.79	-3.27	-1.04	-4.85

Note: \* Returns are not annualized.

Source: NFRC

**Fig. 4: Russell/Nomura index data by industrial sector**

As of end-February 2025

Number of stocks and weighting

Index	Total Market		Value		Growth		Small		Prime	
	No of stocks	Weight (%)	No of stocks	Weight (%)	No of stocks	Weight (%)	No of stocks	Weight (%)	No of stocks	Weight (%)
Overall	1295	100.00	993	100.00	654	100.00	1045	100.00	996	100.00
Fishery, agriculture & forestry	5	0.08	5	0.15	0	0.00	5	0.49	4	0.07
Mining	5	0.29	5	0.55	1	0.01	4	0.27	3	0.28
Construction	61	2.21	57	3.82	26	0.46	54	5.31	45	2.16
Foods	54	2.99	47	2.47	26	3.56	44	5.11	41	2.98
Textiles and apparel	17	0.40	16	0.70	5	0.07	16	1.32	13	0.38
Pulp and paper	7	0.14	7	0.27	0	0.00	7	0.92	6	0.14
Chemicals	96	5.13	82	4.41	42	5.91	77	7.52	75	5.11
Pharmaceuticals	33	4.22	26	3.03	24	5.50	22	2.05	29	4.26
Oil and coal products	4	0.55	4	1.06	0	0.00	1	0.04	4	0.56
Rubber products	10	0.64	10	1.23	1	0.00	9	1.15	9	0.64
Glass and ceramics products	22	0.67	20	0.95	9	0.36	18	2.02	17	0.65
Iron & steel	20	0.86	20	1.66	0	0.00	17	1.15	10	0.82
Nonferrous metals	16	0.86	14	1.19	4	0.51	13	1.82	15	0.87
Metal products	20	0.48	19	0.63	7	0.32	17	1.45	14	0.46
Machinery	93	5.42	79	3.66	45	7.31	79	7.83	69	5.38
Electric appliances	110	18.99	86	7.04	70	31.87	77	7.84	91	19.16
Transportation equipment	39	6.17	38	11.24	3	0.70	26	2.16	34	6.22
Precision equipments	24	2.27	15	0.39	17	4.30	18	1.74	20	2.29
Other products	30	3.16	21	0.95	20	5.54	24	1.98	26	3.19
Electricity and gas	21	1.23	20	2.36	2	0.01	14	1.51	17	1.23
Land transportation	35	2.25	32	3.81	13	0.58	22	3.44	33	2.27
Marine transportation	5	0.83	5	1.61	0	0.00	2	0.10	5	0.84
Airlines	2	0.34	2	0.62	1	0.05	0	0.00	2	0.35
Warehousing & harbor transportation services	7	0.14	7	0.25	1	0.01	7	0.89	5	0.13
Information and communications	112	8.07	37	5.79	96	10.53	92	8.51	81	8.05
Wholesale trade	94	6.22	86	8.58	40	3.67	83	6.06	63	6.16
Retail trade	118	4.19	66	2.32	83	6.21	105	9.51	86	4.11
Banks	64	9.09	63	17.32	3	0.21	52	6.37	52	9.14
Securities & commodity futures	18	0.94	15	1.71	8	0.10	15	0.93	11	0.92
Insurance	8	3.40	8	3.95	4	2.80	2	0.13	8	3.44
Other financing business	19	1.19	16	1.76	5	0.58	15	1.58	17	1.20
Real estate	39	1.86	29	2.85	23	0.78	32	2.96	26	1.82
Services	87	4.72	36	1.64	75	8.05	76	5.83	65	4.70

Source: NFRC

**Fig. 5: Russell/Nomura index data by industrial sector**

As of end-February 2025

Monthly return\*

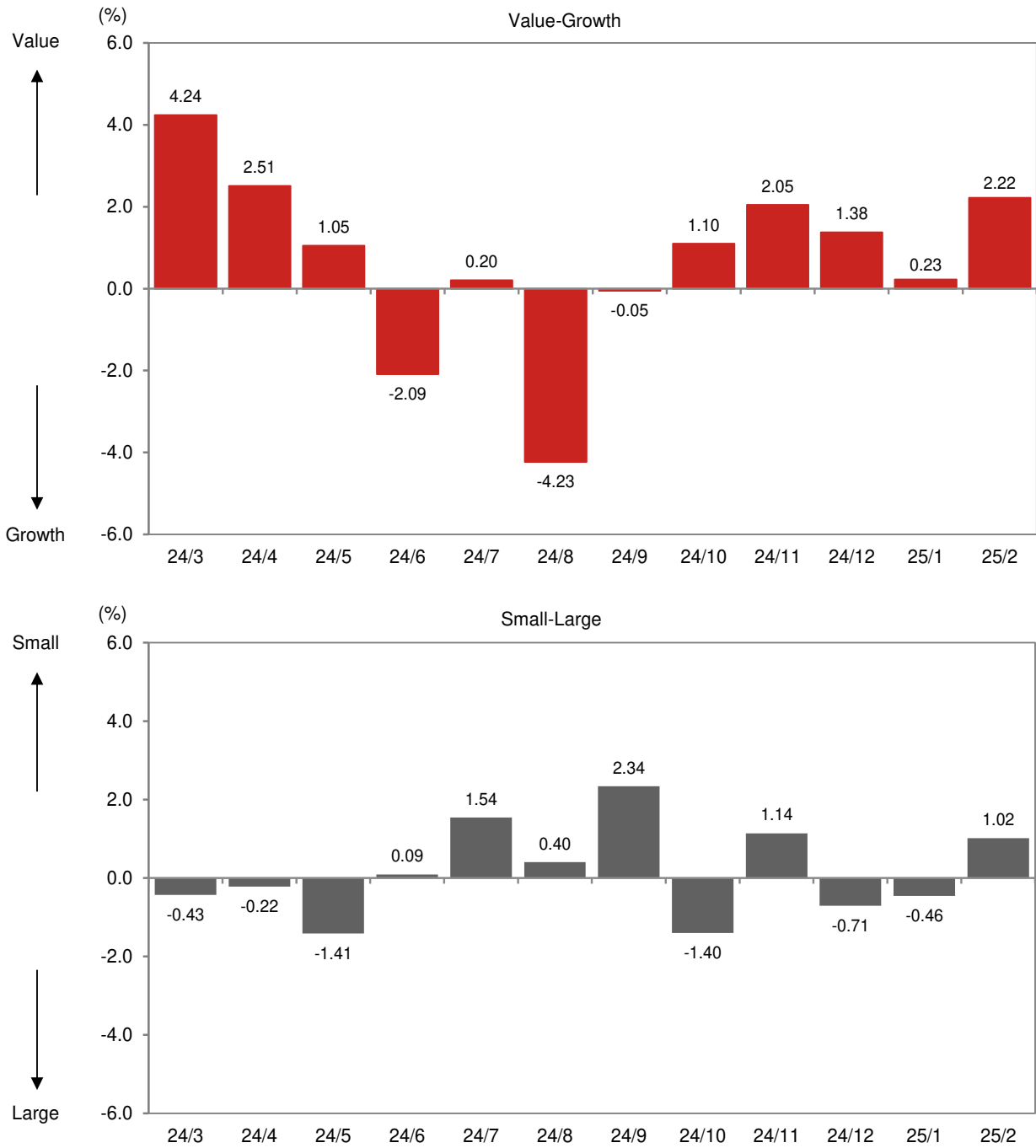
Index	Total Market		Value		Growth		Small		Prime	
	excl dividends	incl dividends	excl dividends	incl dividends	excl dividends	incl dividends	excl dividends	incl dividends	excl dividends	incl dividends
Total	-3.83	-3.80	-2.75	-2.72	-4.97	-4.94	-3.04	-2.94	-3.85	-3.83
Fishery, agriculture & forestry	-0.28	-0.28	-0.28	-0.28	-	-	-0.28	-0.28	-0.28	-0.28
Mining	2.30	2.30	2.41	2.41	-8.16	-8.16	4.37	4.37	2.55	2.55
Construction	-1.27	-1.27	-0.81	-0.81	-5.22	-5.22	-2.41	-2.40	-1.19	-1.19
Foods	-2.44	-2.42	0.80	0.85	-4.74	-4.73	-3.30	-3.27	-2.40	-2.37
Textiles & apparel	-5.92	-5.63	-5.49	-5.16	-10.23	-10.23	-4.11	-3.52	-6.13	-5.86
Pulp & paper	-3.26	-3.26	-3.26	-3.26	-	-	-3.26	-3.26	-3.45	-3.45
Chemicals	-3.74	-3.76	-4.14	-4.15	-3.41	-3.44	-2.43	-2.42	-3.74	-3.76
Pharmaceuticals	-5.36	-5.35	-0.66	-0.64	-7.94	-7.94	-1.60	-1.51	-5.38	-5.38
Oil & coal products	-0.14	-0.14	-0.14	-0.14	-	-	-7.10	-7.10	-0.14	-0.14
Rubber products	1.95	1.98	1.96	1.98	-3.05	-3.05	-4.03	-3.93	1.95	1.98
Glass & ceramic products	-4.42	-4.41	-3.28	-3.27	-7.56	-7.56	-3.74	-3.72	-4.60	-4.59
Iron & steel	3.73	3.73	3.73	3.73	-	-	3.51	3.52	3.74	3.74
Nonferrous metals	-7.26	-7.26	-8.23	-8.23	-4.70	-4.70	-7.54	-7.54	-7.27	-7.27
Metal products	-2.32	-2.30	-3.12	-3.10	-0.56	-0.56	-3.48	-3.45	-2.48	-2.48
Machinery	-7.89	-7.84	-4.45	-4.39	-9.64	-9.61	-3.65	-3.52	-8.02	-7.97
Electric appliances	-3.63	-3.62	-0.15	-0.14	-4.42	-4.42	-4.85	-4.83	-3.63	-3.63
Transportation equipment	-6.59	-6.59	-6.72	-6.72	-4.26	-4.26	-4.39	-4.39	-6.61	-6.61
Precision equipment	-12.65	-12.64	-6.87	-6.80	-13.18	-13.17	-6.34	-6.23	-12.68	-12.67
Other products	7.07	7.07	-1.24	-1.24	8.77	8.77	-5.02	-5.01	7.09	7.09
Electric power & gas	2.16	2.16	2.18	2.18	-5.68	-5.68	0.50	0.50	2.22	2.22
Land transportation	1.40	1.40	1.80	1.80	-1.31	-1.31	-0.05	-0.05	1.37	1.37
Marine transportation	7.20	7.20	7.20	7.20	-	-	-4.83	-4.83	7.20	7.20
Air transportation	-0.75	-0.75	-0.64	-0.64	-2.21	-2.21	-	-	-0.75	-0.75
Warehousing & harbor transportation services	-1.85	-1.85	-1.99	-1.99	1.04	1.04	-1.85	-1.85	-1.52	-1.52
Information & communication	-2.09	-2.08	-6.47	-6.47	0.69	0.72	-3.00	-2.97	-2.08	-2.07
Wholesale trade	-3.81	-3.80	-3.18	-3.17	-5.36	-5.35	-3.61	-3.52	-3.83	-3.82
Retail trade	-7.08	-6.68	-7.97	-7.29	-6.72	-6.43	-2.87	-2.41	-7.23	-6.82
Banks	-2.91	-2.90	-2.97	-2.96	2.87	2.87	-2.61	-2.58	-2.90	-2.90
Securities & commodity futures	-5.05	-5.05	-5.08	-5.08	-4.63	-4.63	-3.26	-3.26	-5.36	-5.36
Insurance	1.44	1.44	0.92	0.92	2.24	2.24	-15.83	-15.83	1.44	1.44
Other financing business	-4.59	-4.56	-4.68	-4.63	-4.31	-4.31	-2.01	-1.85	-4.53	-4.50
Real estate	-3.74	-3.70	-3.50	-3.47	-4.64	-4.61	-0.70	-0.56	-3.78	-3.74
Services	-11.00	-10.96	-0.97	-0.95	-12.94	-12.90	-2.64	-2.45	-11.15	-11.11

Note: \* Returns are not annualized.

Source: NFRC

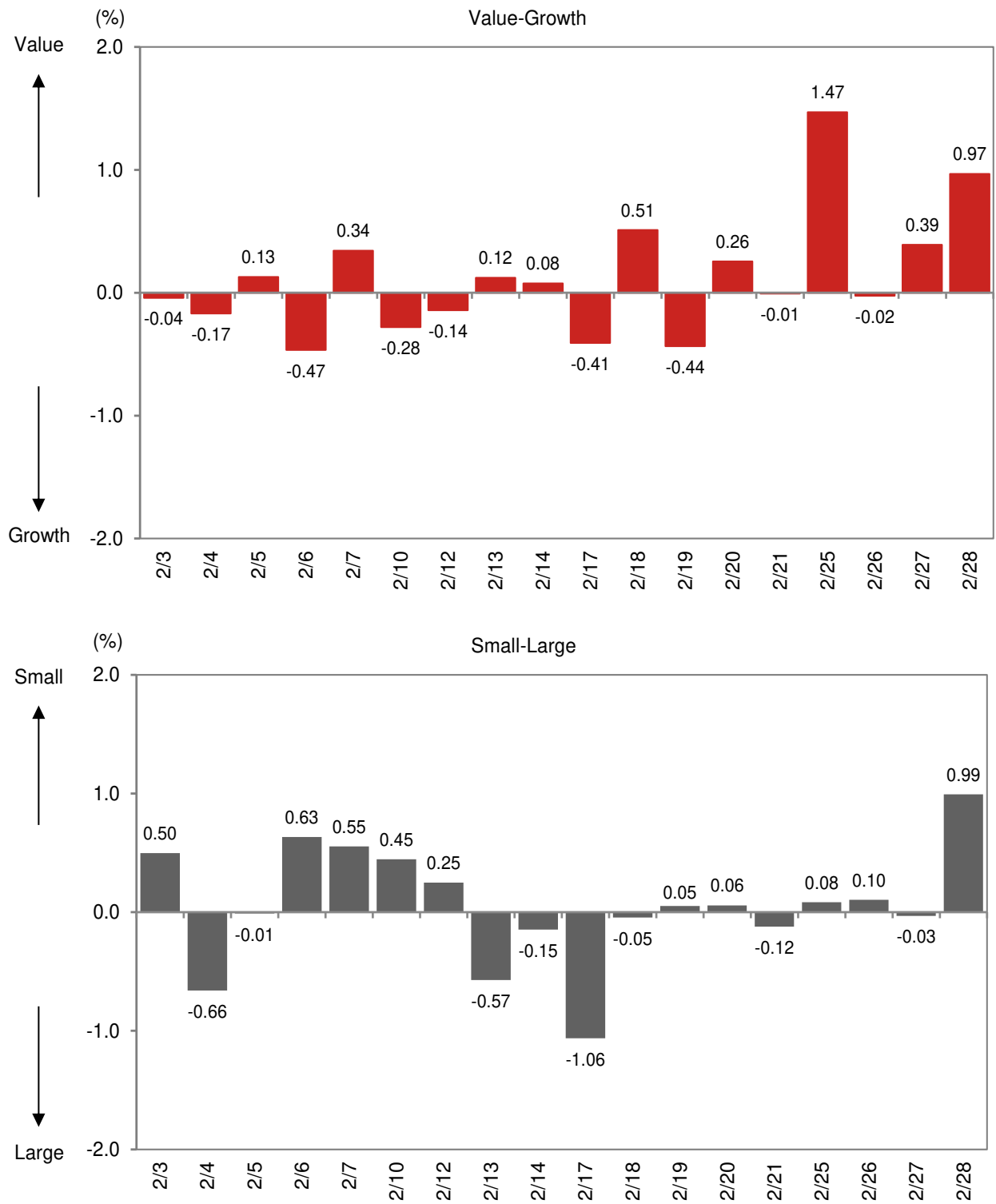
**Fig. 6: Monthly performance**

Total return



Note: Value-Growth is the difference between Value and Growth returns. Small-Large is the difference between Small and Large returns. Returns are not annualized.  
Source: NFRC

Fig. 7: Daily performance



Note: Value-Growth is the difference between Value and Growth returns. Small-Large is the difference between Small and Large returns. Returns are not annualized. Source: NFRC

**Fig. 8: Russell/Nomura Japan Equity Indexes key indicators**

As of end-February 2025

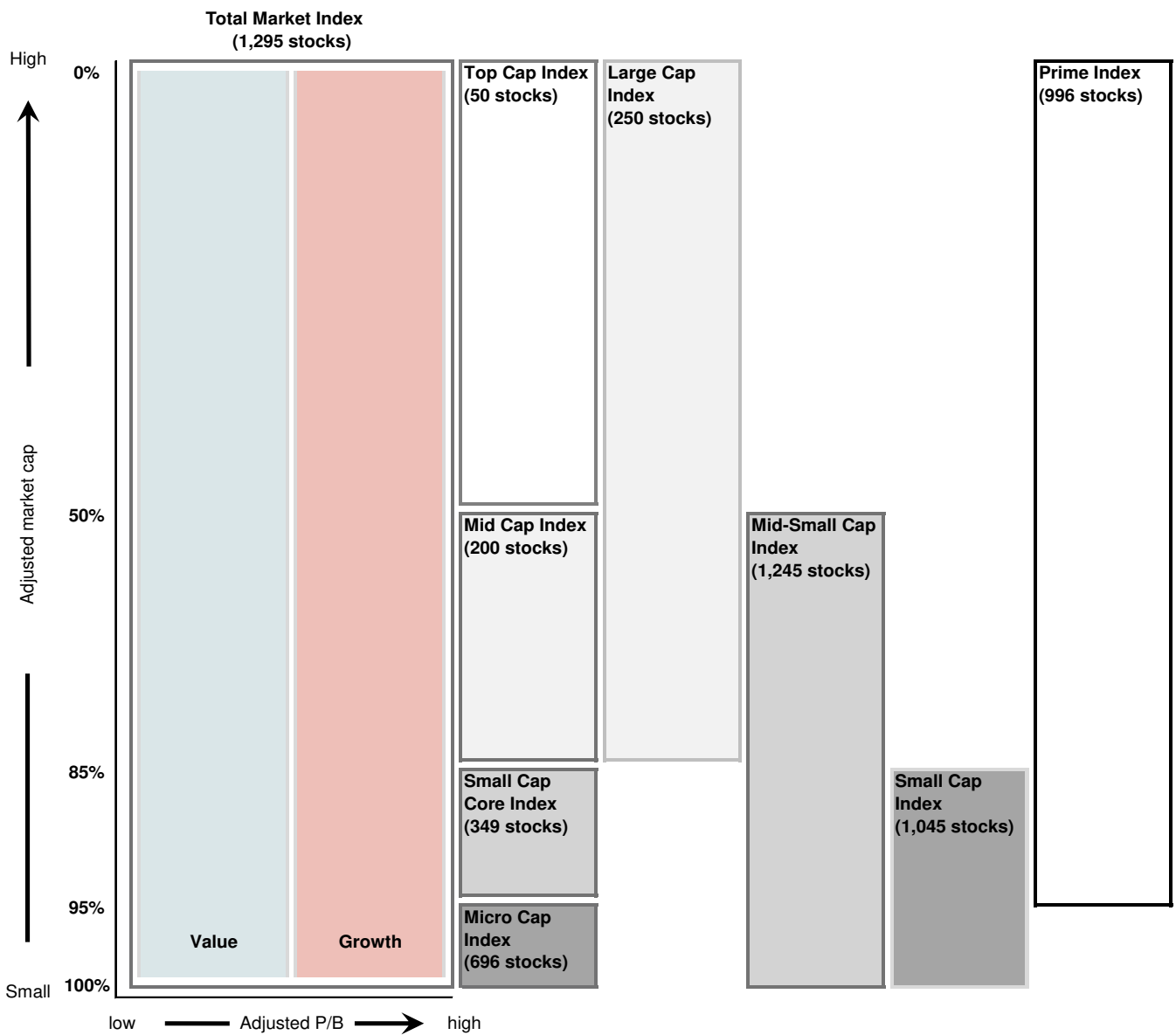
Index	P/E (x)	P/B (x)	Dividend yield (%)	ROE (%)	Rec profit growth (%)
Total Market	15.00	1.33	2.47	9.12	10.82
Value	11.59	0.90	3.19	8.02	8.08
Growth	21.95	2.66	1.69	12.65	16.95
Large	15.18	1.40	2.41	9.53	11.92
Large Value	11.39	0.94	3.19	8.46	9.45
Large Growth	22.45	2.71	1.65	12.58	17.12
Top	15.79	1.63	2.31	10.69	15.33
Top Value	11.27	1.03	3.22	9.49	15.42
Top Growth	22.41	2.82	1.64	13.15	15.18
Mid	14.33	1.15	2.57	8.26	7.68
Mid Value	11.54	0.85	3.15	7.54	3.73
Mid Growth	22.54	2.49	1.69	11.45	21.54
Mid-Small	14.25	1.11	2.64	7.99	6.99
Mid-Small Value	11.84	0.83	3.18	7.18	3.29
Mid-Small Growth	21.25	2.45	1.77	11.97	19.64
Small	14.07	1.03	2.80	7.49	5.55
Small Value	12.50	0.80	3.23	6.50	2.33
Small Growth	18.58	2.35	1.99	13.20	15.90
Small Core	14.73	1.08	2.71	7.50	4.09
Small Core Value	13.04	0.83	3.15	6.48	1.11
Small Core Growth	19.22	2.38	1.93	12.94	12.85
Micro	12.82	0.93	3.01	7.45	8.49
Micro Value	11.53	0.74	3.39	6.55	4.63
Micro Growth	17.13	2.26	2.15	13.82	23.48
Prime	15.04	1.34	2.46	9.17	10.93
Prime Value	11.60	0.91	3.19	8.07	8.19
Prime Growth	21.99	2.67	1.69	12.64	17.03

Note: All financial data are based on current-FY forecasts (with preference given to consolidated figures).

Source: NFRIC



**Fig. 9: Russell/Nomura Japan Equity Indexes**



No. of stocks in each index is as of end-February 2025

Source: NFRC

All the indexes (Total Market, the capitalization indexes, Value and Growth indexes, and Prime) also have indexes based on the 33 industrial sectors.

Divisions based on market cap exclude the value of stable shareholdings.

Value and Growth indexes are defined in terms of P/B ratios adjusted for unrealized gains/losses.

**Fig. 10: Russell/Nomura Japan Equity Indexes performance summary**

As of end-February 2025

Price return (excluding dividends), US dollar basis

(Index)	No of stocks	Weight (%)	Index value	Returns (%) *				
				1 month	3 month	6 month	12 month	YTD
Total Market	1295	100.00	972.93	-1.14	-0.32	-4.67	0.16	1.13
Value	993	51.87	2090.11	-0.03	1.56	-1.59	3.86	2.38
Growth	654	48.13	400.97	-2.31	-2.28	-7.60	-3.30	-0.18
Large	250	84.55	939.31	-1.28	-0.29	-4.94	-0.08	1.05
Large Value	175	41.70	1953.16	-0.15	1.58	-1.76	3.43	2.29
Large Growth	156	42.85	422.90	-2.36	-2.04	-7.68	-3.08	-0.12
Top	50	51.48	771.60	-3.29	-1.97	-6.14	-2.25	-1.21
Top Value	32	21.83	1882.25	-2.63	0.19	-1.62	1.32	-0.43
Top Growth	39	29.65	356.52	-3.78	-3.51	-9.00	-4.56	-1.78
Mid	200	33.07	1282.25	2.01	2.45	-2.88	3.44	4.79
Mid Value	143	19.87	1875.48	2.71	3.16	-1.63	5.86	5.46
Mid Growth	117	13.20	614.56	0.98	1.41	-4.53	0.40	3.81
Mid-Small	1245	48.52	1246.25	1.26	1.49	-3.03	2.83	3.75
Mid-Small Value	961	30.04	2066.60	1.95	2.58	-1.49	5.79	4.53
Mid-Small Growth	615	18.47	523.19	0.14	-0.24	-5.27	-1.18	2.50
Small	1045	15.45	1155.92	-0.32	-0.51	-3.10	1.58	1.58
Small Value	818	10.17	2268.26	0.50	1.48	-0.97	5.78	2.75
Small Growth	498	5.28	377.03	-1.87	-4.11	-6.83	-5.19	-0.61
Small Core	349	10.59	196.61	-0.66	-0.78	-2.56	2.84	1.28
Small Core Value	260	6.80	298.09	0.08	1.12	-0.76	6.19	2.48
Small Core Growth	181	3.78	70.73	-1.96	-4.01	-5.46	-2.20	-0.80
Micro	696	4.86	228.27	0.42	0.09	-4.11	-0.73	2.22
Micro Value	558	3.37	322.44	1.36	2.20	-1.19	5.21	3.30
Micro Growth	317	1.49	71.94	-1.65	-4.36	-10.14	-11.91	-0.13
Prime	996	98.70	1581.08	-1.16	-0.33	-4.67	0.19	1.12
Prime Value	752	50.92	2024.09	-0.05	1.54	-1.56	3.85	2.36
Prime Growth	524	47.79	1142.86	-2.32	-2.25	-7.58	-3.19	-0.17

Note: \* Returns are not annualized.

Source: NFRC

**Fig. 11: Russell/Nomura Japan Equity Indexes performance summary**

As of end-February 2025

Total return (including dividends), US dollar basis

Index	No of stocks	Weight (%)	Index value	Returns (%) *				
				1 month	3 month	6 month	12 month	YTD
Total Market	1295	100.00	1885.65	-1.11	-0.15	-3.59	2.47	1.17
Value	993	51.87	4494.42	0.00	1.74	-0.14	6.92	2.42
Growth	654	48.13	701.10	-2.28	-2.11	-6.84	-1.65	-0.14
Large	250	84.55	1827.42	-1.27	-0.14	-3.87	2.16	1.08
Large Value	175	41.70	4237.56	-0.14	1.73	-0.31	6.44	2.32
Large Growth	156	42.85	744.93	-2.34	-1.89	-6.92	-1.45	-0.10
Top	50	51.48	1548.78	-3.28	-1.89	-5.11	-0.12	-1.19
Top Value	32	21.83	4196.33	-2.61	0.24	-0.14	4.26	-0.41
Top Growth	39	29.65	655.90	-3.76	-3.40	-8.22	-2.93	-1.76
Mid	200	33.07	2395.91	2.03	2.72	-1.74	5.89	4.83
Mid Value	143	19.87	3913.18	2.72	3.42	-0.19	8.99	5.48
Mid Growth	117	13.20	1019.40	1.01	1.68	-3.77	2.07	3.85
Mid-Small	1245	48.52	2343.41	1.30	1.76	-1.88	5.34	3.80
Mid-Small Value	961	30.04	4299.05	1.99	2.86	-0.04	8.96	4.58
Mid-Small Growth	615	18.47	868.09	0.20	0.03	-4.50	0.52	2.57
Small	1045	15.45	2211.73	-0.22	-0.22	-1.90	4.27	1.69
Small Value	818	10.17	4699.07	0.60	1.78	0.48	9.05	2.86
Small Growth	498	5.28	626.73	-1.77	-3.84	-6.03	-3.39	-0.50
Small Core	349	10.59	304.80	-0.58	-0.52	-1.37	5.48	1.37
Small Core Value	260	6.80	487.71	0.16	1.40	0.68	9.42	2.57
Small Core Growth	181	3.78	99.66	-1.89	-3.79	-4.64	-0.36	-0.72
Micro	696	4.86	362.30	0.56	0.44	-2.88	2.03	2.39
Micro Value	558	3.37	542.60	1.50	2.54	0.29	8.58	3.45
Micro Growth	317	1.49	99.29	-1.48	-3.98	-9.37	-10.19	0.06
Prime	996	98.70	2559.45	-1.13	-0.16	-3.58	2.48	1.16
Prime Value	752	50.92	3566.08	-0.02	1.71	-0.11	6.90	2.40
Prime Growth	524	47.79	1704.94	-2.29	-2.09	-6.81	-1.54	-0.14

Note: \* Returns are not annualized.

Source: NFRC

# Data publication services

Data for the Russell/Nomura Japan Equity Indexes can be obtained via the following channels.<sup>[1]</sup>

---

## Index values are published in the following media:

- Bloomberg (RNJI)
- Jiji (RNSI/12400, RNSIIDV/12400)
- QUICK (NRIJ500–503, 510–517)
- Refinitiv (FRCNRI01, FRCNRI02, FRCNRI03, FRCNRI04, .JRNP, .JRNS)
- Website (<http://qr.nomuraholdings.com/en/frcnri/index.html> )

---

## More detailed data:

More detailed data on index values and individual stock information can be obtained through Nomura Research Institute services Aurora, e-Aurora, and IDS. For information, contact:

Nomura Research Institute

Investment Information Systems Business Department

e-mail: [ids-sales@nri.co.jp](mailto:ids-sales@nri.co.jp)

---

## Contact:

Nomura Fiduciary Research & Consulting Co., Ltd.

e-mail: [idx\\_mgr@nfrco.co.jp](mailto:idx_mgr@nfrco.co.jp)

---

1. Published data are all for reference only.

# Disclaimer

The intellectual property rights and any other rights in Russell/Nomura Japan Equity Index belong to Nomura Fiduciary Research & Consulting Co., Ltd. ("NFRC") and Frank Russell Company ("Russell"). NFRC and Russell do not guarantee accuracy, completeness, reliability, usefulness, marketability, merchantability and fitness of the Index, and do not account for business activities or services that any index user and/or its affiliates undertakes with the use of the Index.

Publication of the index could be delayed or canceled if a computer malfunction, natural disaster, or other unavoidable event affects the index calculation process.

Please read "About The Index License" before using the indexes, regardless of the channel through which indexes/data is acquired (NFRC website, services via information vendors, etc).

"About The Index License"

<http://qr.nomuraholdings.com/en/indexlicense.html>

- This material has been prepared by NFRC for information purposes only.
- All opinions and/or predictions contained in this material are based on the determination of NFRC at the time this material was prepared and are subject to change without notice. We do not provide any guarantee or assurance that opinions contained in this material relating to future predictions will actually take place. Some part of the content of this material is based on various information available to NFRC which NFRC determined to be reliable. However, NFRC does not guarantee the accuracy of such information, and there is a possibility that such information was summarized and imperfect. The past investment performance is not indicative of the future results.
- This material is not intended as an investment solicitation or an investment advice in connection with any particular security transaction.
- If a customer invests in an investment product that uses a market benchmark developed and provided by NFRC, a portion of the fees for the use of such benchmark may be directly or indirectly attributed to NFRC. For details, please visit the following website.  
Securities Market Benchmarks: <http://qr.nomuraholdings.com/en/>
- This material may only be used by the customer to whom it was distributed. This material is the copyrighted work of NFRC and you may not copy, transmit or redistribute this material, in whole or in part, without the prior written consent of NFRC.

Nomura Fiduciary Research & Consulting Co., Ltd.

Registration Number: Director-General of the Kanto Local Financial Bureau (Finance & Commerce) Registration No.451

Membership: Japan Investment Advisers Association No. 011-00961